



Kwun Tong

## PO LEUNG KUK LEE SHU FOOK KINDERGARTEN

Joining  
2023/24 KG Education SchemeAddress : SHOP 2, G/F, ON CHUNG HOUSE, AND SHOP 2 G/F AND  
1/F, COMMERCIAL BLOCK, 1 SHUN ON ESTATE,  
KWUN TONG, KOWLOON

School No. 604259

Location No. 0001

Tel. : 2386 6983

Fax. : 2386 4718

School Information	
School Category	Non-profit-making
Student Category	Co-educational
Name of School Supervisor	MS LAI WAI LIN
Name of School Principal	MS LAM PUI YEE
School Founding Year	2016
Total No. of Permitted Accommodation of Classrooms in Use (Data as of Sept. 2022)	364
Number of Registered Classrooms	14
Outdoor Playground	Yes
Indoor Playground	Yes
Music Room	Yes
Other Special Room(s) / Area(s)	a self-contained school building of 2 floors and 20,000 square feet. The school has 14 classrooms, outdoor playground under the skylight with a water and sand play area, a comfortable library, a multi-purpose music room, a visual-art room and different learning corners provide a safe and engaging learning environment for children.
Total No. of Principal & Teaching Staff (Data as of Sept. 2022) *	23
School Website	<a href="https://www.plkks.edu.hk/plklsfkg/en">https://www.plkks.edu.hk/plklsfkg/en</a>
Quality Review : Result and Report	Meeting the prescribed standards <a href="https://www.edb.gov.hk/attachment/tc/edu-system/preprimary-kindergarten/quality-assurance-frame-work/qv/qv-report/PLK_LeeShuFook.pdf">https://www.edb.gov.hk/attachment/tc/edu-system/preprimary-kindergarten/quality-assurance-frame-work/qv/qv-report/PLK_LeeShuFook.pdf</a>

No. & Qualification of Principal & Teaching Staff (Data as of Sept. 2022) *	
Academic Qualification	
Degree holders	19
Non-degree holders	4
Professional Qualification	
C(ECE) or above	23
Qualified KG teachers	0
Other teacher trainings	0
Qualified assistant KG teachers	0
Others	0

\* Excluding staff serving aged 0-2

Teacher to Pupil Ratio (Data as of Sept. 2022)	
Teacher to pupil ratio in morning session	1 : 11.7
Teacher to pupil ratio in afternoon session	1 : 8.5
Ratio includes classes aged 2-3	Yes

No. of Enrolment (Data as of Sept. 2022)				
	Nursery	Lower KG	Upper KG	Total
AM Session	37	32	41	110
PM Session	13	14	0	27
WD Session	40	62	49	151

Annual Fees (2023 / 24 School Year)				
		Nursery	Lower KG	Upper KG
Annual Fees After Deduction of Government Subsidy (No. of Instalment)	AM Session	\$1,860 (10)	\$1,860 (10)	\$1,860 (10)
	PM Session	\$1,860 (10)	\$1,860 (10)	\$1,860 (10)
	WD Session	\$13,850 (10)	\$13,850 (10)	\$13,850 (10)

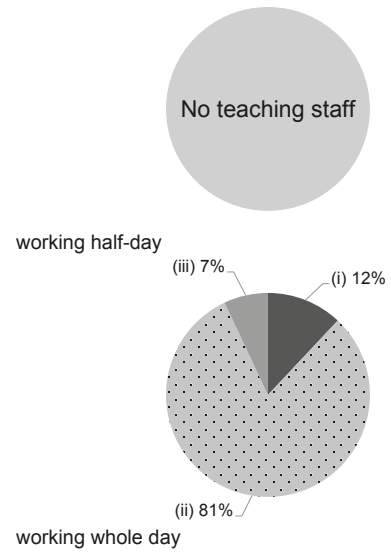
Please refer to the Fees Certificate for details of fees information.

Child Care Services (Data as of Sept. 2022)			
With child care services for children aged 2-3	Yes	With child care services for children aged under 2	No
Fee level (per annum)	\$47,960 (half - day)	No. of enrolment aged 2-3	7
	- (full - day)	Joining Child Care Centre Subsidy Scheme	No
Providing occasional child care services	No	Providing extended hours services	No

Curriculum Details	
Curriculum type : Local	
Curriculum planning	
<p>Our teaching team at this school holds various professional qualifications. The administrative and teaching teams are committed to implementing the human-centered approach and incorporating innovative elements into the curriculum and instruction methods in order to provide a unique learning experience.</p> <p>We will follow the "Kindergarten Education Curriculum Guide" (2017) to plan curriculum. Children of nursery classes will not be asked to write, and there will not be mechanical copying exercises and drills on calculation.</p>	
Learning / Teaching approach & activities	
<p>- We have rich learning environment both in / outdoors, allowing children to explore and opportunities to develop and learn in a safe and secure environment. - Offer a English language-rich environment and fun-activities to develop language and communication skills. - Our Positive / Moral Education cultivate a positive attitude towards life</p>	
Assessment of children's learning experiences	
<p>- Portfolio (Observation Report, Art &amp; Craft Evaluation, Checklist) - Development Report (End of school year)</p>	

Monthly salary range of principal & teaching staff (Data as of Mar. 2023)

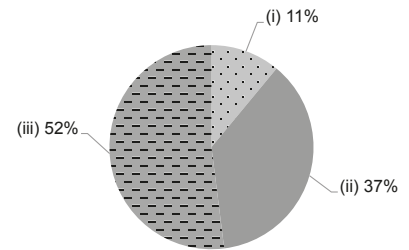
- (i) ≤ \$30,000
- (ii) \$30,001 - \$40,000
- (iii) > \$40,000



School Characteristics	
School vision and mission	
Upholding the PLK values, we cultivates child the good virtues and life skills in their future social life.	
Support to students	
<p>- Our primary one transition arrangement including getting to know PLK, Non-Chinese speaking &amp; Direct Subsidy Scheme primary Schools, school visits, experiential activities, and lesson preparation.</p>	
Support to non-Chinese speaking (NCS) students	
<p>Received Grant for Support to NCS Students; appoint additional teaching staff / teaching assistants to support NCS students learning Chinese; arrange interpretation / translation services; engage NCS parent volunteers to enhance communication between school and parents; create an enriched language environment for mastery of the Chinese language; create an inclusive learning environment to facilitate students' integration; - A rich language environment, systematic program, and learning materials are provided to cater to their learning needs. It helps to raise the incentive of social integration and learning interests for the Non-Chinese speaking students.</p>	
Support to students with special needs	
<p>Joining the On-site Pre-school Rehabilitation Services. - The school provides on-campus social work services, offering individual case counselling, referrals, personal and group training, and activities for students and parents.</p>	
Link with parents	
Parent-teacher association : Yes	
Other activities / communication with parents	
<p>Our school strives to maintain regular communication with parent such as face-to-face meetings, notices, handbooks, phone calls, and social media. Additionally, we regularly organize parent-teacher observations, parent days, parent lectures, parent workshops, and parent-child activities. Furthermore, our school has a Parent-Teacher Group.</p>	

Working experience of principal & teaching staff in pre-primary education (Data as of Mar. 2023)

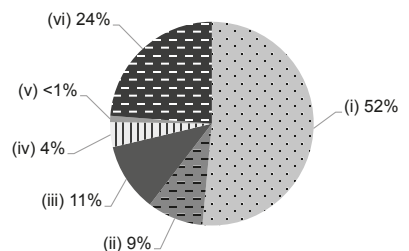
- (i) < 4 years
- (ii) 4 - 7 years
- (iii) > 7 years



2021/22 School Expenditure Information

Expenditure information based on audited account Yes

- (i) salary of principal & teaching staff
- (ii) non-teaching staff salary
- (iii) rent, management fees, rates & government rent
- (iv) teaching resources
- (v) staff training & professional development
- (vi) other expenses



Price of Major School Items (2022 / 23 School Year)			
Summer uniform	\$365 / set	Winter uniform	\$745 / set
School bag	\$57 / each	Tea and snacks	\$1,000 / year
Textbooks	\$700 / year	Exercise books/ workbooks	\$120 / year
Stationery	\$7 / year	Bedding items	No such item