



GLORIA CREATIVE KINDERGARTEN (SHEUNG SHUI)

North

Address : UNIT 23 & 24, G/F, COMMERCIAL COMPLEX
TSUI LAI GARDEN, 9 FUNG NAM ROAD,
SHEUNG SHUI, NEW TERRITORIES

Tel. : 2669 7009

Fax. : 2669 7993

Joining
2023/24 KG Education Scheme

School No. 597295

Location No. 0001

School Information	
School Category	Non-profit-making
Student Category	Co-educational
Name of School Supervisor	MR CHAN YUT WAH
Name of School Principal	MS LAM YUK PING
School Founding Year	2014
Total No. of Permitted Accommodation of Classrooms in Use (Data as of Sept. 2022)	137
Number of Registered Classrooms	9
Outdoor Playground	No
Indoor Playground	Yes
Music Room	Yes
Other Special Room(s) / Area(s)	Library, Family Room, Multi-Intelligence Room
Total No. of Principal & Teaching Staff (Data as of Sept. 2022) *	18
School Website	http://www.gciedu.hk
Quality Review : Result and Report	Meeting the prescribed standards https://www.edb.gov.hk/attachment/tc/edu-system/preprimary-kindergarten/quality-assurance-frame-work/qr/qr-report/GloriaCreative_SS.pdf

No. & Qualification of Principal & Teaching Staff (Data as of Sept. 2022) *	
Academic Qualification	
Degree holders	11
Non-degree holders	7
Professional Qualification	
C(ECE) or above	18
Qualified KG teachers	0
Other teacher trainings	0
Qualified assistant KG teachers	0
Others	0

* Excluding staff serving aged 0-2

Teacher to Pupil Ratio (Data as of Sept. 2022)	
Teacher to pupil ratio in morning session	1 : 6.7
Teacher to pupil ratio in afternoon session	1 : 3.0
Ratio includes classes aged 2-3	Yes

No. of Enrolment (Data as of Sept. 2022)				
	Nursery	Lower KG	Upper KG	Total
AM Session	32	20	18	70
PM Session	0	0	0	0
WD Session	11	12	10	33

Annual Fees (2023 / 24 School Year)				
		Nursery	Lower KG	Upper KG
Annual Fees After Deduction of Government Subsidy (No. of Instalment)	AM Session	\$5,050 (10)	\$5,050 (10)	\$5,050 (10)
	PM Session	\$5,050 (10)	\$5,050 (10)	\$5,050 (10)
	WD Session	\$23,400 (10)	\$23,400 (10)	\$23,400 (10)

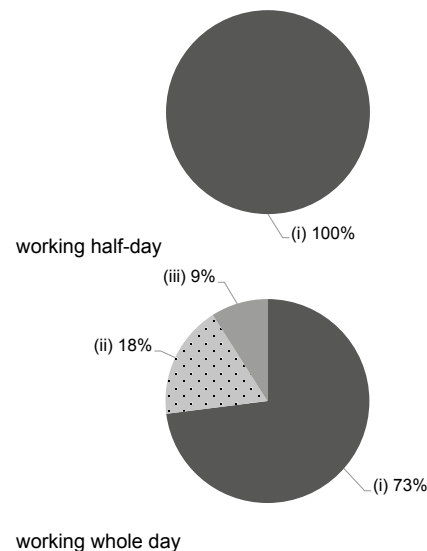
Please refer to the Fees Certificate for details of fees information.

Child Care Services (Data as of Sept. 2022)			
With child care services for children aged 2-3	Yes	With child care services for children aged under 2	No
Fee level (per annum)	\$44,330 (half - day)	No. of enrolment aged 2-3	18
	- (full - day)	Joining Child Care Centre Subsidy Scheme	No
Providing occasional child care services	No	Providing extended hours services	No

Curriculum Details	
Curriculum type : Local	
Curriculum planning	
Development based on child-centeredness. Biliteracy, trilingualism and life education. Children learn about the truth and cultivate positive attitudes and values through Bible.	
We will follow the "Kindergarten Education Curriculum Guide" (2017) to plan curriculum. Children of nursery classes will not be asked to write, and there will not be mechanical copying exercises and drills on calculation.	
Learning / Teaching approach & activities	
Aim to enrich student life experiences and develop multiple intelligences through Thematic teaching, Project studies, Drama, Off campus visits, introduction to IT and Independent exploration.	
Assessment of children's learning experiences	
Formative assessments of children's learning and their development situations are implemented through tools. A growth portfolio is created, to record their learning, physical and mental development progress.	

Monthly salary range of principal & teaching staff
(Data as of Mar. 2023)

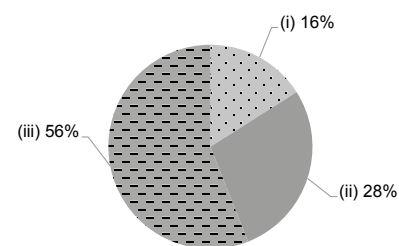
- (i) ≤ \$30,000
- (ii) \$30,001 - \$40,000
- (iii) > \$40,000



School Characteristics	
School vision and mission	
School motto, "Faith, Hope and Love". Mission: To train children in the way that they should go, hence when they are older, they will not depart from it. (Proverbs 22:6)	
Support to students	
Student support groups, book reading programs, new student-parent meetings, new student adaptation periods, Anchor Lamb, etc.	
Support to non-Chinese speaking (NCS) students	
Received Grant for Support to NCS Students; appoint additional teaching staff / teaching assistants to support NCS students learning Chinese; arrange interpretation / translation services; engage NCS parent volunteers to enhance communication between school and parents; create an enriched language environment for mastery of the Chinese language; create an inclusive learning environment to facilitate students' integration; collaborate with non-governmental organisations (NGOs) to create an inclusive learning environment; facilitate professional development for teachers to develop effective strategies to help NCS students learn Chinese; participate in school-based professional support programmes organised by EDB; The supporting team assists the children in need to learn effectively.	
Support to students with special needs	
Joining the On-site Pre-school Rehabilitation Services. Co-operate with The Hong Kong Society for the Deaf. They support the children who belong to the unit of SEN at school. The social worker and the volunteer counselor support the children who belong to the unit of SEN at school.	
Link with parents	
Parent-teacher association : No	
Other activities / communication with parents	
PC adaptation programs, PT interview days, Parent education talk, PC sport's day, Parents' religious classes, etc. Through these activities, we achieve an enriched education experience for the child.	

Working experience of principal & teaching staff
in pre-primary education
(Data as of Mar. 2023)

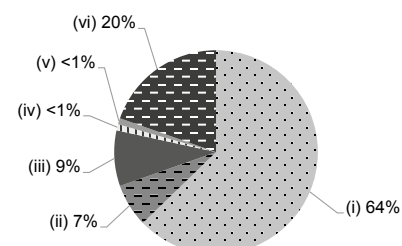
- (i) < 4 years
- (ii) 4 - 7 years
- (iii) > 7 years



2021/22 School Expenditure Information

Expenditure information based on audited account Yes

- (i) salary of principal & teaching staff
- (ii) non-teaching staff salary
- (iii) rent, management fees, rates & government rent
- (iv) teaching resources
- (v) staff training & professional development
- (vi) other expenses



Price of Major School Items (2022 / 23 School Year)			
Summer uniform	\$500 / set	Winter uniform	\$1,100 / set
School bag	\$190 / each	Tea and snacks	\$1,600 / year
Textbooks	\$2,300 / year	Exercise books/ workbooks	\$700 / year
Stationery	No such item	Bedding items	No such item