



# GLORIA CREATIVE KINDERGARTEN

North

Address : SHOP 72, 73, 75, 76, 77 & 79, G/F UNION PLAZA,  
WO MUK ROAD, FANLING, NEW TERRITORIES

Joining  
2023/24 KG Education Scheme

School No. 587869

Tel. : 2669 7339

Fax. : 2669 7229

Location No. 0001

School Information	
School Category	Non-profit-making
Student Category	Co-educational
Name of School Supervisor	MR CHAN YUT WAH
Name of School Principal	MS LAM YUK PING
School Founding Year	2011
Total No. of Permitted Accommodation of Classrooms in Use (Data as of Sept. 2022)	88
Number of Registered Classrooms	4
Outdoor Playground	No
Indoor Playground	Yes
Music Room	Yes
Other Special Room(s) / Area(s)	Library, iPad Room, Family Room, Multi-Intelligence Room
Total No. of Principal & Teaching Staff (Data as of Sept. 2022) *	11
School Website	<a href="http://www.gciedu.hk">http://www.gciedu.hk</a>
Quality Review : Result and Report	Meeting the prescribed standards <a href="https://www.edb.gov.hk/attachment/tc/edu-system/preprimary-kindergarten/quality-assurance-frame-work/qr/qr-report/GloriaCreative.pdf">https://www.edb.gov.hk/attachment/tc/edu-system/preprimary-kindergarten/quality-assurance-frame-work/qr/qr-report/GloriaCreative.pdf</a>

No. & Qualification of Principal & Teaching Staff (Data as of Sept. 2022) *	
Academic Qualification	
Degree holders	7
Non-degree holders	4
Professional Qualification	
C(ECE) or above	11
Qualified KG teachers	0
Other teacher trainings	0
Qualified assistant KG teachers	0
Others	0

\* Excluding staff serving aged 0-2

Teacher to Pupil Ratio (Data as of Sept. 2022)	
Teacher to pupil ratio in morning session	1 : 7.6
Teacher to pupil ratio in afternoon session	1 : 4.6
Ratio includes classes aged 2-3	Yes

No. of Enrolment (Data as of Sept. 2022)				
	Nursery	Lower KG	Upper KG	Total
AM Session	15	23	19	57
PM Session	0	0	0	0
WD Session	8	9	10	27

Annual Fees (2023 / 24 School Year)				
		Nursery	Lower KG	Upper KG
Annual Fees After Deduction of Government Subsidy (No. of Instalment)	AM Session	\$5,120 (10)	\$5,120 (10)	\$5,120 (10)
	PM Session	\$5,120 (10)	\$5,120 (10)	\$5,120 (10)
	WD Session	\$25,000 (10)	\$25,000 (10)	\$25,000 (10)

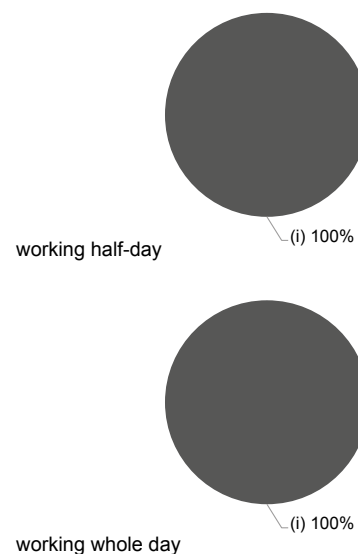
Please refer to the Fees Certificate for details of fees information.

Child Care Services (Data as of Sept. 2022)			
With child care services for children aged 2-3	Yes	With child care services for children aged under 2	No
Fee level (per annum)	\$46,310 (half - day)	No. of enrolment aged 2-3	10
	- (full - day)	Joining Child Care Centre Subsidy Scheme	No
Providing occasional child care services	No	Providing extended hours services	No

Curriculum Details	
Curriculum type : Local	
Curriculum planning	
<p>Development based on child-centeredness. We value biliteracy, trilingualism and life education. We use the Bible as a basis to let children learn about the truth and cultivate positive attitudes and values in the early years.</p> <p>We will follow the "Kindergarten Education Curriculum Guide" (2017) to plan curriculum. Children of nursery classes will not be asked to write, and there will not be mechanical copying exercises and drills on calculation.</p>	
Learning / Teaching approach & activities	
<p>We aim to enrich student life experiences and develop multiple intelligences through: Thematic teaching, Project studies, Drama, Off campus visits, Introduction to I.T. and Independent exploration</p>	
Assessment of children's learning experiences	
<p>Formative assessments of children's learning and their development situations are implemented through tools, A growth portfolio is created for each child, to record their learning, physical and mental development progress for each school year.</p>	

Monthly salary range of principal & teaching staff (Data as of Mar. 2023)

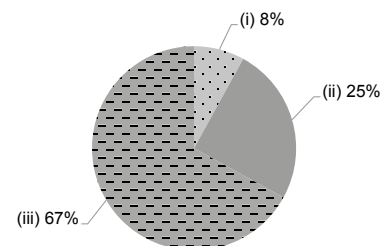
- (i) ≤ \$30,000
- (ii) \$30,001 - \$40,000
- (iii) > \$40,000



School Characteristics	
School vision and mission	
<p>Our school motto, "Faith, Hope and Love". Our mission: To train children in the way that they should go, hence when they are older, they will not depart from it. (Proverbs 22:6)</p>	
Support to students	
<p>Student support groups, include: book reading programs, new-student-parent meetings, new student adaptation periods, The Hong Kong Girl Guides Association "Happy Bee", etc.</p>	
Support to non-Chinese speaking (NCS) students	
<p>Received Grant for Support to NCS Students; appoint additional teaching staff / teaching assistants to support NCS students learning Chinese; arrange interpretation / translation services; engage NCS parent volunteers to enhance communication between school and parents; create an enriched language environment for mastery of the Chinese language; create an inclusive learning environment to facilitate students' integration; collaborate with non-governmental organisations (NGOs) to create an inclusive learning environment; facilitate professional development for teachers to develop effective strategies to help NCS students learn Chinese; participate in school-based professional support programmes organised by EDB; The supporting team assists the children in need to learn effectively.</p>	
Support to students with special needs	
<p>Joining the On-site Pre-school Rehabilitation Services. Co-operate with The Hong Kong Society for the Deaf. The social worker and the volunteer counselor support the children who belong to the unit of SEN at school.</p>	
Link with parents	
Parent-teacher association : No	
Other activities / communication with parents	
<p>Parent-child adaptation programs, Parent-teacher interview days, Parent education talk, Parent-child sport's day, Parents' religious classes, etc. Through these activities, we achieve an enriched education experience for the child.</p>	

Working experience of principal & teaching staff in pre-primary education (Data as of Mar. 2023)

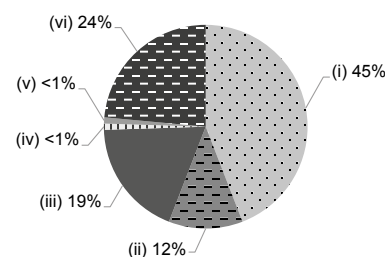
- (i) < 4 years
- (ii) 4 - 7 years
- (iii) > 7 years



2021/22 School Expenditure Information

Expenditure information based on audited account Yes

- (i) salary of principal & teaching staff
- (ii) non-teaching staff salary
- (iii) rent, management fees, rates & government rent
- (iv) teaching resources
- (v) staff training & professional development
- (vi) other expenses



Price of Major School Items (2022 / 23 School Year)			
Summer uniform	\$500 / set	Winter uniform	\$1,100 / set
School bag	\$190 / each	Tea and snacks	\$1,600 / year
Textbooks	\$2,300 / year	Exercise books/ workbooks	\$700 / year
Stationery	No such item	Bedding items	No such item