



CHRISTIAN LITTLE TREE KINDERGARTEN

Kwun Tong

Address : G/F, YING LOK HOUSE, CHOI YING ESTATE,
NGAU TAU KOK, KOWLOON

Joining
2023/24 KG Education Scheme

School No. 577987

Tel. : 3695 0118

Fax. : 3695 0119

Location No. 0001

School Information	
School Category	Non-profit-making
Student Category	Co-educational
Name of School Supervisor	MR LEUNG WAI MING
Name of School Principal	MS HUI PUI LING
School Founding Year	2009
Total No. of Permitted Accommodation of Classrooms in Use (Data as of Sept. 2022)	142
Number of Registered Classrooms	6
Outdoor Playground	No
Indoor Playground	Yes
Music Room	Yes
Other Special Room(s) / Area(s)	No
Total No. of Principal & Teaching Staff (Data as of Sept. 2022) *	10
School Website	http://www.littletree.edu.hk
Quality Review : Result and Report	Meeting the prescribed standards https://www.edb.gov.hk/attachment/tc/edu-system/preprimary-kindergarten/quality-assurance-frame-work/qr/qr-report/ChrLittleTree.pdf

No. & Qualification of Principal & Teaching Staff (Data as of Sept. 2022) *	
Academic Qualification	
Degree holders	8
Non-degree holders	2
Professional Qualification	
C(ECE) or above	9
Qualified KG teachers	1
Other teacher trainings	0
Qualified assistant KG teachers	0
Others	0

* Excluding staff serving aged 0-2

Teacher to Pupil Ratio (Data as of Sept. 2022)	
Teacher to pupil ratio in morning session	1 : 11.1
Teacher to pupil ratio in afternoon session	1 : 8.3
Ratio includes classes aged 2-3	No

No. of Enrolment (Data as of Sept. 2022)				
	Nursery	Lower KG	Upper KG	Total
AM Session	13	9	12	34
PM Session	0	0	0	0
WD Session	18	20	28	66

Annual Fees (2023 / 24 School Year)				
		Nursery	Lower KG	Upper KG
Annual Fees After Deduction of Government Subsidy (No. of Instalment)	AM Session	Free	Free	Free
	PM Session	Free	Free	Free
	WD Session	\$7,315 (11)	\$7,315 (11)	\$7,315 (11)

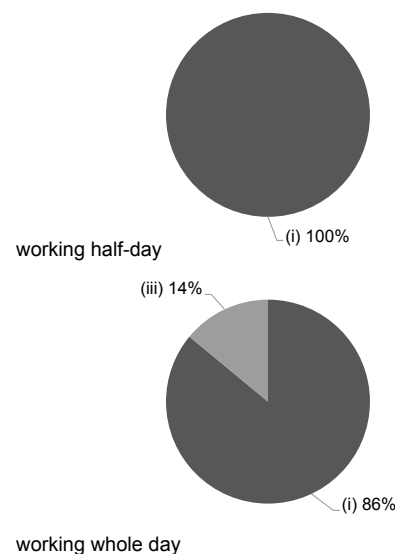
Please refer to the Fees Certificate for details of fees information.

Child Care Services (Data as of Sept. 2022)			
With child care services for children aged 2-3	-	With child care services for children aged under 2	-
Fee level (per annum)	(half - day)	No. of enrolment aged 2-3	0
	(full - day)	Joining Child Care Centre Subsidy Scheme	-
Providing occasional child care services	-	Providing extended hours services	-

Curriculum Details	
Curriculum type : Local	
Curriculum planning	
<p>The course is based on Agape of Christian and foster child-centredness and the whole-child development, as the core of learning to provide moral education courses for young children. According to catering for the growth and developmental needs of children, cooperate with children to whole-child development in a balanced manner in all aspects, and establish good moral development / ethics. This year's incorporate curriculums musical elements to enhance teachers' teaching skills and cultivate children's interest in music.</p> <p>We will follow the "Kindergarten Education Curriculum Guide" (2017) to plan curriculum. Children of nursery classes will not be asked to write, and there will not be mechanical copying exercises and drills on calculation.</p>	
Learning / Teaching approach & activities	
<p>Through continuous observation of children's daily learning performance, a "Children's portfolios" is established. According to each teaching theme, compile children's learning assessment content to continuously record children's learning effectiveness.</p>	
Assessment of children's learning experiences	
<p>Through the process of observation, record-keeping and analysis of children's daily learning performance, we help children to build up their own portfolios. We make use of the portfolios that can be reflect children's performance on learning and development.</p>	

Monthly salary range of principal & teaching staff
(Data as of Mar. 2023)

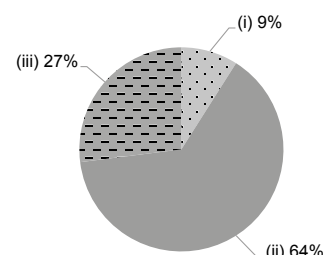
- (i) ≤ \$30,000
- (ii) \$30,001 - \$40,000
- (iii) > \$40,000



School Characteristics	
School vision and mission	
<p>Mission: To the establishment of love God love the quality of the Gospel campus 1. to the values Christian to cultivate future talent, contribute to the community 2. by making use of Parent and School Partnerships and other community resources to nurture children in morality, intellectual, physical, group, aesthetic, spiritual development</p>	
Support to students	
<p>Adaptation period for K1, simulation of Primary School activities, settle in social worker in school, joining the On-site Pre-school Rehabilitation Services.</p>	
Support to non-Chinese speaking (NCS) students	
<p>Received Grant for Support to NCS Students; appoint additional teaching staff / teaching assistants to support NCS students learning Chinese; arrange interpretation / translation services; create an enriched language environment for mastery of the Chinese language; create an inclusive learning environment to facilitate students' integration; participate in school-based professional support programmes organised by EDB.</p>	
Support to students with special needs	
<p>Joining the On-site Pre-school Rehabilitation Services.</p>	
Link with parents	
<p>Parent-teacher association : No</p>	
Other activities / communication with parents	
<p>Other activities / communication with parents: Kindergarten Activities: Parents Day, Course Briefing, Lecture, Festivals, Parents and Parents' Activities Parent education: Big shade parent academy, Seminars, Workshops, Parents support group Other activities: School Picnic, Sports day, Reading Program</p>	

Working experience of principal & teaching staff in pre-primary education
(Data as of Mar. 2023)

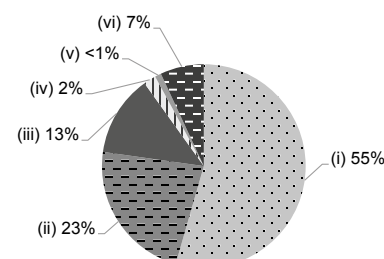
- (i) < 4 years
- (ii) 4 - 7 years
- (iii) > 7 years



2021/22 School Expenditure Information

Expenditure information based on audited account Yes

- (i) salary of principal & teaching staff
- (ii) non-teaching staff salary
- (iii) rent, management fees, rates & government rent
- (iv) teaching resources
- (v) staff training & professional development
- (vi) other expenses



Price of Major School Items (2022 / 23 School Year)			
Summer uniform	\$357 / set	Winter uniform	\$517 / set
School bag	\$85 / each	Tea and snacks	\$880 / year
Textbooks	\$942 / year	Exercise books/ workbooks	\$0 / year
Stationery	\$158-208 / year	Bedding items	No such item