



# CHINESE Y.M.C.A. SHEUNG SHUI KINDERGARTEN

North

Address : G/F, CHING YUN HOUSE, (BLOCK B) CHING HO ESTATE,  
SHEUNG SHUI, NEW TERRITORIES

Joining  
2023/24 KG Education Scheme

School No. 575429

Tel. : 2663 5196

Fax. : 2663 5197

Location No. 0001

School Information	
School Category	Non-profit-making
Student Category	Co-educational
Name of School Supervisor	MR NG KWAI WAH ANTHONY
Name of School Principal	MS HO WAI FONG DILYS
School Founding Year	2008
Total No. of Permitted Accommodation of Classrooms in Use (Data as of Sept. 2022)	156
Number of Registered Classrooms	6
Outdoor Playground	No
Indoor Playground	Yes
Music Room	No
Other Special Room(s) / Area(s)	Hall, Special activity room
Total No. of Principal & Teaching Staff (Data as of Sept. 2022) *	13
School Website	<a href="http://www.sscymca.edu.hk">http://www.sscymca.edu.hk</a>
Quality Review : Result and Report	Meeting the prescribed standards <a href="https://www.edb.gov.hk/attachment/tc/edu-system/preprimary-kindergarten/quality-assurance-frame-work/qr/qr-report/CYMCA_SS.pdf">https://www.edb.gov.hk/attachment/tc/edu-system/preprimary-kindergarten/quality-assurance-frame-work/qr/qr-report/CYMCA_SS.pdf</a>

No. & Qualification of Principal & Teaching Staff (Data as of Sept. 2022) *	
Academic Qualification	
Degree holders	13
Non-degree holders	0
Professional Qualification	
C(ECE) or above	13
Qualified KG teachers	0
Other teacher trainings	0
Qualified assistant KG teachers	0
Others	0

\* Excluding staff serving aged 0-2

Teacher to Pupil Ratio (Data as of Sept. 2022)	
Teacher to pupil ratio in morning session	1 : 11.0
Teacher to pupil ratio in afternoon session	1 : 8.2
Ratio includes classes aged 2-3	No

No. of Enrolment (Data as of Sept. 2022)				
	Nursery	Lower KG	Upper KG	Total
AM Session	21	25	23	69
PM Session	0	0	0	0
WD Session	20	32	22	74

Annual Fees (2023 / 24 School Year)				
		Nursery	Lower KG	Upper KG
Annual Fees After Deduction of Government Subsidy (No. of Instalment)	AM Session	Free	Free	Free
	PM Session	Free	Free	Free
	WD Session	\$8,536 (11)	\$8,536 (11)	\$8,536 (11)

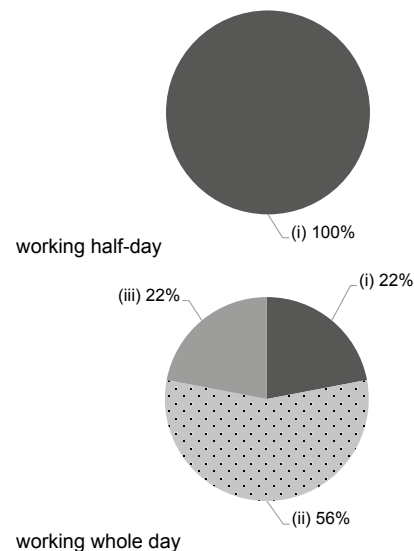
Please refer to the Fees Certificate for details of fees information.

Child Care Services (Data as of Sept. 2022)			
With child care services for children aged 2-3	-	With child care services for children aged under 2	-
Fee level (per annum)	(half - day)	No. of enrolment aged 2-3	0
	(full - day)	Joining Child Care Centre Subsidy Scheme	-
Providing occasional child care services	-	Providing extended hours services	-

Curriculum Details	
Curriculum type : Local	
Curriculum planning	
<p>The spiral theme-based curriculum is supported with specially designed activities and project-based approach for independent learning of children. Group activities are designed to guide children to plan, do and review so as to arouse their learning interest, develop self-confidence, self-discipline and problem-solving ability. Learning through play is also included in the group activities. Students are arranged to leave the classroom and carry out all-round learning experiences and activities as required by the themes learnt.</p> <p>We will follow the "Kindergarten Education Curriculum Guide" (2017) to plan curriculum. Children of nursery classes will not be asked to write, and there will not be mechanical copying exercises and drills on calculation.</p>	
Learning / Teaching approach & activities	
<p>Multiple intelligences are stimulated through theme-based approach, specially designed activities and learning through play and integrated activities. The development of language ability is emphasized. We basically teach with the mother tongue supported with interest activities to preliminarily expose children to Putonghua and English language.</p>	
Assessment of children's learning experiences	
<p>We assess children's performances and developments through ongoing observations. The areas of assessment include: "Moral Development", "Cognitive and Language Development", "Physical Development", "Affective and Social Development", and "Aesthetic Development"</p>	

Monthly salary range of principal & teaching staff  
(Data as of Mar. 2023)

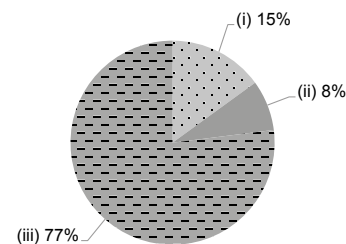
- (i) ≤ \$30,000
- (ii) \$30,001 - \$40,000
- (iii) > \$40,000



School Characteristics	
School vision and mission	
<p>The Chinese YMCA of Hong Kong children are guided to develop the 'Spirit', 'Mind' and 'Body'. Steadfast beliefs, accurate values and good living habits are fostered.</p>	
Support to students	
<p>'Parent-child adaptation week' is arranged for new students. Parents may accompany their children in class to help them adapt to campus life progressively. 'Kindergarten-primary interface' courses are arranged to transition to primary one. Individual students with special needs will be referred to professional counselling services.</p>	
Support to non-Chinese speaking (NCS) students	
<p>Received Grant for Support to NCS Students; appoint additional teaching staff / teaching assistants to support NCS students learning Chinese; arrange interpretation / translation services; create an enriched language environment for mastery of the Chinese language; create an inclusive learning environment to facilitate students' integration; facilitate professional development for teachers to develop effective strategies to help NCS students learn Chinese; participate in school-based professional support programmes organised by EDB.</p>	
Support to students with special needs	
<p>Joining the On-site Pre-school Rehabilitation Services.</p>	
Link with parents	
<p>Parent-teacher association : No</p>	
Other activities / communication with parents	
<p>Home-school communication is emphasized. 'Parents meetings' are organized for all grades in both semesters to introduce the curriculum; 'Parents day' and 'Lesson observations by parents' are held in the school year. Various parents' education courses, workshops and activities are organized jointly with our social worker every school year.</p>	

Working experience of principal & teaching staff in pre-primary education  
(Data as of Mar. 2023)

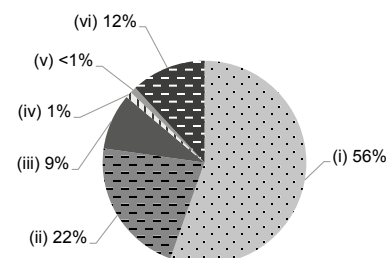
- (i) < 4 years
- (ii) 4 - 7 years
- (iii) > 7 years



2021/22 School Expenditure Information

Expenditure information based on audited account Yes

- (i) salary of principal & teaching staff
- (ii) non-teaching staff salary
- (iii) rent, management fees, rates & government rent
- (iv) teaching resources
- (v) staff training & professional development
- (vi) other expenses



Price of Major School Items (2022 / 23 School Year)			
Summer uniform	\$310-320 / set	Winter uniform	\$650-700 / set
School bag	\$92 / each	Tea and snacks	\$1,540 / year
Textbooks	\$100-200 / year	Exercise books/ workbooks	\$700-900 / year
Stationery	\$100-200 / year	Bedding items	No such item