



UNITED CHRISTIAN MEDICAL SERVICE NURSERY SCHOOL

Kwun Tong

Address : 1/F, BLOCK J (CHEN KOU BUN BUILDING), UNITED
CHRISTIAN HOSPITAL, 130 HIP WO STREET,
KWUN TONG, KOWLOON

Tel. : 2347 2286

Fax. : 2348 6740

Joining
2023/24 KG Education Scheme

School No. 566950

Location No. 0001

School Information	
School Category	Non-profit-making
Student Category	Co-educational
Name of School Supervisor	MS CHAK TUNG CHING
Name of School Principal	MS LAM HIU MAN
School Founding Year	1993
Total No. of Permitted Accommodation of Classrooms in Use (Data as of Sept. 2022)	52
Number of Registered Classrooms	2
Outdoor Playground	Yes
Indoor Playground	No
Music Room	No
Other Special Room(s) / Area(s)	Creative arts room
Total No. of Principal & Teaching Staff (Data as of Sept. 2022) *	7
School Website	http://ucmsns.hkcschild.edu.hk/
Quality Review : Result and Report	Meeting the prescribed standards https://www.edb.gov.hk/attachment/tc/edu-system/preprimary-kindergarten/quality-assurance-frame-work/qr/qr-report/UC_MedicalService.pdf

No. & Qualification of Principal & Teaching Staff (Data as of Sept. 2022) *	
Academic Qualification	
Degree holders	4
Non-degree holders	3
Professional Qualification	
C(ECE) or above	7
Qualified KG teachers	0
Other teacher trainings	0
Qualified assistant KG teachers	0
Others	0

* Excluding staff serving aged 0-2

Teacher to Pupil Ratio (Data as of Sept. 2022)	
Teacher to pupil ratio in morning session	1 : 8.1
Teacher to pupil ratio in afternoon session	1 : 8.1
Ratio includes classes aged 2-3	Yes

No. of Enrolment (Data as of Sept. 2022)				
	Nursery	Lower KG	Upper KG	Total
AM Session	0	0	0	0
PM Session	0	0	0	0
WD Session	20	15	15	50

Annual Fees (2023 / 24 School Year)				
		Nursery	Lower KG	Upper KG
Annual Fees After Deduction of Government Subsidy (No. of Instalment)	AM Session	-	-	-
	PM Session	-	-	-
	WD Session	\$26,604 (12)	\$26,604 (12)	\$26,604 (12)

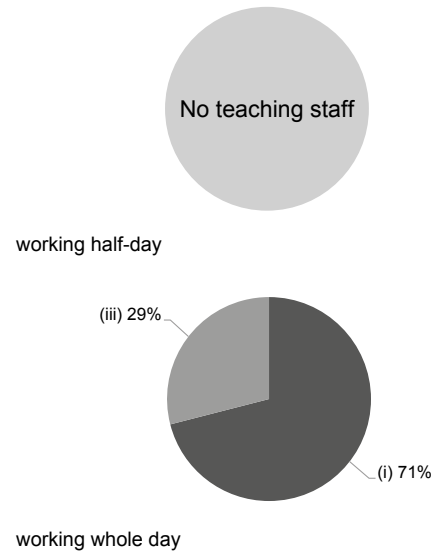
Please refer to the Fees Certificate for details of fees information.

Child Care Services (Data as of Sept. 2022)			
With child care services for children aged 2-3	Yes	With child care services for children aged under 2	No
Fee level (per annum)	(half - day)	No. of enrolment aged 2-3	7
	(\$82,992 full - day)	Joining Child Care Centre Subsidy Scheme	No
Providing occasional child care services	No	Providing extended hours services	No

Curriculum Details	
Curriculum type : Local	
Curriculum planning	
<p>Built on the theories and research on child development, and tailored to suit their physical and mental developmental needs and interests in learning, emphasizes the uniqueness and the need for comprehensive and balanced development in children.</p> <p>We will follow the "Kindergarten Education Curriculum Guide" (2017) to plan curriculum. Children of nursery classes will not be asked to write, and there will not be mechanical copying exercises and drills on calculation.</p>	
Learning / Teaching approach & activities	
<p>Curriculum is implemented by project learning and thematic instruction approach which puts the life experience and civic consciousness training at its centre in the form of daily news sharing; in addition, outings, expert visits, field trips and other family activities to suit teaching arrangements. We are attentive to the creative arts development in children, besides the daily afternoon cultural activities, we organise an annual Creative Arts Exhibition, Creative Drama Festival and joint-school children's choir; moreover, we promote all-round development through drama education. Also, we focus on environmental education that let students to personally experience green concepts through activities in order to develop positive values and attitudes.</p>	
Assessment of children's learning experiences	
<p>Daily observation and continuous assessment to understand their development progress in language, movement, cognition, emotion and sociability and arts.</p>	

Monthly salary range of principal & teaching staff
(Data as of Mar. 2023)

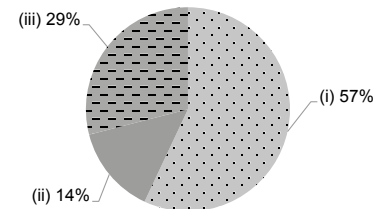
- (i) ≤ \$30,000
- (ii) \$30,001 - \$40,000
- (iii) > \$40,000



School Characteristics	
School vision and mission	
<p>Childhood is a unique and precious stage in the life cycle, we focus on providing children with a safe, healthy, rich and interactive environment for quality learning to promote children's balance intellectual, physical, emotional and social development, stimulating children's passion for learning, cultivating good habits for physical and mental balance in preparation of primary schooling. Through a rich variety of cultural activities, children can hone their artistic sentiment from an early age, we also assist working parents by taking care of and educate their children so they can focus on their work.</p>	
Support to students	
<p>School life adaptation for young children and adjustment plans for entering Primary, parents reading program and activities in cooperation with community agencies.</p>	
Support to non-Chinese speaking (NCS) students	
<p>Received Grant for Support to NCS Students; create an enriched language environment for mastery of the Chinese language; create an inclusive learning environment to facilitate students' integration; facilitate professional development for teachers to develop effective strategies to help NCS students learn Chinese; participate in school-based professional support programmes organised by EDB.</p>	
Support to students with special needs	
<p>Joining the On-site Pre-school Rehabilitation Services.</p>	
Link with parents	
Parent-teacher association : Yes	
Other activities / communication with parents	
<p>The "Children's Learning Activity Log" enables parents to monitor their children's learning and experiences; regularly organizes parent's day, classroom observation, family picnics, collaborative activities with volunteers, parents' fellowship and alumni association activities. School notices and news will be also announced through the school mobile apps.</p>	

Working experience of principal & teaching staff in pre-primary education
(Data as of Mar. 2023)

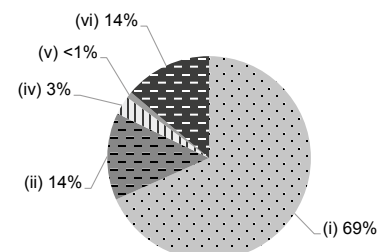
- (i) < 4 years
- (ii) 4 - 7 years
- (iii) > 7 years



2021/22 School Expenditure Information

Expenditure information based on audited account Yes

- (i) salary of principal & teaching staff
- (ii) non-teaching staff salary
- (iii) rent, management fees, rates & government rent
- (iv) teaching resources
- (v) staff training & professional development
- (vi) other expenses



Price of Major School Items (2022 / 23 School Year)			
Summer uniform	\$401-431 / set	Winter uniform	\$511-556 / set
School bag	\$88 / each	Tea and snacks	\$0 / year
Textbooks	\$174-230 / year	Exercise books/workbooks	\$21-223 / year
Stationery	\$24-65 / year	Bedding items	\$313 / set