



WAYFOONG NURSERY SCHOOL

Yau Tsim & Mong Kok

Address : UG/F, TOWER 3, HSBC CENTRE, 1 SHAM MONG ROAD,
TAI KOK TSUI, KOWLOON

Tel. : 2288 4922

Fax. : 2269 4528

Not Joining
2023/24 KG Education Scheme

School No. 566748

Location No. 0001

School Information	
School Category	Private Independent
Student Category	Co-educational
Name of School Supervisor	MS CHAK TUNG CHING
Name of School Principal	MS CHAN HOI MAN
School Founding Year	1990
Total No. of Permitted Accommodation of Classrooms in Use (Data as of Sept. 2022)	93
Number of Registered Classrooms	Not applicable
Outdoor Playground	No
Indoor Playground	Yes
Music Room	Yes
Other Special Room(s) / Area(s)	Multi-function room
Total No. of Principal & Teaching Staff (Data as of Sept. 2022) *	9
School Website	https://wfns.hkcschild.edu.hk/

No. & Qualification of Principal & Teaching Staff (Data as of Sept. 2022) *	
Academic Qualification	
Degree holders	7
Non-degree holders	2
Professional Qualification	
C(ECE) or above	9
Qualified KG teachers	0
Other teacher trainings	0
Qualified assistant KG teachers	0
Others	0

* Excluding staff serving aged 0-2

Teacher to Pupil Ratio (Data as of Sept. 2022)	
Teacher to pupil ratio in morning session	1 : 10.7
Teacher to pupil ratio in afternoon session	1 : 10.7
Ratio includes classes aged 2-3	Yes

No. of Enrolment (Data as of Sept. 2022)				
	Nursery	Lower KG	Upper KG	Total
AM Session	0	0	0	0
PM Session	0	0	0	0
WD Session	31	17	18	66

Annual Fees (2023 / 24 School Year)				
		Nursery	Lower KG	Upper KG
Annual Fees (No. of Instalment)	AM Session	-	-	-
	PM Session	-	-	-
	WD Session	\$46,680 (12)	\$46,680 (12)	\$46,680 (12)

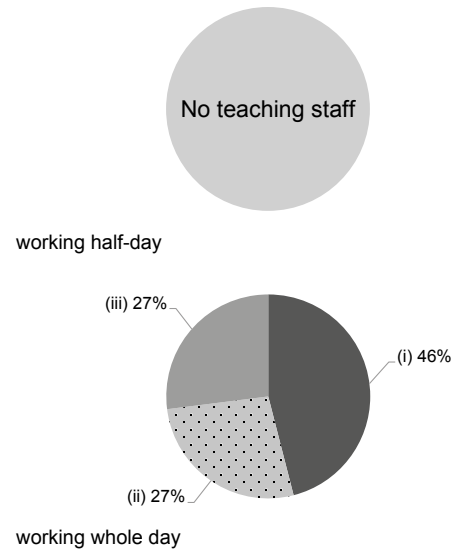
Please refer to the Fees Certificate for details of fees information.

Child Care Services (Data as of Sept. 2022)			
With child care services for children aged 2-3	Yes	With child care services for children aged under 2	No
Fee level (per annum)	(half - day)	No. of enrolment aged 2-3	30
	\$50,520 (full - day)	Joining Child Care Centre Subsidy Scheme	No
Providing occasional child care services	No	Providing extended hours services	No

Curriculum Details	
Curriculum type : Local	
Curriculum planning	
Based on child development theories and researches, we determine the curriculum according to children's physical and mental development needs and learning interests; pay attention to children's all-round and balanced development and uniqueness;	
Learning / Teaching approach & activities	
Our school adopts project approach and thematic approach in our curriculum. We focus much on cultivating children's life experiences and civic awareness, hence news sharing is one of our daily activities. We do organize visits, interviews with professionals, field trips, parent-child activities to align with our teaching contents. We value children's creativity and artistic development – despite literary and arts activities every afternoon, children's art exhibitions and creative drama shows are held annually. We also encourage children's learning through play-free play sessions are scheduled every day, with different constructive materials complementing the element of exploration. This will facilitate children's problem-solving skills, as they learn to discuss, express, they will demonstrate qualities of perseverance and acceptance. Children will learn to construct play environments, develop creativity and imagination, thus enhancing their intellectual, social, moral, emotional and physical development. Our school believes that, mathematics and natural sciences are indispensable scopes of early childhood education. STEM learning activities are gradually taking place in our school, to promote and strengthen children's spirit of exploration. Through a great variety of activities, children will establish an understanding towards the relationship between life and technology, creativity and problem-solving skills of children will as well be fostered.	
Assessment of children's learning experiences	
The school makes daily performance records and student assessment to track students' developments in cognition, physical ability, language, emotion, sociability and art.	

Monthly salary range of principal & teaching staff
(Data as of Mar. 2023)

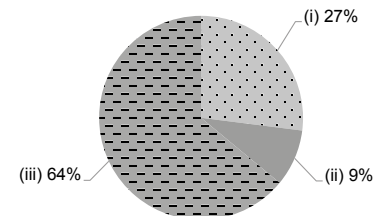
- (i) ≤ \$30,000
- (ii) \$30,001 - \$40,000
- (iii) > \$40,000



School Characteristics	
School vision and mission	
Childhood is a special and precious stage in our life cycle. We strive to provide a safe, healthy, rich and interactive study environment for children to promote their balanced development in intelligence, physical ability, language, emotion and social intercourse, inspire their interest in study, help them develop a good living habit, promote their physical and mental development, and get them prepared for further study. We arrange rich literary and artistic activities to develop children's aesthetic and artistic sentiment; we help parents who have to work out to take care of and educate their children. So the parents can work with peace of mind.	
Support to students	
Pupils and P.1 admission programmes, parent-child reading programme, and activities through cooperation with communities.	
Support to non-Chinese speaking (NCS) students	
Engage NCS parent volunteers to enhance communication between school and parents; create an inclusive learning environment to facilitate students' integration; collaborate with non-governmental organisations (NGOs) to create an inclusive learning environment.	
Support to students with special needs	
Joining the On-site Pre-school Rehabilitation Services.	
Link with parents	
Parent-teacher association : Yes	
Other activities / communication with parents	
"Children's Learning and Activity Log" allows parents to know their children's school life and experience every day; we regularly organize parents' day events, parents' meetings, parent-child trips, parent & volunteers collaborative activities and alumni activities.	

Working experience of principal & teaching staff in pre-primary education
(Data as of Mar. 2023)

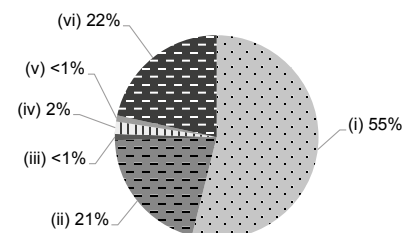
- (i) < 4 years
- (ii) 4 - 7 years
- (iii) > 7 years



2021/22 School Expenditure Information

Expenditure information based on audited account Yes

- (i) salary of principal & teaching staff
- (ii) non-teaching staff salary
- (iii) rent, management fees, rates & government rent
- (iv) teaching resources
- (v) staff training & professional development
- (vi) other expenses



Price of Major School Items (2022 / 23 School Year)

Summer uniform	\$400-430 / set	Winter uniform	\$521-566 / set
School bag	\$88 / each	Tea and snacks	\$0 / year
Textbooks	\$174-230 / year	Exercise books/ workbooks	\$32-223 / year
Stationery	\$24-67 / year	Bedding items	\$313 / set