



# THE NEIGHBOURHOOD ADVICE-ACTION COUNCIL TUNG CHUNG DAY NURSERY

Islands

Address : 1/F, CARPARK 2, YAT TUNG ESTATE, TUNG CHUNG,  
LANTAU ISLAND, HONG KONG

Joining  
2023/24 KG Education Scheme

School No. 566381

Location No. 0001

Tel. : 3152 2202

Fax. : 3152 2960

School Information	
School Category	Non-profit-making
Student Category	Co-educational
Name of School Supervisor	MS WONG MEI FUNG
Name of School Principal	MS YU WING YEE SAMANTHA
School Founding Year	2001
Total No. of Permitted Accommodation of Classrooms in Use (Data as of Sept. 2022)	98
Number of Registered Classrooms	Not applicable
Outdoor Playground	No
Indoor Playground	Yes
Music Room	Yes
Other Special Room(s) / Area(s)	No English Information
Total No. of Principal & Teaching Staff (Data as of Sept. 2022) *	10
School Website	<a href="http://www.naac.edu.hk/tcdn">http://www.naac.edu.hk/tcdn</a>
Quality Review : Result and Report	Meeting the prescribed standards <a href="https://www.edb.gov.hk/attachment/tc/edu-system/preprimary-kindergarten/quality-assurance-frame-work/qr/qr-report/NAAC_TungChung.pdf">https://www.edb.gov.hk/attachment/tc/edu-system/preprimary-kindergarten/quality-assurance-frame-work/qr/qr-report/NAAC_TungChung.pdf</a>

No. & Qualification of Principal & Teaching Staff (Data as of Sept. 2022) *	
Academic Qualification	
Degree holders	8
Non-degree holders	2
Professional Qualification	
C(ECE) or above	10
Qualified KG teachers	0
Other teacher trainings	0
Qualified assistant KG teachers	0
Others	0

\* Excluding staff serving aged 0-2

Teacher to Pupil Ratio (Data as of Sept. 2022)	
Teacher to pupil ratio in morning session	1 : 9.3
Teacher to pupil ratio in afternoon session	1 : 9.3
Ratio includes classes aged 2-3	Yes

No. of Enrolment (Data as of Sept. 2022)				
	Nursery	Lower KG	Upper KG	Total
AM Session	0	0	0	0
PM Session	0	0	0	0
WD Session	18	26	32	76

Annual Fees (2023 / 24 School Year)				
		Nursery	Lower KG	Upper KG
Annual Fees After Deduction of Government Subsidy (No. of Instalment)	AM Session	-	-	-
	PM Session	-	-	-
	WD Session	\$8,820 (12)	\$8,820 (12)	\$8,820 (12)

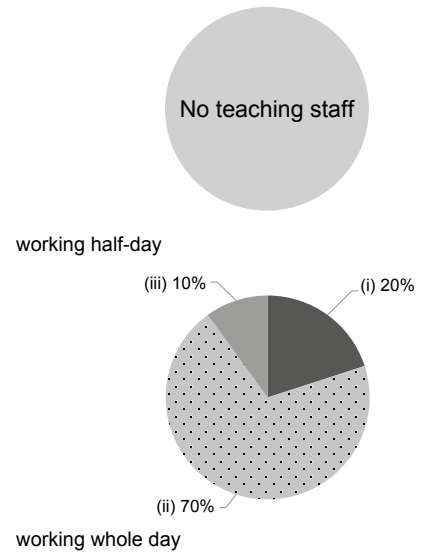
Please refer to the Fees Certificate for details of fees information.

Child Care Services (Data as of Sept. 2022)			
With child care services for children aged 2-3	Yes	With child care services for children aged under 2	No
Fee level (per annum)	(half - day)	No. of enrolment aged 2-3	17
	\$45,288 (full - day)	Joining Child Care Centre Subsidy Scheme	Yes
Providing occasional child care services	Yes	Providing extended hours services	Yes

Curriculum Details	
Curriculum type : Local	
Curriculum planning	
<p>Our curriculum cover six learning areas: Language (Chinese and English), Early Childhood Mathematics, Nature and Living (natural science and senses), Art and Creativity (music, movement and art work), Physical Fitness and Health ( body and health knowledge), Self and Society (moral education, self-reliance training and emotion education) through stories telling and games strategies. Nurture positive attitudes and values, foster children's all-round development.</p> <p>We will follow the "Kindergarten Education Curriculum Guide" (2017) to plan curriculum. Children of nursery classes will not be asked to write, and there will not be mechanical copying exercises and drills on calculation.</p>	
Learning / Teaching approach & activities	
<p>We adopt the thematic activity approach for teaching and exploit various teaching materials, so that children could learn from play according to children's cognitive development and physical development. Classroom learning is carried out through small groups with story telling and games strategies, cultivate children's learning interests and ability.</p>	
Assessment of children's learning experiences	
<p>We utilize the combination of continuous observation with summative assessment to integral children's development.</p>	

Monthly salary range of principal & teaching staff  
(Data as of Mar. 2023)

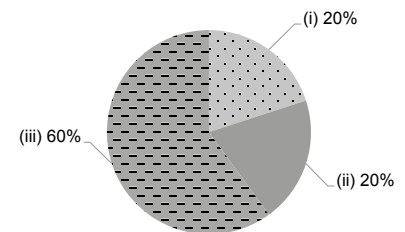
- (i) ≤ \$30,000
- (ii) \$30,001 - \$40,000
- (iii) > \$40,000



School Characteristics	
School vision and mission	
<p>We adopt child-centredness as our core value, and uphold the essential principle of understanding and respecting the unique developmental patterns of every child. Promoting comprehensive and balanced development to foster children's five domains of ethics, intellect, physique, social skills and aesthetics respectively, cultivating children's creativity, critical thinking and problem-solving skills.nurture children's all-round development.</p>	
Support to students	
<p>We value family education. We promote family education through our professional team (social workers and clinical psychologists), so that children could grow healthily and happily in warm and harmonious families.</p>	
Support to non-Chinese speaking (NCS) students	
<p>Received Grant for Support to NCS Students; appoint additional teaching staff / teaching assistants to support NCS students learning Chinese; arrange interpretation / translation services; engage NCS parent volunteers to enhance communication between school and parents; create an inclusive learning environment to facilitate students' integration; collaborate with non-governmental organisations (NGOs) to create an inclusive learning environment; facilitate professional development for teachers to develop effective strategies to help NCS students learn Chinese.</p>	
Support to students with special needs	
<p>Joining the On-site Pre-school Rehabilitation Services. Integrated Programme in Kindergarten-cum-Child Care Centre</p>	
Link with parents	
<p>Parent-teacher association : No</p>	
Other activities / communication with parents	
<p>Through parent meetings and talks, ensure parents and school understand children's development and meet their learning needs. We arrange activities like visits and outings to enhance parent-child relationship and home-school collaboration.</p>	

Working experience of principal & teaching staff in pre-primary education  
(Data as of Mar. 2023)

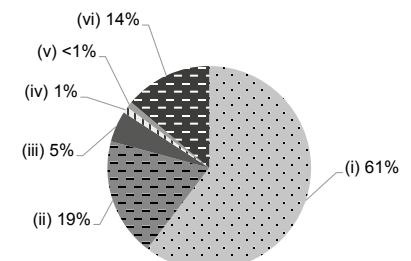
- (i) < 4 years
- (ii) 4 - 7 years
- (iii) > 7 years



2021/22 School Expenditure Information

Expenditure information based on audited account Yes

- (i) salary of principal & teaching staff
- (ii) non-teaching staff salary
- (iii) rent, management fees, rates & government rent
- (iv) teaching resources
- (v) staff training & professional development
- (vi) other expenses



Price of Major School Items (2022 / 23 School Year)			
Summer uniform	\$105 / set	Winter uniform	\$125 / set
School bag	\$96 / each	Tea and snacks	\$0 / year
Textbooks	\$500-600 / year	Exercise books/ workbooks	\$0 / year
Stationery	\$0 / year	Bedding items	No such item