



CASTAR KINDERGARTEN (LEI MUK SHUE)

Tsuen Wan

Address : G/F, CHUI SHUE HOUSE, LEI MUK SHUE ESTATE,
KWAI CHUNG, NEW TERRITORIES

Joining
2023/24 KG Education Scheme

School No. 565628

Tel. : 3446 9178

Fax. : 3446 9179

Location No. 0001

School Information	
School Category	Non-profit-making
Student Category	Co-educational
Name of School Supervisor	MADAM CHAN PUI MAN
Name of School Principal	MS NG SHUI CHUN
School Founding Year	2005
Total No. of Permitted Accommodation of Classrooms in Use (Data as of Sept. 2022)	155
Number of Registered Classrooms	6
Outdoor Playground	No
Indoor Playground	Yes
Music Room	Yes
Other Special Room(s) / Area(s)	Climbing wall, LEGO wall, STEM wall, Scientific Exploration Corner, Toy Library, Diversified Activity Room, Outdoor garden plot
Total No. of Principal & Teaching Staff (Data as of Sept. 2022) *	17
School Website	http://www.castar.edu.hk
Quality Review : Result and Report	Meeting the prescribed standards https://www.edb.gov.hk/attachment/tc/edu-system/preprimary-kindergarten/quality-assurance-frame-work/qr/qr-report/Castar_LMS.pdf

No. & Qualification of Principal & Teaching Staff (Data as of Sept. 2022) *	
Academic Qualification	
Degree holders	12
Non-degree holders	5
Professional Qualification	
C(ECE) or above	16
Qualified KG teachers	0
Other teacher trainings	0
Qualified assistant KG teachers	0
Others	1

* Excluding staff serving aged 0-2

Teacher to Pupil Ratio (Data as of Sept. 2022)	
Teacher to pupil ratio in morning session	1 : 8.8
Teacher to pupil ratio in afternoon session	1 : 11.0
Ratio includes classes aged 2-3	No

No. of Enrolment (Data as of Sept. 2022)				
	Nursery	Lower KG	Upper KG	Total
AM Session	12	14	24	50
PM Session	0	0	0	0
WD Session	35	30	34	99

Annual Fees (2023 / 24 School Year)				
		Nursery	Lower KG	Upper KG
Annual Fees After Deduction of Government Subsidy (No. of Instalment)	AM Session	Free	Free	Free
	PM Session	Free	Free	Free
	WD Session	\$152 (11)	\$152 (11)	\$152 (11)

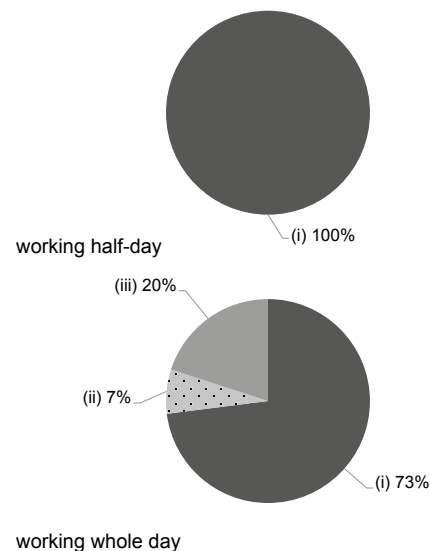
Please refer to the Fees Certificate for details of fees information.

Child Care Services (Data as of Sept. 2022)			
With child care services for children aged 2-3	-	With child care services for children aged under 2	-
Fee level (per annum)	(half - day)	No. of enrolment aged 2-3	0
	(full - day)	Joining Child Care Centre Subsidy Scheme	-
Providing occasional child care services	-	Providing extended hours services	-

Curriculum Details	
Curriculum type : Local	
Curriculum planning	
<p>Based on the structure of "experience-based learning, curiosity-based exploration and care-based growth", we design diversified activities such as site visiting, stem activities, DIY cooking, drama education and e-learning. These activities are based on the Guide of the Pre-primary Curriculum which enables children to carry out meaningful learning through observation, operation, thinking and application. The goal is to obtain different categories of knowledge and experience and develop multiple intelligences in an all-round way.</p> <p>We will follow the "Kindergarten Education Curriculum Guide" (2017) to plan curriculum. Children of nursery classes will not be asked to write, and there will not be mechanical copying exercises and drills on calculation.</p>	
Learning / Teaching approach & activities	
<p>We mainly adopt "theme-based" and "project-based" teaching modes. We have implemented "experience-based" and "mixed age" learning modes including small group learning, free play and extension activities to let children acquire knowledge and different learning experience through personal practice and practical involvement and promote peer leading and mutual simulation through cross-age interaction. The English courses are taught by native English teachers. We have adopted an English week. It is an interactive English Program that to enhance their English skills and to increase their confidence in using English.</p>	
Assessment of children's learning experiences	
<p>Set up a Children's Study Portfolio based on on-going observation to evaluate children's development in all aspects. Child development report will be delivered to parents at the end of each terms. Enable parents to understand the children's learning progress and needs. We will refine the curriculum, adjust the learning content according to children learning performance.</p>	

Monthly salary range of principal & teaching staff
(Data as of Mar. 2023)

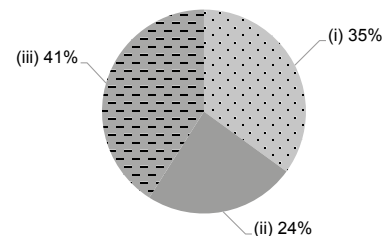
- (i) ≤ \$30,000
- (ii) \$30,001 - \$40,000
- (iii) > \$40,000



School Characteristics	
School vision and mission	
<p>Taking cultivation of children as our responsibility, we based on children's potentials and development characteristics, provide children with care and experience necessary for learning to arouse children's learning interest; meanwhile, we also help them gain balanced development in morality, intelligence, physical ability, sociability and art to get them prepared for future life so that they will grow into initiative and responsible citizens based on lifelong learning.</p>	
Support to students	
Orientation day, new students adaption week, P.1 mock activities, visits to primary school, interest class	
Support to non-Chinese speaking (NCS) students	
<p>Received Grant for Support to NCS Students; appoint additional teaching staff / teaching assistants to support NCS students learning Chinese; arrange interpretation / translation services; engage NCS parent volunteers to enhance communication between school and parents; create an enriched language environment for mastery of the Chinese language; create an inclusive learning environment to facilitate students' integration; facilitate professional development for teachers to develop effective strategies to help NCS students learn Chinese.</p>	
Support to students with special needs	
Joining the On-site Pre-school Rehabilitation Services.	
Link with parents	
Parent-teacher association : No	
Other activities / communication with parents	
Home-school gathering group, parent class observation, Parent-child Sports Day, parent-child trips, parents' meetings, parent interest classes and parent education seminars	

Working experience of principal & teaching staff in pre-primary education
(Data as of Mar. 2023)

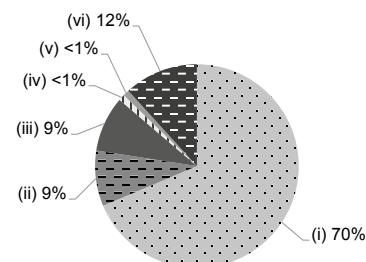
- (i) < 4 years
- (ii) 4 - 7 years
- (iii) > 7 years



2021/22 School Expenditure Information

Expenditure information based on audited account Yes

- (i) salary of principal & teaching staff
- (ii) non-teaching staff salary
- (iii) rent, management fees, rates & government rent
- (iv) teaching resources
- (v) staff training & professional development
- (vi) other expenses



Price of Major School Items (2022 / 23 School Year)			
Summer uniform	\$252 / set	Winter uniform	\$302 / set
School bag	\$109 / each	Tea and snacks	No such item
Textbooks	\$1,060 / year	Exercise books/ workbooks	\$918 / year
Stationery	No such item	Bedding items	No such item