



# GARDEN ESTATE BAPTIST NURSERY SCHOOL

Kwun Tong

Address : LOTUS TOWER 2, 2/F, ROOM 37 GARDEN ESTATE,  
297 NGAU TAU KOK ROAD, KWUN TONG, KOWLOON

Joining  
2023/24 KG Education Scheme

School No. 565369

Tel. : 2345 4340

Fax. : 2345 2713

Location No. 0001

School Information	
School Category	Non-profit-making
Student Category	Co-educational
Name of School Supervisor	MS POON MEI YU
Name of School Principal	MS KWOK YUK CHING CHERAIN
School Founding Year	1991
Total No. of Permitted Accommodation of Classrooms in Use (Data as of Sept. 2022)	91
Number of Registered Classrooms	Not applicable
Outdoor Playground	Yes
Indoor Playground	Yes
Music Room	Yes
Other Special Room(s) / Area(s)	Climbing Area
Total No. of Principal & Teaching Staff (Data as of Sept. 2022) *	12
School Website	<a href="http://www.gebns.edu.hk">http://www.gebns.edu.hk</a>
Quality Review : Result and Report	Meeting the prescribed standards <a href="https://www.edb.gov.hk/attachment/en/edu-system/preprimary-kindergarten/quality-assurance-frame-work/qr/qr-report/GardenEstBaptist.pdf">https://www.edb.gov.hk/attachment/en/edu-system/preprimary-kindergarten/quality-assurance-frame-work/qr/qr-report/GardenEstBaptist.pdf</a>

No. & Qualification of Principal & Teaching Staff (Data as of Sept. 2022) *	
Academic Qualification	
Degree holders	7
Non-degree holders	5
Professional Qualification	
C(ECE) or above	12
Qualified KG teachers	0
Other teacher trainings	0
Qualified assistant KG teachers	0
Others	0

\* Excluding staff serving aged 0-2

Teacher to Pupil Ratio (Data as of Sept. 2022)	
Teacher to pupil ratio in morning session	1 : 7.7
Teacher to pupil ratio in afternoon session	1 : 7.7
Ratio includes classes aged 2-3	Yes

No. of Enrolment (Data as of Sept. 2022)				
	Nursery	Lower KG	Upper KG	Total
AM Session	0	0	0	0
PM Session	0	0	0	0
WD Session	16	30	32	78

Annual Fees (2023 / 24 School Year)				
		Nursery	Lower KG	Upper KG
Annual Fees After Deduction of Government Subsidy (No. of Instalment)	AM Session	-	-	-
	PM Session	-	-	-
	WD Session	\$16,068 (12)	\$16,068 (12)	\$16,068 (12)

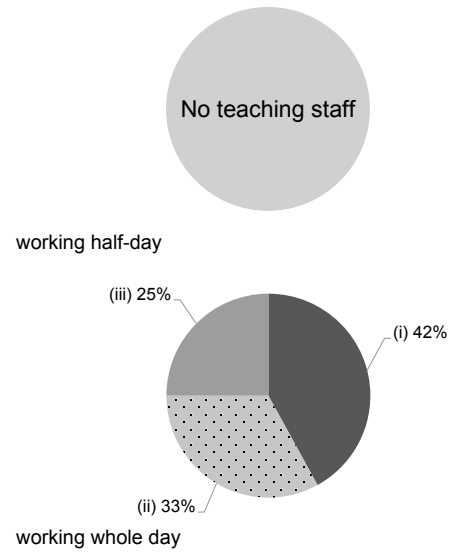
Please refer to the Fees Certificate for details of fees information.

Child Care Services (Data as of Sept. 2022)			
With child care services for children aged 2-3	Yes	With child care services for children aged under 2	No
Fee level (per annum)	(half - day)	No. of enrolment aged 2-3	14
	\$57,228 (full - day)	Joining Child Care Centre Subsidy Scheme	Yes
Providing occasional child care services	Yes	Providing extended hours services	No

Curriculum Details	
Curriculum type : Local	
Curriculum planning	
<p>Our curriculum is set around children's daily life and its relevant experiences. We organize various learning activities for kids to cultivate a spirit to respect God and love people; we promote the balanced development of children in the spiritual, cognitive, physical, social, emotional, asesthetic and practical aspects, so as to set a good foundation for their future lives.</p> <p>We will follow the "Kindergarten Education Curriculum Guide" (2017) to plan curriculum. Children of nursery classes will not be asked to write, and there will not be mechanical copying exercises and drills on calculation.</p>	
Learning / Teaching approach & activities	
<p>Our kindergarten is child-oriented. We inspire children to develop multiple intelligences through integrated teaching, school-based sound and emotion teaching, project study, outdoor visits, group discussion, moral education, culture and arts activities, biliteracy and trilingualism, as well as the Whole Language Approach. We hire specialist teachers to teach English, Mandarin, physical fitness and dance.</p>	
Assessment of children's learning experiences	
<p>Once a theme is completed for a class, the teacher records children's learning progress and creates a personal portfolio for each child with details from continuous observation and appraisals collected from parents. Students' learning portfolios are distributed at the parents' meeting at the end of each semester until graduation.</p>	

Monthly salary range of principal & teaching staff (Data as of Mar. 2023)

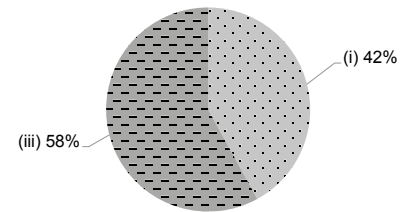
- (i) ≤ \$30,000
- (ii) \$30,001 - \$40,000
- (iii) > \$40,000



School Characteristics	
School vision and mission	
<p>Upholding the Christ's love and spirit to serve, our school builds a great team. Our philosophy is to affect life with life and to serve the community, children and parents with our hands wholeheartedly. We strive to provide high quality education services and to nurture children to attain holistic development.</p>	
Support to students	
<p>On-site Pre-school Rehabilitation Services, Professional counseling by social workers, Home visits by teachers, Library Corner for parents to borrow books, New student adaption period, Visit primary school, etc.</p>	
Support to non-Chinese speaking (NCS) students	
No information	
Support to students with special needs	
<p>Joining the On-site Pre-school Rehabilitation Services. Resident social worker provides individual game therapy, social groups, focus groups and assists in referring to intelligent evaluation services for students in need.</p>	
Link with parents	
Parent-teacher association : Yes	
Other activities / communication with parents	
<p>New student parents' conferences, parents' exchange evenings, parents' day, parent seminars, parents' school, graduation ceremony, alumni reunion, parents' lesson observation, mother's day event, father's day event, parent-child school outings, parents volunteer service.</p>	

Working experience of principal & teaching staff in pre-primary education (Data as of Mar. 2023)

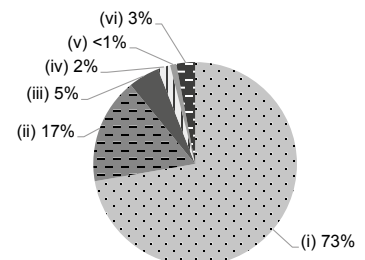
- (i) < 4 years
- (ii) 4 - 7 years
- (iii) > 7 years



2021/22 School Expenditure Information

Expenditure information based on audited account Yes

- (i) salary of principal & teaching staff
- (ii) non-teaching staff salary
- (iii) rent, management fees, rates & government rent
- (iv) teaching resources
- (v) staff training & professional development
- (vi) other expenses



Price of Major School Items (2022 / 23 School Year)			
Summer uniform	\$459 / set	Winter uniform	\$633 / set
School bag	\$100 / each	Tea and snacks	No such item
Textbooks	No such item	Exercise books/ workbooks	\$25-36 / year
Stationery	\$35-78 / year	Bedding items	\$400 / set