



YAUMATEI YANG MEMORIAL METHODIST PRE-SCHOOL

Joining
2023/24 KG Education Scheme

Yau Tsim &
Mong Kok

Address : 3/F, 54 WATERLOO ROAD, KOWLOON

School No. 565024

Tel. : 2251 0866

Fax. : 2251 0845

Location No. 0001

School Information	
School Category	Non-profit-making
Student Category	Co-educational
Name of School Supervisor	MS TO MAN LING
Name of School Principal	MS YIP WAI LAI
School Founding Year	1967
Total No. of Permitted Accommodation of Classrooms in Use (Data as of Sept. 2022)	103
Number of Registered Classrooms	Not applicable
Outdoor Playground	No
Indoor Playground	Yes
Music Room	No
Other Special Room(s) / Area(s)	No information
Total No. of Principal & Teaching Staff (Data as of Sept. 2022) *	12
School Website	http://www.yymmmps.edu.hk
Quality Review : Result and Report	Meeting the prescribed standards https://www.edb.gov.hk/attachment/en/edu-system/preprimary-kindergarten/quality-assurance-frame-work/qr/qr-report/YMT_YangMemorial_Methodist.pdf

No. & Qualification of Principal & Teaching Staff (Data as of Sept. 2022) *	
Academic Qualification	
Degree holders	10
Non-degree holders	2
Professional Qualification	
C(ECE) or above	12
Qualified KG teachers	0
Other teacher trainings	0
Qualified assistant KG teachers	0
Others	0

* Excluding staff serving aged 0-2

Teacher to Pupil Ratio (Data as of Sept. 2022)	
Teacher to pupil ratio in morning session	1 : 7.8
Teacher to pupil ratio in afternoon session	1 : 7.8
Ratio includes classes aged 2-3	Yes

No. of Enrolment (Data as of Sept. 2022)				
	Nursery	Lower KG	Upper KG	Total
AM Session	0	0	0	0
PM Session	0	0	0	0
WD Session	28	26	32	86

Annual Fees (2023 / 24 School Year)				
		Nursery	Lower KG	Upper KG
Annual Fees After Deduction of Government Subsidy (No. of Instalment)	AM Session	-	-	-
	PM Session	-	-	-
	WD Session	\$12,876 (12)	\$12,876 (12)	\$12,876 (12)

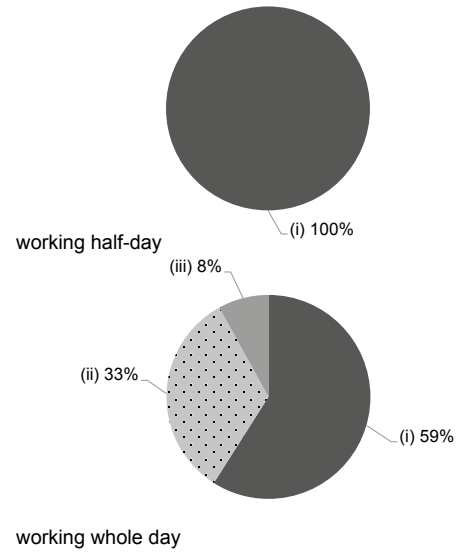
Please refer to the Fees Certificate for details of fees information.

Child Care Services (Data as of Sept. 2022)			
With child care services for children aged 2-3	Yes	With child care services for children aged under 2	No
Fee level (per annum)	(half - day)	No. of enrolment aged 2-3	7
	\$41,520 (full - day)	Joining Child Care Centre Subsidy Scheme	Yes
Providing occasional child care services	Yes	Providing extended hours services	No

Curriculum Details	
Curriculum type : Local	
Curriculum planning	
To achieve life education and based on the philosophical concept of adaptation to the course, we design children-centred storytelling and dramatic comprehensive curriculum to achieve children's moral, intellectual, physical, social, aesthetic and spiritual development.	
We will follow the "Kindergarten Education Curriculum Guide" (2017) to plan curriculum. Children of nursery classes will not be asked to write, and there will not be mechanical copying exercises and drills on calculation.	
Learning / Teaching approach & activities	
Activity learning. Storytelling and dramatic art teaching, group activities, outdoor visiting, uniform teams, emotion groups, sensory integration training and adventure training.	
Assessment of children's learning experiences	
At the end of each semester, a learning assessment report will be made for each student.	

Monthly salary range of principal & teaching staff
(Data as of Mar. 2023)

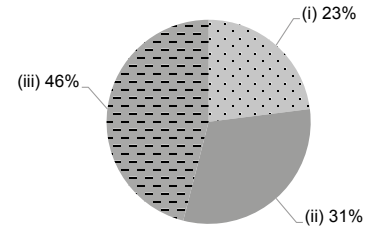
- (i) ≤ \$30,000
- (ii) \$30,001 - \$40,000
- (iii) > \$40,000



School Characteristics	
School vision and mission	
Provide quality education with love and expertise; "morality and love oriented"; respect and love children and provide them with equal opportunities; promote holistic development and develop life-long love of learning; make the children "respect God, love people, ready to learn and willing to take actions".	
Support to students	
School life experience day for new students, new students adaption period, P.1 preparation class, emotional guidance by school social workers, life education support services.	
Support to non-Chinese speaking (NCS) students	
Appoint additional teaching staff / teaching assistants to support NCS students learning Chinese; create an inclusive learning environment to facilitate students' integration.	
Support to students with special needs	
Joining the On-site Pre-school Rehabilitation Services. Integrated Programme (IP) provides training and care for the students with special educational needs. IP service gives professional support for children and their families. The enrollment of IP service refer to our school should be through the Central Referral System from Rehabilitation Services of the Social Welfare Department.	
Link with parents	
Parent-teacher association : Yes	
Other activities / communication with parents	
Parents' day, parents' talks and parenting courses; voluntary work in school activities, parent - child reading incentive plan and parent - child activities; parent - teacher association – promote communication and cooperation between the parents and the school and organize parent - child activities to help children grow up healthy; parent support group – improve the parents' parenting knowledge and encourage mutual care; parent resource center – provide the lending service of CD, story books and parenting education books.	

Working experience of principal & teaching staff in pre-primary education
(Data as of Mar. 2023)

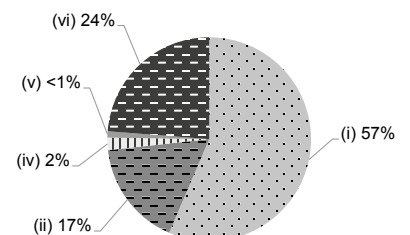
- (i) < 4 years
- (ii) 4 - 7 years
- (iii) > 7 years



2021/22 School Expenditure Information

Expenditure information based on audited account Yes

- (i) salary of principal & teaching staff
- (ii) non-teaching staff salary
- (iii) rent, management fees, rates & government rent
- (iv) teaching resources
- (v) staff training & professional development
- (vi) other expenses



Price of Major School Items (2022 / 23 School Year)			
Summer uniform	\$110 / set	Winter uniform	\$120 / set
School bag	\$80 / each	Tea and snacks	\$0 / year
Textbooks	\$245-774 / year	Exercise books/ workbooks	\$0 / year
Stationery	\$0 / year	Bedding items	\$0 / set