



PO LEUNG KUK CHI PUI KINDERGARTEN

Tsuen Wan

Address : 1/F, BLOCK 2, LEI MUK SHUE ESTATE, KWAI CHUNG,
NEW TERRITORIES

Joining
2023/24 KG Education Scheme

School No. 563757

Location No. 0001

Tel. : 2426 7643

Fax. : 2410 1041

School Information	
School Category	Non-profit-making
Student Category	Co-educational
Name of School Supervisor	MS LAI WAI LIN
Name of School Principal	MS WONG YIN CHING
School Founding Year	1976
Total No. of Permitted Accommodation of Classrooms in Use (Data as of Sept. 2022)	75
Number of Registered Classrooms	Not applicable
Outdoor Playground	No
Indoor Playground	Yes
Music Room	Yes
Other Special Room(s) / Area(s)	No information
Total No. of Principal & Teaching Staff (Data as of Sept. 2022) *	10
School Website	https://www.poleungkuk.org.hk/child-care-services/cpkgn
Quality Review : Result and Report	Meeting the prescribed standards https://www.edb.gov.hk/attachment/en/edu-system/preprimary-kindergarten/quality-assurance-framework/qr/qr-report/PLK_LMS.pdf

No. & Qualification of Principal & Teaching Staff (Data as of Sept. 2022) *	
Academic Qualification	
Degree holders	6
Non-degree holders	4
Professional Qualification	
C(ECE) or above	10
Qualified KG teachers	0
Other teacher trainings	0
Qualified assistant KG teachers	0
Others	0

* Excluding staff serving aged 0-2

Teacher to Pupil Ratio (Data as of Sept. 2022)	
Teacher to pupil ratio in morning session	1 : 9.9
Teacher to pupil ratio in afternoon session	1 : 9.9
Ratio includes classes aged 2-3	Yes

No. of Enrolment (Data as of Sept. 2022)				
	Nursery	Lower KG	Upper KG	Total
AM Session	0	0	0	0
PM Session	0	0	0	0
WD Session	20	23	28	71

Annual Fees (2023 / 24 School Year)				
		Nursery	Lower KG	Upper KG
Annual Fees After Deduction of Government Subsidy (No. of Instalment)	AM Session	-	-	-
	PM Session	-	-	-
	WD Session	\$16,800 (12)	\$16,800 (12)	\$16,800 (12)

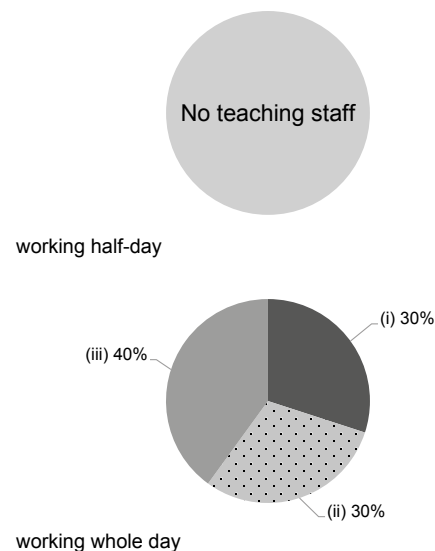
Please refer to the Fees Certificate for details of fees information.

Child Care Services (Data as of Sept. 2022)			
With child care services for children aged 2-3	Yes	With child care services for children aged under 2	No
Fee level (per annum)	(half - day)	No. of enrolment aged 2-3	28
	\$40,836 (full - day)	Joining Child Care Centre Subsidy Scheme	Yes
Providing occasional child care services	Yes	Providing extended hours services	Yes

Curriculum Details	
Curriculum type : Local	
Curriculum planning	
<p>According to children's development needs, we design teaching activities based on an open educational concept. We design learning contents with reference to children's life experience and interests and provide such activities as inquiry-based science, drama, Orff Music, emotion education and creative art activities to promote children's balanced development. We attach importance to children's moral development and add moral education in daily class activities.</p> <p>We will follow the "Kindergarten Education Curriculum Guide" (2017) to plan curriculum. Children of nursery classes will not be asked to write, and there will not be mechanical copying exercises and drills on calculation.</p>	
Learning / Teaching approach & activities	
<p>We design an open environment, divide different learning spaces and broaden activity space to develop children's active learning ability. According to children's development and abilities, we place teaching aids of different degrees in various learning areas to improve children's learning interest. We adopt mixed age learning mode to promote children's sociability development.</p>	
Assessment of children's learning experiences	
<p>We make a Study Portfolio and a children's development report to record and have on-going and summative assessment on children's development in all aspects.</p>	

Monthly salary range of principal & teaching staff
(Data as of Mar. 2023)

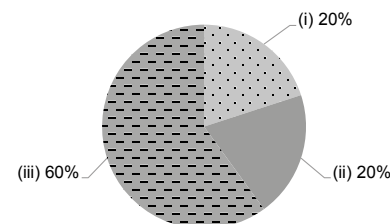
- (i) ≤ \$30,000
- (ii) \$30,001 - \$40,000
- (iii) > \$40,000



School Characteristics	
School vision and mission	
<p>To meet the needs of families and the society, we provide diversified services such as integrated programme, respite care and extended service to provide full care for children. A rich learning environment is designed for cultivating children's spirit of exploration and self-study to lay a foundation for lifelong learning.</p>	
Support to students	
<p>We, through different channels, learn the children and parents' needs and provide social worker and referral services for those in need. Children with special needs are provided with speech therapy, physical therapy, occupational therapy and clinical psychological service. Professional teams are set up to provide English reading programme for graduates and professional paramedic programme.</p>	
Support to non-Chinese speaking (NCS) students	
<p>Received Grant for Support to NCS Students; engage NCS parent volunteers to enhance communication between school and parents; create an enriched language environment for mastery of the Chinese language; create an inclusive learning environment to facilitate students' integration; facilitate professional development for teachers to develop effective strategies to help NCS students learn Chinese.</p>	
Support to students with special needs	
<p>Joining the On-site Pre-school Rehabilitation Services.</p>	
Link with parents	
<p>Parent-teacher association : Yes</p>	
Other activities / communication with parents	
<p>Including parents' talks, class observation, newsletters, parents volunteers, parent-child activities, parent group and parents resource corner.</p>	

Working experience of principal & teaching staff in pre-primary education
(Data as of Mar. 2023)

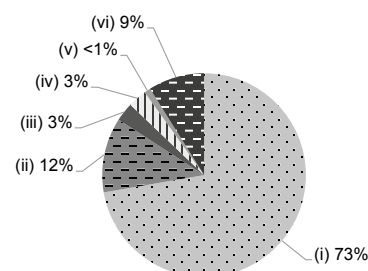
- (i) < 4 years
- (ii) 4 - 7 years
- (iii) > 7 years



2021/22 School Expenditure Information

Expenditure information based on audited account Yes

- (i) salary of principal & teaching staff
- (ii) non-teaching staff salary
- (iii) rent, management fees, rates & government rent
- (iv) teaching resources
- (v) staff training & professional development
- (vi) other expenses



Price of Major School Items (2022 / 23 School Year)			
Summer uniform	\$72-112 / set	Winter uniform	\$277-406 / set
School bag	\$34 / each	Tea and snacks	\$0 / year
Textbooks	\$748-770 / year	Exercise books/workbooks	\$0 / year
Stationery	\$0 / year	Bedding items	\$0 / set