



TSUNG TSIN MISSION OF HONG KONG ON YEE NURSERY SCHOOL

Kwun Tong

Address : G/F, KO SHING HOUSE, KO YEE ESTATE, YAU TONG,
KOWLOON

Joining
2023/24 KG Education Scheme

School No. 563749

Location No. 0001

Tel. : 2727 6468

Fax. : 2775 2583

School Information	
School Category	Non-profit-making
Student Category	Co-educational
Name of School Supervisor	MS LO YUEN YIN BETTY
Name of School Principal	MS CHANG MEI YUNG
School Founding Year	2000
Total No. of Permitted Accommodation of Classrooms in Use (Data as of Sept. 2022)	92
Number of Registered Classrooms	4
Outdoor Playground	Yes
Indoor Playground	Yes
Music Room	Yes
Other Special Room(s) / Area(s)	Multi-function Room
Total No. of Principal & Teaching Staff (Data as of Sept. 2022) *	11
School Website	https://oe.tmsd.org/
Quality Review : Result and Report	Meeting the prescribed standards https://www.edb.gov.hk/attachment/tc/edu-system/preprimary-kindergarten/quality-assurance-frame-work/qr/qr-report/TTMHK_OnYee.pdf

No. & Qualification of Principal & Teaching Staff (Data as of Sept. 2022) *	
Academic Qualification	
Degree holders	9
Non-degree holders	2
Professional Qualification	
C(ECE) or above	11
Qualified KG teachers	0
Other teacher trainings	0
Qualified assistant KG teachers	0
Others	0

* Excluding staff serving aged 0-2

Teacher to Pupil Ratio (Data as of Sept. 2022)	
Teacher to pupil ratio in morning session	1 : 8.5
Teacher to pupil ratio in afternoon session	1 : 8.5
Ratio includes classes aged 2-3	Yes

No. of Enrolment (Data as of Sept. 2022)				
	Nursery	Lower KG	Upper KG	Total
AM Session	0	0	0	0
PM Session	0	0	0	0
WD Session	18	30	30	78

Annual Fees (2023 / 24 School Year)				
		Nursery	Lower KG	Upper KG
Annual Fees After Deduction of Government Subsidy (No. of Instalment)	AM Session	-	-	-
	PM Session	-	-	-
	WD Session	\$16,068 (12)	\$16,068 (12)	\$16,068 (12)

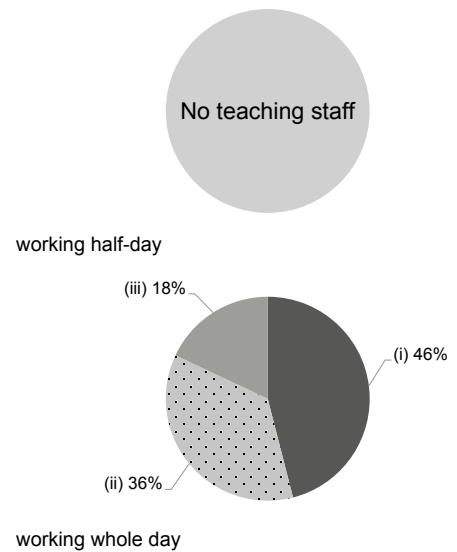
Please refer to the Fees Certificate for details of fees information.

Child Care Services (Data as of Sept. 2022)			
With child care services for children aged 2-3	Yes	With child care services for children aged under 2	No
Fee level (per annum)	(half - day)	No. of enrolment aged 2-3	16
	\$50,220 (full - day)	Joining Child Care Centre Subsidy Scheme	Yes
Providing occasional child care services	Yes	Providing extended hours services	Yes

Curriculum Details	
Curriculum type : Local	
Curriculum planning	
<p>We set the featured curriculum with life education as axis and according to "The Guide to the Pre-primary Curriculum" published by the Education Bureau aiming to achieve an integrated and comprehensive development of children's physical, cognitive and language, moral, affective and social, and aesthetic area. We arrange native English teachers and Mandarin teachers to create a vivid language learning environment for the children.</p> <p>We will follow the "Kindergarten Education Curriculum Guide" (2017) to plan curriculum. Children of nursery classes will not be asked to write, and there will not be mechanical copying exercises and drills on calculation.</p>	
Learning / Teaching approach & activities	
<p>With the child-centered principle, teachers apply diverse pedagogies integrating with culture, art, technology as well as the social resources, so that the children are inspired into a spirit of exploration and creativity.</p>	
Assessment of children's learning experiences	
<p>We conduct ongoing learning assessment for children through theme-based learning assessment form, children observation record, analysis of children's works and report on physical and psychological development of children.</p>	

Monthly salary range of principal & teaching staff
(Data as of Mar. 2023)

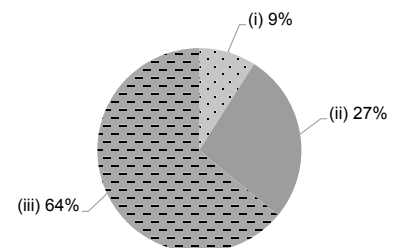
- (i) ≤ \$30,000
- (ii) \$30,001 - \$40,000
- (iii) > \$40,000



School Characteristics	
School vision and mission	
<p>1. Teaching children according to the truth of the Bible and experiencing the love of Christ. 2. Nurturing good character and building up a happy life. 3. Constructing diverse knowledge and inspiring self-learning ability.</p>	
Support to students	
<p>We have school-based social workers, educational psychologists and speech therapists who help promoting children's holistic development and enhancing family harmony. Agency's clinical psychologist also provides support when necessary. Intergrated programme, occasional child care service and extended hour service are also in place for needy children and families.</p>	
Support to non-Chinese speaking (NCS) students	
<p>Create an enriched language environment for mastery of the Chinese language; create an inclusive learning environment to facilitate students' integration.</p>	
Support to students with special needs	
<p>Joining the On-site Pre-school Rehabilitation Services. Also, through the "Integrated Programme in Kindergarten-cum-Child Care Centre", we support children with special needs referred by the SWD. Our educational psychologists, clinical psychologists and speech therapists also render support to other children with special needs without SWD referrals.</p>	
Link with parents	
Parent-teacher association : Yes	
Other activities / communication with parents	
<p>We emphasize home-school collaboration and have set up Parent Teacher Association (PTA). PTA hold regular meetings to organize educational talks and celebrating activities, facilitating home-school connection. Also, parents are invited to parent meeting and other activities to enhance their understanding on the school's philosophy and the children's learning.</p>	

Working experience of principal & teaching staff
in pre-primary education
(Data as of Mar. 2023)

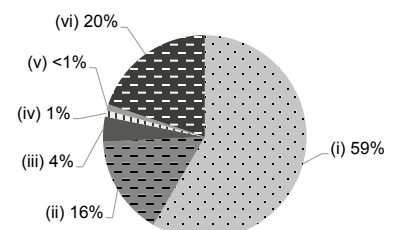
- (i) < 4 years
- (ii) 4 - 7 years
- (iii) > 7 years



2021/22 School Expenditure Information

Expenditure information based on audited account Yes

- (i) salary of principal & teaching staff
- (ii) non-teaching staff salary
- (iii) rent, management fees, rates & government rent
- (iv) teaching resources
- (v) staff training & professional development
- (vi) other expenses



Price of Major School Items (2022 / 23 School Year)			
Summer uniform	\$116-250 / set	Winter uniform	\$140-326 / set
School bag	\$95 / each	Tea and snacks	\$0 / year
Textbooks	\$750-1,000 / year	Exercise books/ workbooks	\$0 / year
Stationery	\$0 / year	Bedding items	\$530 / set