



# PO LEUNG KUK LAU CHUN KINDERGARTEN

Tai Po

Address : G/F, KWONG LAI HOUSE, KWONG FUK ESTATE, TAI PO,  
NEW TERRITORIES

Joining  
2023/24 KG Education Scheme

School No. 563722

Tel. : 2653 2932

Fax. : 2638 5988

Location No. 0001

School Information	
School Category	Non-profit-making
Student Category	Co-educational
Name of School Supervisor	MS LAI WAI LIN
Name of School Principal	MS TSANG SHUN YAU
School Founding Year	1984
Total No. of Permitted Accommodation of Classrooms in Use (Data as of Sept. 2022)	78
Number of Registered Classrooms	5
Outdoor Playground	No
Indoor Playground	Yes
Music Room	Yes
Other Special Room(s) / Area(s)	No information
Total No. of Principal & Teaching Staff (Data as of Sept. 2022) *	11
School Website	<a href="https://www.poleungkuk.org.hk/child-care-services/lckgn">https://www.poleungkuk.org.hk/child-care-services/lckgn</a>
Quality Review : Result and Report	Meeting the prescribed standards <a href="https://www.edb.gov.hk/attachment/en/edu-system/preprimary-kindergarten/quality-assurance-frame-work/qv/qv-report/PLK_KwongFuk.pdf">https://www.edb.gov.hk/attachment/en/edu-system/preprimary-kindergarten/quality-assurance-frame-work/qv/qv-report/PLK_KwongFuk.pdf</a>

No. & Qualification of Principal & Teaching Staff (Data as of Sept. 2022) *	
Academic Qualification	
Degree holders	5
Non-degree holders	6
Professional Qualification	
C(ECE) or above	11
Qualified KG teachers	0
Other teacher trainings	0
Qualified assistant KG teachers	0
Others	0

\* Excluding staff serving aged 0-2

Teacher to Pupil Ratio (Data as of Sept. 2022)	
Teacher to pupil ratio in morning session	1 : 8.3
Teacher to pupil ratio in afternoon session	1 : 8.3
Ratio includes classes aged 2-3	Yes

No. of Enrolment (Data as of Sept. 2022)				
	Nursery	Lower KG	Upper KG	Total
AM Session	0	0	0	0
PM Session	0	0	0	0
WD Session	27	18	24	69

Annual Fees (2023 / 24 School Year)				
		Nursery	Lower KG	Upper KG
Annual Fees After Deduction of Government Subsidy (No. of Instalment)	AM Session	Free	Free	Free
	PM Session	Free	Free	Free
	WD Session	\$20,544 (12)	\$20,544 (12)	\$20,544 (12)

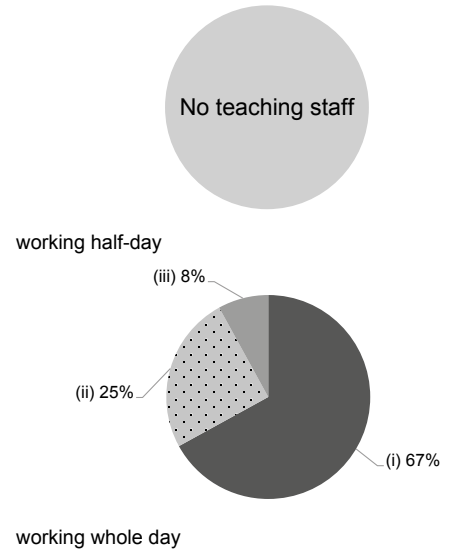
Please refer to the Fees Certificate for details of fees information.

Child Care Services (Data as of Sept. 2022)			
With child care services for children aged 2-3	Yes	With child care services for children aged under 2	No
Fee level (per annum)	(half - day)	No. of enrolment aged 2-3	22
	\$43,644 (full - day)	Joining Child Care Centre Subsidy Scheme	Yes
Providing occasional child care services	Yes	Providing extended hours services	Yes

Curriculum Details	
Curriculum type : Local	
Curriculum planning	
<p>Our curriculum is designed around children to cater to their development needs. Children learn a variety of topics that are planned around their real life experiences and interests through a diversified range of activities, including Enquiry-Based Science, Drama, ORFF MUSIC, Affective Education, Creative Arts activities, etc., to attain balanced development; Children are provided with Multi-Sensory training to encourage exploration and improve their ability of information processing and problem solving. We regularly review the aptness of our curriculum.</p> <p>We will follow the "Kindergarten Education Curriculum Guide" (2017) to plan curriculum. Children of nursery classes will not be asked to write, and there will not be mechanical copying exercises and drills on calculation.</p>	
Learning / Teaching approach & activities	
<p>With emphasis on children's personal exploration, we organize children to go out of the classroom and participate in community activities such as visits. We adopt activity-based teaching, project-based learning, and individual and group learning approaches in class, and teach children music according to Orff Music Philosophy. Native teachers are employed to teach children English, and we also arrange other activities, such as setting up interest classes.</p>	
Assessment of children's learning experiences	
<p>Children's learning portfolios and development reports are built to record their development in all aspects for continuous and summative assessment.</p>	

Monthly salary range of principal & teaching staff  
(Data as of Mar. 2023)

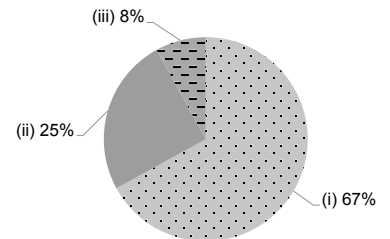
- (i) ≤ \$30,000
- (ii) \$30,001 - \$40,000
- (iii) > \$40,000



School Characteristics	
School vision and mission	
<p>Through a diversity of child care services that meet the needs of the society and families, we aim at children's all-round care and holistic education. Our enriching learning environment is constructive to the development of children's inquiry spirit and self-learning spirit, and helps lay a solid foundation for life-long learning.</p>	
Support to students	
<p>Different channels to get to know the needs of children and their parents, and social workers and referral services for families in need. Professional auxiliary medical services for children with special learning needs, including verbal, physical and occupational therapies and clinical psychologist services.</p>	
Support to non-Chinese speaking (NCS) students	
<p>Received Grant for Support to NCS Students; create an enriched language environment for mastery of the Chinese language; facilitate professional development for teachers to develop effective strategies to help NCS students learn Chinese.</p>	
Support to students with special needs	
<p>Joining the On-site Pre-school Rehabilitation Services.</p>	
Link with parents	
<p>Parent-teacher association : Yes</p>	
Other activities / communication with parents	
<p>Parents Seminars, Visits to Classes, Newsletters, Volunteer Team, Parent-Child Activities, Parents' Meetings, Resources Corner, etc.</p>	

Working experience of principal & teaching staff in pre-primary education  
(Data as of Mar. 2023)

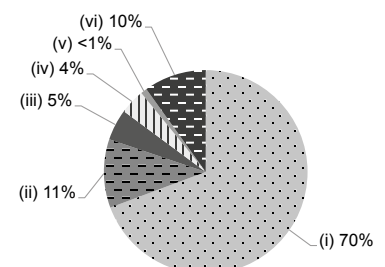
- (i) < 4 years
- (ii) 4 - 7 years
- (iii) > 7 years



2021/22 School Expenditure Information

Expenditure information based on audited account Yes

- (i) salary of principal & teaching staff
- (ii) non-teaching staff salary
- (iii) rent, management fees, rates & government rent
- (iv) teaching resources
- (v) staff training & professional development
- (vi) other expenses



Price of Major School Items (2022 / 23 School Year)			
Summer uniform	\$72-112 / set	Winter uniform	\$277-406 / set
School bag	\$34 / each	Tea and snacks	No such item
Textbooks	\$748-770 / year	Exercise books/ workbooks	\$0 / year
Stationery	No such item	Bedding items	No such item