



YAN CHAI HOSPITAL KWOK CHI LEUNG KINDERGARTEN

Joining
2023/24 KG Education Scheme

Central &
Western

Address : UPPER GROUND FLOOR (SOUTH), 9 HIGH STREET,
SAI YING PUN, HONG KONG

School No. 563439

Tel. : 2547 8250

Fax. : 2546 0151

Location No. 0001

School Information	
School Category	Non-profit-making
Student Category	Co-educational
Name of School Supervisor	DR CHEUNG MAN KA
Name of School Principal	MS WONG YUK YING
School Founding Year	1995
Total No. of Permitted Accommodation of Classrooms in Use (Data as of Sept. 2022)	101
Number of Registered Classrooms	Not applicable
Outdoor Playground	No
Indoor Playground	Yes
Music Room	No
Other Special Room(s) / Area(s)	Multi-function room
Total No. of Principal & Teaching Staff (Data as of Sept. 2022) *	12
School Website	http://www.ychkclkg.edu.hk
Quality Review : Result and Report	Meeting the prescribed standards https://www.edb.gov.hk/attachment/en/edu-system/preprimary-kindergarten/quality-assurance-frame-work/qv/qv-report/YCH_KwokChiLeung.pdf

No. & Qualification of Principal & Teaching Staff (Data as of Sept. 2022) *	
Academic Qualification	
Degree holders	5
Non-degree holders	7
Professional Qualification	
C(ECE) or above	11
Qualified KG teachers	1
Other teacher trainings	0
Qualified assistant KG teachers	0
Others	0

* Excluding staff serving aged 0-2

Teacher to Pupil Ratio (Data as of Sept. 2022)	
Teacher to pupil ratio in morning session	1 : 6.0
Teacher to pupil ratio in afternoon session	1 : 6.0
Ratio includes classes aged 2-3	Yes

No. of Enrolment (Data as of Sept. 2022)				
	Nursery	Lower KG	Upper KG	Total
AM Session	0	0	0	0
PM Session	0	0	0	0
WD Session	19	16	20	55

Annual Fees (2023 / 24 School Year)				
		Nursery	Lower KG	Upper KG
Annual Fees After Deduction of Government Subsidy (No. of Instalment)	AM Session	-	-	-
	PM Session	-	-	-
	WD Session	\$8,004 (12)	\$8,004 (12)	\$8,004 (12)

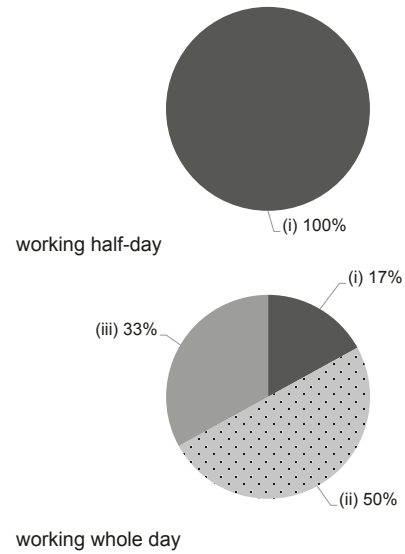
Please refer to the Fees Certificate for details of fees information.

Child Care Services (Data as of Sept. 2022)			
With child care services for children aged 2-3	Yes	With child care services for children aged under 2	No
Fee level (per annum)	\$31,008 (half - day)	No. of enrolment aged 2-3	11
	\$49,824 (full - day)	Joining Child Care Centre Subsidy Scheme	Yes
Providing occasional child care services	Yes	Providing extended hours services	Yes

Curriculum Details	
Curriculum type : Local	
Curriculum planning	
<p>The curriculum content is based on the children's development requirements and interests, from the moral, intellectual, physical, social, aesthetic, individual, mind and basic knowledge aspects. Children's initiative in cognition, emotion and study are highlighted. With children's mother language as the teaching media, activities are implemented in an all language teaching method. The teaching content is arranged in subjects to allow children to learn from games by project-based studies. Related to the subject, the classroom arrangement can attract children's attention and arouse their learning motivation.</p> <p>We will follow the "Kindergarten Education Curriculum Guide" (2017) to plan curriculum. Children of nursery classes will not be asked to write, and there will not be mechanical copying exercises and drills on calculation.</p>	
Learning / Teaching approach & activities	
<p>School-based curriculum is emphasized to carry out the children-oriented exploration and freedom to learn from the game. A pleasant and effective learning outcome can be achieved by thinking, making attempts and discussion, Mandarin learning and dancing activities are arranged by group in the morning. Friday is the multiple activity day, to provide physical activities and foreign teachers' interesting English activities. To strengthen children's moral cultivation, citizen and moral education permeates the theme teaching, project-based learning and regular activities to foster good morality and behavior in the subtle-influence environment. Visiting activities and joint-school activities are arranged according to the curriculum requirements. Primary school campus can be used to carry out a life experience course.</p>	
Assessment of children's learning experiences	
<p>The assessment content is set according to the children's physical and mental growth development. The assessment content includes cognition, physical ability, emotion, social, aesthetic perception and knowledge development. With children's learning records used, children's learning ability can be analyzed through children's works, anecdotes records and work performance to make teaching plan reviews and amendment. Biannual parents' meeting can help to get to know children's ability level.</p>	

Monthly salary range of principal & teaching staff (Data as of Mar. 2023)

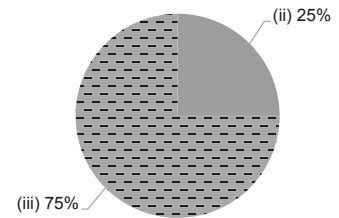
- (i) ≤ \$30,000
- (ii) \$30,001 - \$40,000
- (iii) > \$40,000



School Characteristics	
School vision and mission	
<p>Mission: An excellent environment is built for children to help cultivate their active learning attitude, good morality and sociality, creative thinking so as to develop potential and to achieve whole-person development. Ambition: with the spirit of Benevolence, high quality whole-person education is provided to prepare children to be the nation pillars.</p>	
Support to students	
<p>School social service is introduced to provide growth class and family tutoring. Parents' education lecture, parents' meeting, parents' day and new students' adaptive period are taken place. The interpersonal contact and communication among teachers, parents and children can build a friend relationship to share life and to help children growth.</p>	
Support to non-Chinese speaking (NCS) students	
<p>Received Grant for Support to NCS Students; arrange interpretation / translation services; engage NCS parent volunteers to enhance communication between school and parents; create an enriched language environment for mastery of the Chinese language; create an inclusive learning environment to facilitate students' integration; collaborate with non-governmental organisations (NGOs) to create an inclusive learning environment; facilitate professional development for teachers to develop effective strategies to help NCS students learn Chinese; participate in school-based professional support programmes organised by EDB.</p>	
Support to students with special needs	
<p>Joining the On-site Pre-school Rehabilitation Services.</p>	
Link with parents	
<p>Parent-teacher association : No</p>	
Other activities / communication with parents	
<p>Parent-child day, parents' voluntary activities, parents' lectures and workshops, comprehensive School cooperates with primary schools, community organization.</p>	

Working experience of principal & teaching staff in pre-primary education (Data as of Mar. 2023)

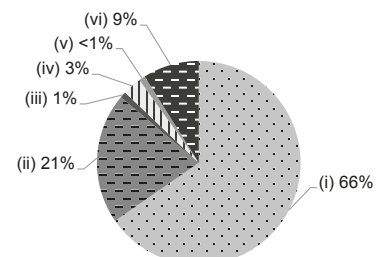
- (i) < 4 years
- (ii) 4 - 7 years
- (iii) > 7 years



2021/22 School Expenditure Information

Expenditure information based on audited account Yes

- (i) salary of principal & teaching staff
- (ii) non-teaching staff salary
- (iii) rent, management fees, rates & government rent
- (iv) teaching resources
- (v) staff training & professional development
- (vi) other expenses



Price of Major School Items (2022 / 23 School Year)

Summer uniform	\$432 / set	Winter uniform	\$637 / set
School bag	\$90 / each	Tea and snacks	\$0 / year
Textbooks	\$1,200 / year	Exercise books/ workbooks	\$0 / year
Stationery	\$0 / year	Bedding items	\$325 / set