



HONG KONG SHENG KUNG HUI ST. SIMON'S LEUNG KING NURSERY SCHOOL

Tuen Mun

Address : 9-16, G/F, LEUNG CHI HOUSE, LEUNG KING ESTATE,
TUEN MUN, NEW TERRITORIES

Joining
2023/24 KG Education Scheme

School No. 563277

Location No. 0001

Tel. : 2464 6939

Fax. : 2462 6794

School Information	
School Category	Non-profit-making
Student Category	Co-educational
Name of School Supervisor	MS LEE MEE LING LOUISA
Name of School Principal	MS CHU CHING YING
School Founding Year	1988
Total No. of Permitted Accommodation of Classrooms in Use (Data as of Sept. 2022)	95
Number of Registered Classrooms	Not applicable
Outdoor Playground	No
Indoor Playground	Yes
Music Room	Yes
Other Special Room(s) / Area(s)	Group counseling corner
Total No. of Principal & Teaching Staff (Data as of Sept. 2022) *	10
School Website	http://www.sslk.edu.hk
Quality Review : Result and Report	Meeting the prescribed standards https://www.edb.gov.hk/attachment/tc/edu-system/preprimary-kindergarten/quality-assurance-frame-work/qr/qr-report/SKH_StSimon_LeungKing.pdf

No. & Qualification of Principal & Teaching Staff (Data as of Sept. 2022) *	
Academic Qualification	
Degree holders	7
Non-degree holders	3
Professional Qualification	
C(ECE) or above	10
Qualified KG teachers	0
Other teacher trainings	0
Qualified assistant KG teachers	0
Others	0

* Excluding staff serving aged 0-2

Teacher to Pupil Ratio (Data as of Sept. 2022)	
Teacher to pupil ratio in morning session	1 : 8.2
Teacher to pupil ratio in afternoon session	1 : 8.2
Ratio includes classes aged 2-3	Yes

No. of Enrolment (Data as of Sept. 2022)				
	Nursery	Lower KG	Upper KG	Total
AM Session	0	0	0	0
PM Session	0	0	0	0
WD Session	16	25	29	70

Annual Fees (2023 / 24 School Year)				
		Nursery	Lower KG	Upper KG
Annual Fees After Deduction of Government Subsidy (No. of Instalment)	AM Session	-	-	-
	PM Session	-	-	-
	WD Session	\$11,028 (12)	\$11,028 (12)	\$11,028 (12)

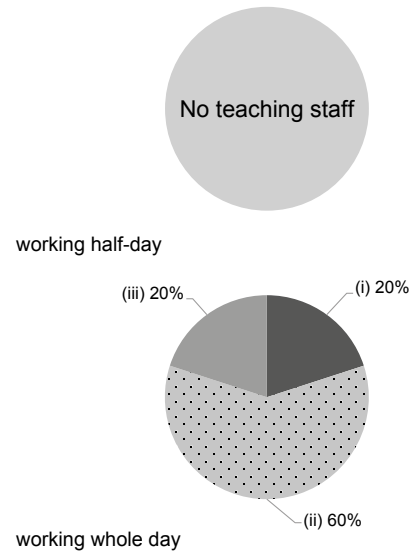
Please refer to the Fees Certificate for details of fees information.

Child Care Services (Data as of Sept. 2022)			
With child care services for children aged 2-3	Yes	With child care services for children aged under 2	No
Fee level (per annum)	(half - day)	No. of enrolment aged 2-3	12
	\$43,428 (full - day)	Joining Child Care Centre Subsidy Scheme	Yes
Providing occasional child care services	Yes	Providing extended hours services	Yes

Curriculum Details	
Curriculum type : Local	
Curriculum planning	
<p>We pursue "Whole-Brain Learning" models to empower children's multi-sensory learning (visual / auditory / tactile / olfactory / gustatory and other senses) during the golden period of children's rapid brain development from the age of 0 to 6. Through Learning Through Life and Learning By Doing, children will find learning fun and meaningful and hence learn more efficiently.</p> <p>We will follow the "Kindergarten Education Curriculum Guide" (2017) to plan curriculum. Children of nursery classes will not be asked to write, and there will not be mechanical copying exercises and drills on calculation.</p>	
Learning / Teaching approach & activities	
<p>Our school chooses children's favorite medium – story - to implement comprehensive teaching, and guides them to discuss on a wide range of themes related to their life by using theme-based stories. Considering children's interest and with the help of our teachers, we develop and design interesting extended activities, and facilitate active honest communication and emotional exchange between children. We are committed to make learning more interesting and impressive.</p>	
Assessment of children's learning experiences	
<p>We build a portfolio for each student to record the development progress. We also provide summative assessment to comprehensively assess their abilities and performance at the end of the term.</p>	

Monthly salary range of principal & teaching staff
(Data as of Mar. 2023)

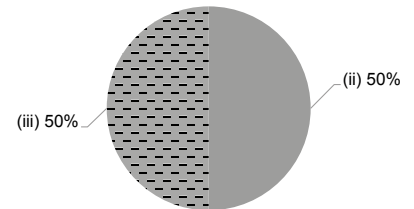
- (i) ≤ \$30,000
- (ii) \$30,001 - \$40,000
- (iii) > \$40,000



School Characteristics	
School vision and mission	
<p>Purpose: In the spirit of Christ's love for others, we provide proper teaching and activities for children and a safe and stimulating learning environment. In doing so, we aim to cultivate in children positive habits and attitudes, and empower them to attain balanced development in physical, emotional, social, language, intellectual, and many other aspects. Vision: In the love of Christ, we seek to make every child confident, kind, happy and healthy.</p>	
Support to students	
<p>New Students Adaption Period, Teachers' Home Visits, P.1 Admission Adaption, school social workers and partnerships with churches to strengthen children's moral development; Contact with community agencies to provide referral services to children in need.</p>	
Support to non-Chinese speaking (NCS) students	
<p>Engage NCS parent volunteers to enhance communication between school and parents; create an enriched language environment for mastery of the Chinese language; create an inclusive learning environment to facilitate students' integration; facilitate professional development for teachers to develop effective strategies to help NCS students learn Chinese.</p>	
Support to students with special needs	
<p>Joining the On-site Pre-school Rehabilitation Services. There is Integrated Programme, which is provided by a dedicated teacher to provide professional counseling and appropriate referrals for children in need</p>	
Link with parents	
Parent-teacher association : No	
Other activities / communication with parents	
<p>Parents' Day, Parent-Child School Picnics, Parent-Child Workshops, Parent Volunteers, Parties, as well as regular announcement / newsletters and websites, etc.</p>	

Working experience of principal & teaching staff in pre-primary education
(Data as of Mar. 2023)

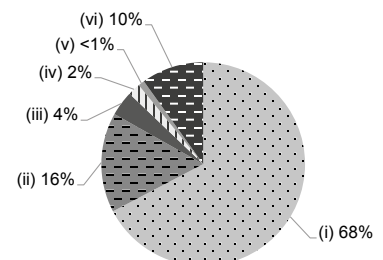
- (i) < 4 years
- (ii) 4 - 7 years
- (iii) > 7 years



2021/22 School Expenditure Information

Expenditure information based on audited account Yes

- (i) salary of principal & teaching staff
- (ii) non-teaching staff salary
- (iii) rent, management fees, rates & government rent
- (iv) teaching resources
- (v) staff training & professional development
- (vi) other expenses



Price of Major School Items (2022 / 23 School Year)			
Summer uniform	\$100 / set	Winter uniform	\$170 / set
School bag	\$90 / each	Tea and snacks	\$0 / year
Textbooks	\$128-435 / year	Exercise books/ workbooks	\$0 / year
Stationery	\$0 / year	Bedding items	No such item