



# HONG KONG YOUNG WOMEN'S CHRISTIAN ASSOCIATION ON TING NURSERY SCHOOL

Tuen Mun

Address : 5/F & ROOF PLAYGROUND, ON TING / YAU OI COMMUNITY CENTRE, ON TING ESTATE, TUEN MUN, NEW TERRITORIES

Tel. : 2458 0578

Fax. : 2458 0339

Joining  
2023/24 KG Education Scheme

School No. 562904

Location No. 0001

School Information	
School Category	Non-profit-making
Student Category	Co-educational
Name of School Supervisor	MS TSE SHUK IN
Name of School Principal	MS KWAN YEE MAN
School Founding Year	1983
Total No. of Permitted Accommodation of Classrooms in Use (Data as of Sept. 2022)	76
Number of Registered Classrooms	3
Outdoor Playground	Yes
Indoor Playground	Yes
Music Room	Yes
Other Special Room(s) / Area(s)	No
Total No. of Principal & Teaching Staff (Data as of Sept. 2022) *	10
School Website	<a href="http://nsot.ywca.org.hk">http://nsot.ywca.org.hk</a>
Quality Review : Result and Report	Meeting the prescribed standards <a href="https://www.edb.gov.hk/attachment/tc/edu-system/preprimary-kindergarten/quality-assurance-frame-work/qr/qr-report/HKYWCA_OnTing.pdf">https://www.edb.gov.hk/attachment/tc/edu-system/preprimary-kindergarten/quality-assurance-frame-work/qr/qr-report/HKYWCA_OnTing.pdf</a>

No. & Qualification of Principal & Teaching Staff (Data as of Sept. 2022) *	
Academic Qualification	
Degree holders	7
Non-degree holders	3
Professional Qualification	
C(ECE) or above	10
Qualified KG teachers	0
Other teacher trainings	0
Qualified assistant KG teachers	0
Others	0

\* Excluding staff serving aged 0-2

Teacher to Pupil Ratio (Data as of Sept. 2022)	
Teacher to pupil ratio in morning session	1 : 7.8
Teacher to pupil ratio in afternoon session	1 : 7.8
Ratio includes classes aged 2-3	Yes

No. of Enrolment (Data as of Sept. 2022)				
	Nursery	Lower KG	Upper KG	Total
AM Session	0	0	0	0
PM Session	0	0	0	0
WD Session	23	16	27	66

Annual Fees (2023 / 24 School Year)				
		Nursery	Lower KG	Upper KG
Annual Fees After Deduction of Government Subsidy (No. of Instalment)	AM Session	-	-	-
	PM Session	-	-	-
	WD Session	\$9,552 (12)	\$9,552 (12)	\$9,552 (12)

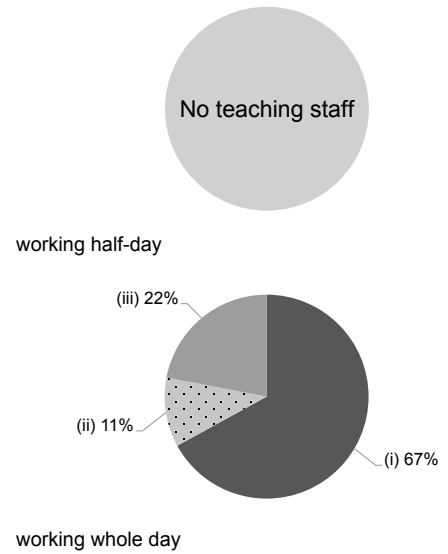
Please refer to the Fees Certificate for details of fees information.

Child Care Services (Data as of Sept. 2022)			
With child care services for children aged 2-3	Yes	With child care services for children aged under 2	No
Fee level (per annum)	(half - day)	No. of enrolment aged 2-3	12
	\$45,264 (full - day)	Joining Child Care Centre Subsidy Scheme	Yes
Providing occasional child care services	Yes	Providing extended hours services	Yes

Curriculum Details	
Curriculum type : Local	
Curriculum planning	
<p>In accordance with the, we offer a holistic, balanced, child-centered curriculum that caters to children's interests, abilities and needs. It covers six major areas: "Self and Society", "Nature and Living", "Physical Fitness and Health", "Arts and Creativity", "Language" and "Early Childhood Mathematics". Through diversified learning activities and daily practices, children develop knowledge, life skills and good habits.</p> <p>We will follow the "Kindergarten Education Curriculum Guide" (2017) to plan curriculum. Children of nursery classes will not be asked to write, and there will not be mechanical copying exercises and drills on calculation.</p>	
Learning / Teaching approach & activities	
<p>We teach children by adopting an theme-based approach and real life education. Class-, group- and individual-based inquiry activities, free-play area or learning corners are arranged to improve children's learning initiative and problem-solving ability by "Learning through Play". We engage full-time English and Mandarin teachers, and teach children by organizing games, to help them lay a solid foundation for biliterate and trilingual learning. Focusing on moral education, we take picture books-based stories associated with different themes as an entry point, and guide children to discuss on life education in a progressive way, to cultivate in them a positive value and a good moral character.</p>	
Assessment of children's learning experiences	
<p>We assess children's development in all aspects through continuous observations and records of children's performance and abilities and systematically develop "Children's Learning and Development Portfolios".</p>	

Monthly salary range of principal & teaching staff (Data as of Mar. 2023)

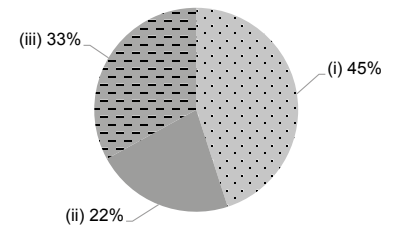
- (i) ≤ \$30,000
- (ii) \$30,001 - \$40,000
- (iii) > \$40,000



School Characteristics	
School vision and mission	
<p>In the spirit and the love of Christ, we are committed to children's all-round development in moral, intellectual, physical, social, aesthetic and spiritual areas.</p>	
Support to students	
<p>New Students Adaption Period, P.1 Adaption activities, Balance Team, school social worker services, partnerships with community groups and middle and primary schools, etc. Broadening children's horizons and enriching their life and learning experience through community engagement. K.2 and K.3 students' parents learn a set of specific parent-child reading skills through the "Love Reading, Reading More" Program to cultivate children's reading interests and habits and understanding ability. This can help the students deal with learning different subjects after being admitted to primary school.</p>	
Support to non-Chinese speaking (NCS) students	
No information	
Support to students with special needs	
Joining the On-site Pre-school Rehabilitation Services.	
Link with parents	
Parent-teacher association : Yes	
Other activities / communication with parents	
<p>We offer "Family"-centered services, and value parent-school collaboration in a bid to collectively create a harmonious family. The school regularly holds Parents' Meetings, a Volunteer Team, Parent-Child Team, Parents' Class Visits, Parental Seminars, Parent-Child Sports Days and Parent-Child Resource Center to promote mutual communication and enhance parents' parenting skills. And the school social workers are willing to communicate with parents, and hold workshops on a regular basis and provide appropriate support.</p>	

Working experience of principal & teaching staff in pre-primary education (Data as of Mar. 2023)

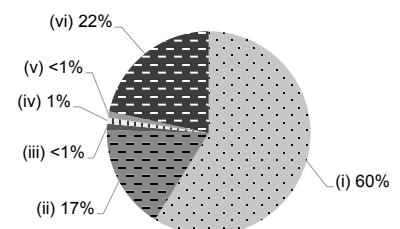
- (i) < 4 years
- (ii) 4 - 7 years
- (iii) > 7 years



2021/22 School Expenditure Information

Expenditure information based on audited account Yes

- (i) salary of principal & teaching staff
- (ii) non-teaching staff salary
- (iii) rent, management fees, rates & government rent
- (iv) teaching resources
- (v) staff training & professional development
- (vi) other expenses



Price of Major School Items (2022 / 23 School Year)			
Summer uniform	\$355 / set	Winter uniform	\$730 / set
School bag	\$114 / each	Tea and snacks	No such item
Textbooks	\$683-757 / year	Exercise books/ workbooks	\$0 / year
Stationery	\$0 / year	Bedding items	\$350 / set