



CUHK FAA CHAN CHUN HA KINDERGARTEN

Yuen Long

Address : KINDERGARTEN 1, ROOF FLOOR, TIN YAN SHOPPING CENTRE, TIN YAN ESTATE, TIN SHUI WAI, NEW TERRITORIES

Tel. : 2254 4668

Fax. : 2254 4633

Joining
2023/24 KG Education Scheme

School No. 560740

Location No. 0001

School Information	
School Category	Non-profit-making
Student Category	Co-educational
Name of School Supervisor	MR NGAI MAN FU
Name of School Principal	MS SHUM MAN LING
School Founding Year	2004
Total No. of Permitted Accommodation of Classrooms in Use (Data as of Sept. 2022)	130
Number of Registered Classrooms	6
Outdoor Playground	Yes
Indoor Playground	Yes
Music Room	Yes
Other Special Room(s) / Area(s)	JELIC Multiple Intelligence teaching room, Sensory area, Training room, Reading area, Gross-motor activities area
Total No. of Principal & Teaching Staff (Data as of Sept. 2022) *	14
School Website	https://www.cchk.edu.hk
Quality Review : Result and Report	Meeting the prescribed standards https://www.edb.gov.hk/attachment/tc/edu-system/primary-kindergarten/quality-assurance-frame-work/qr/qr-report/CUHKFAA_ChunChunHa.pdf

No. & Qualification of Principal & Teaching Staff (Data as of Sept. 2022) *	
Academic Qualification	
Degree holders	8
Non-degree holders	6
Professional Qualification	
C(ECE) or above	14
Qualified KG teachers	0
Other teacher trainings	0
Qualified assistant KG teachers	0
Others	0

* Excluding staff serving aged 0-2

Teacher to Pupil Ratio (Data as of Sept. 2022)	
Teacher to pupil ratio in morning session	1 : 7.0
Teacher to pupil ratio in afternoon session	1 : 7.7
Ratio includes classes aged 2-3	No

No. of Enrolment (Data as of Sept. 2022)				
	Nursery	Lower KG	Upper KG	Total
AM Session	7	8	14	29
PM Session	0	0	0	0
WD Session	17	21	31	69

Annual Fees (2023 / 24 School Year)				
		Nursery	Lower KG	Upper KG
Annual Fees After Deduction of Government Subsidy (No. of Instalment)	AM Session	Free	Free	Free
	PM Session	Free	Free	Free
	WD Session	\$4,200 (10)	\$4,200 (10)	\$4,200 (10)

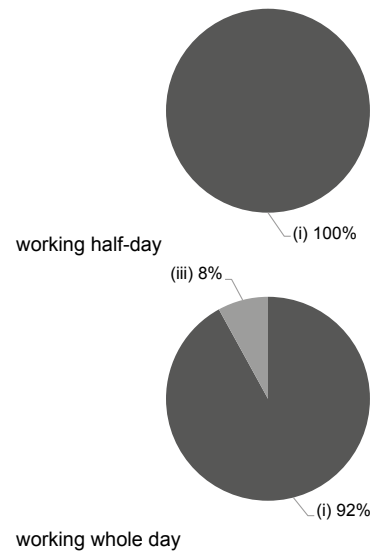
Please refer to the Fees Certificate for details of fees information.

Child Care Services (Data as of Sept. 2022)			
With child care services for children aged 2-3	-	With child care services for children aged under 2	-
Fee level (per annum)	(half - day)	No. of enrolment aged 2-3	0
	(full - day)	Joining Child Care Centre Subsidy Scheme	-
Providing occasional child care services	-	Providing extended hours services	-

Curriculum Details	
Curriculum type : Local	
Curriculum planning	
<p>The curriculum takes into consideration physical and psychological development and learning interests of children. Diversified and all-round ways of teaching are adopted to broaden children's horizon, stimulate their want to learn and cultivate voluntary, self-directed learning attitude.</p> <p>We will follow the "Kindergarten Education Curriculum Guide" (2017) to plan curriculum. Children of nursery classes will not be asked to write, and there will not be mechanical copying exercises and drills on calculation.</p>	
Learning / Teaching approach & activities	
<p>Activity-based approach, group learning, outdoor exploration, site visits, group reporting, sharing of designs and JELIC multiple intelligences classroom.</p>	
Assessment of children's learning experiences	
<p>Ongoing observation of learning, assessments of theme-based learning, individual observation.</p>	

Monthly salary range of principal & teaching staff (Data as of Mar. 2023)

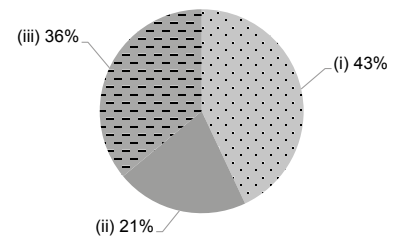
- (i) ≤ \$30,000
- (ii) \$30,001 - \$40,000
- (iii) > \$40,000



School Characteristics	
School vision and mission	
<p>We operate in line with CUHK's motto of 'through learning and temperance to virtue'. We respect every child and discover and develop his or her potential.</p>	
Support to students	
<p>New student adaptation team; open the campus scheme; social worker support services; kindergarten under English language improvement scheme of the Standing Committee on Language Education and Research; site visits; course for healthy emotion of children; physical fitness specialists; multiple intelligences extra-curricular activity team; primary one practice lessons; support from and cooperation with community organizations.</p>	
Support to non-Chinese speaking (NCS) students	
<p>Received Grant for Support to NCS Students; arrange interpretation / translation services; engage NCS parent volunteers to enhance communication between school and parents; create an enriched language environment for mastery of the Chinese language; create an inclusive learning environment to facilitate students' integration.</p>	
Support to students with special needs	
<p>Joining the On-site Pre-school Rehabilitation Services. The Boys' & Girls' Clubs Association of Hong Kong - The Boys' & Girls' Clubs Association of Hong Kong - "SMILE" On-site Pre-school Integrated Services</p>	
Link with parents	
Parent-teacher association : Yes	
Other activities / communication with parents	
<p>Open the campus scheme; parent-child orientation and adaptation week; story mama; parent volunteer teams; tea gatherings for parents; class observation of parents; parents day; parent-child hiking; parent-child library reading schemes; parent-child sports day; parent-child physical fitness and games day; parents workshops; seminars for parents; classes for parents; parents sharing groups; handiwork classes for parents.</p>	

Working experience of principal & teaching staff in pre-primary education (Data as of Mar. 2023)

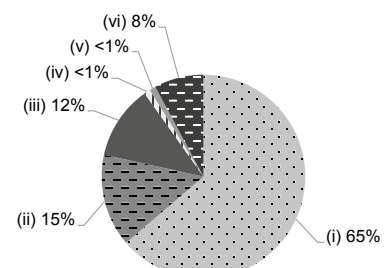
- (i) < 4 years
- (ii) 4 - 7 years
- (iii) > 7 years



2021/22 School Expenditure Information

Expenditure information based on audited account Yes

- (i) salary of principal & teaching staff
- (ii) non-teaching staff salary
- (iii) rent, management fees, rates & government rent
- (iv) teaching resources
- (v) staff training & professional development
- (vi) other expenses



Price of Major School Items (2022 / 23 School Year)			
Summer uniform	\$426 / set	Winter uniform	\$856 / set
School bag	\$109 / each	Tea and snacks	\$400 / year
Textbooks	\$1,684-1,854 / year	Exercise books/ workbooks	\$250-260 / year
Stationery	\$270 / year	Bedding items	No such item