



BUDDHIST CHUN YUE KINDERGARTEN (TUNG CHUNG)

Islands

Address : KINDERGARTEN 5, 2/F, YAT TUNG SHOPPING CENTRE,
TUNG CHUNG, NEW TERRITORIES

Tel. : 2432 2088

Fax. : 2109 4866

Joining
2023/24 KG Education Scheme

School No. 556220

Location No. 0001

School Information	
School Category	Non-profit-making
Student Category	Co-educational
Name of School Supervisor	VEN SIK YIN CHI
Name of School Principal	MS IP PO SHAN
School Founding Year	2003
Total No. of Permitted Accommodation of Classrooms in Use (Data as of Sept. 2022)	228
Number of Registered Classrooms	8
Outdoor Playground	Yes
Indoor Playground	Yes
Music Room	Yes
Other Special Room(s) / Area(s)	Multiple Intelligence Playground, Intellectual Playground, Dancing room
Total No. of Principal & Teaching Staff (Data as of Sept. 2022) *	20
School Website	http://www.bcykgtc.edu.hk
Quality Review : Result and Report	Meeting the prescribed standards https://www.edb.gov.hk/attachment/en/edu-system/preprimary-kindergarten/quality-assurance-frame-work/qr/qr-report/Buddhist_ChunYue_TungChung.pdf

No. & Qualification of Principal & Teaching Staff (Data as of Sept. 2022) *	
Academic Qualification	
Degree holders	8
Non-degree holders	12
Professional Qualification	
C(ECE) or above	20
Qualified KG teachers	0
Other teacher trainings	0
Qualified assistant KG teachers	0
Others	0

* Excluding staff serving aged 0-2

Teacher to Pupil Ratio (Data as of Sept. 2022)	
Teacher to pupil ratio in morning session	1 : 9.6
Teacher to pupil ratio in afternoon session	1 : 5.5
Ratio includes classes aged 2-3	Yes

No. of Enrolment (Data as of Sept. 2022)				
	Nursery	Lower KG	Upper KG	Total
AM Session	34	42	35	111
PM Session	0	0	0	0
WD Session	20	35	26	81

Annual Fees (2023 / 24 School Year)				
		Nursery	Lower KG	Upper KG
Annual Fees After Deduction of Government Subsidy (No. of Instalment)	AM Session	Free	Free	Free
	PM Session	Free	Free	Free
	WD Session	\$6,300 (10)	\$6,300 (10)	\$6,300 (10)

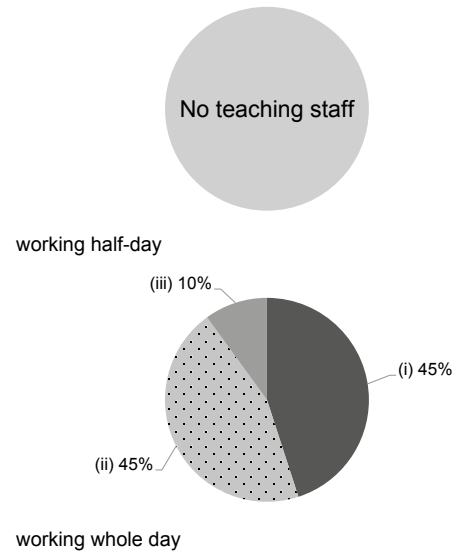
Please refer to the Fees Certificate for details of fees information.

Child Care Services (Data as of Sept. 2022)			
With child care services for children aged 2-3	Yes	With child care services for children aged under 2	No
Fee level (per annum)	\$33,300 (half - day)	No. of enrolment aged 2-3	29
	- (full - day)	Joining Child Care Centre Subsidy Scheme	No
Providing occasional child care services	No	Providing extended hours services	No

Curriculum Details	
Curriculum type : Local	
Curriculum planning	
Use multiple intelligence learning areas for children to extend concepts and to strengthen skills	
We will follow the "Kindergarten Education Curriculum Guide" (2017) to plan curriculum. Children of nursery classes will not be asked to write, and there will not be mechanical copying exercises and drills on calculation.	
Learning / Teaching approach & activities	
Our school enables: Diversified activities; Free play / learning through play; Learning through independent and leadership activities; Incorporating the teaching of arts (arts-based teaching approach)	
Assessment of children's learning experiences	
Create children's learning portfolios (including unit learning assessment and development areas of multiple intelligences report)	

Monthly salary range of principal & teaching staff
(Data as of Mar. 2023)

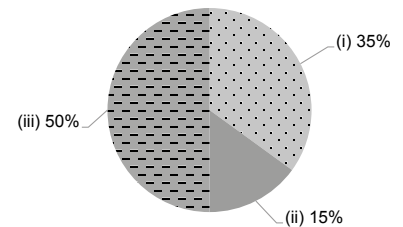
- (i) ≤ \$30,000
- (ii) \$30,001 - \$40,000
- (iii) > \$40,000



School Characteristics	
School vision and mission	
Strive to develop multiple intelligences and potential, to cultivate creativity and initiative to learn.	
Support to students	
Arrange parent-child games sessions for new students with the new environment; Logging for children with special needs; Primary school visits raising their exposure and adaptability; Provide and support education services for NCS parents and students; The school will provide support service, specifically designed for SEN kids.	
Support to non-Chinese speaking (NCS) students	
Received Grant for Support to NCS Students; appoint additional teaching staff / teaching assistants to support NCS students learning Chinese; engage NCS parent volunteers to enhance communication between school and parents; create an enriched language environment for mastery of the Chinese language; create an inclusive learning environment to facilitate students' integration; facilitate professional development for teachers to develop effective strategies to help NCS students learn Chinese; participate in school-based professional support programmes organised by EDB.	
Support to students with special needs	
Joining the On-site Pre-school Rehabilitation Services.	
Link with parents	
Parent-teacher association : Yes	
Other activities / communication with parents	
Interactive talks for parental education, meetings with individual parents; Invite parents to help with learning activities; Parent-child creative work and outings, exhibition of works; Parent-child interest class and parent's talent class, parent communication handbook.	

Working experience of principal & teaching staff in pre-primary education
(Data as of Mar. 2023)

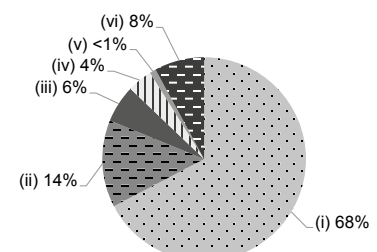
- (i) < 4 years
- (ii) 4 - 7 years
- (iii) > 7 years



2021/22 School Expenditure Information

Expenditure information based on audited account Yes

- (i) salary of principal & teaching staff
- (ii) non-teaching staff salary
- (iii) rent, management fees, rates & government rent
- (iv) teaching resources
- (v) staff training & professional development
- (vi) other expenses



Price of Major School Items (2022 / 23 School Year)			
Summer uniform	\$400 / set	Winter uniform	\$650 / set
School bag	\$93 / each	Tea and snacks	\$390 / year
Textbooks	\$600-1,000 / year	Exercise books/ workbooks	\$400-500 / year
Stationery	\$200-250 / year	Bedding items	\$400 / set