



Islands

# THE CHRISTIAN THE FAITH HOPE LOVE CHURCH YAT TUNG KINDERGARTEN

Joining  
2023/24 KG Education Scheme

Address : KINDERGARTEN 6, 3/F, YAT TUNG SHOPPING CENTRE,  
TUNG CHUNG, NEW TERRITORIES

School No. 554251

Location No. 0001

Tel. : 2109 0198

Fax. : 2109 0813

School Information	
School Category	Non-profit-making
Student Category	Co-educational
Name of School Supervisor	MS LAI SHUK YI SHARON
Name of School Principal	MS WONG WAI LIN
School Founding Year	2003
Total No. of Permitted Accommodation of Classrooms in Use (Data as of Sept. 2022)	168
Number of Registered Classrooms	8
Outdoor Playground	Yes
Indoor Playground	Yes
Music Room	Yes
Other Special Room(s) / Area(s)	Sensory Training Playground, Physical Activity Playground, Faith Hope Love Garden, Visual Art Corridor, Library, STEM Area
Total No. of Principal & Teaching Staff (Data as of Sept. 2022) *	15
School Website	<a href="http://www.yatungkg.edu.hk">http://www.yatungkg.edu.hk</a>
Quality Review : Result and Report	Meeting the prescribed standards <a href="https://www.edb.gov.hk/attachment/en/edu-system/preprimary-kindergarten/quality-assurance-frame-work/qv/qv-report/TCTFHLC_YatTung.pdf">https://www.edb.gov.hk/attachment/en/edu-system/preprimary-kindergarten/quality-assurance-frame-work/qv/qv-report/TCTFHLC_YatTung.pdf</a>

No. & Qualification of Principal & Teaching Staff (Data as of Sept. 2022) *	
Academic Qualification	
Degree holders	9
Non-degree holders	6
Professional Qualification	
C(ECE) or above	15
Qualified KG teachers	0
Other teacher trainings	0
Qualified assistant KG teachers	0
Others	0

\* Excluding staff serving aged 0-2

Teacher to Pupil Ratio (Data as of Sept. 2022)	
Teacher to pupil ratio in morning session	1 : 8.3
Teacher to pupil ratio in afternoon session	1 : 5.6
Ratio includes classes aged 2-3	No

No. of Enrolment (Data as of Sept. 2022)				
	Nursery	Lower KG	Upper KG	Total
AM Session	9	18	19	46
PM Session	0	0	0	0
WD Session	24	29	25	78

Annual Fees (2023 / 24 School Year)				
		Nursery	Lower KG	Upper KG
Annual Fees After Deduction of Government Subsidy (No. of Instalment)	AM Session	Free	Free	Free
	PM Session	Free	Free	Free
	WD Session	\$4,180 (11)	\$4,180 (11)	\$4,180 (11)

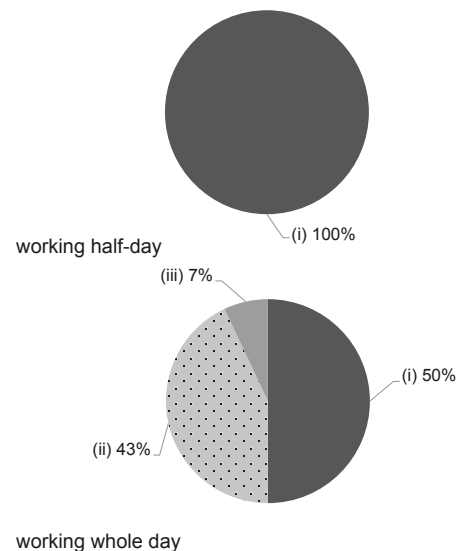
Please refer to the Fees Certificate for details of fees information.

Child Care Services (Data as of Sept. 2022)			
With child care services for children aged 2-3	-	With child care services for children aged under 2	-
Fee level (per annum)	(half - day)	No. of enrolment aged 2-3	0
	(full - day)	Joining Child Care Centre Subsidy Scheme	-
Providing occasional child care services	-	Providing extended hours services	-

Curriculum Details	
Curriculum type : Local	
Curriculum planning	
<p>Using the Kindergarten Education Curriculum Guide of the Education Bureau as our base, our curriculum aims to enhance children's learning interest and creativity. It requires children to explore continuously and practice in the learning process, as learning from practicing is more interesting for children. The six learning areas, including Physical Fitness and Health, Language, Early Childhood Mathematics, Nature and Living, Self and Society and Arts and Creativity, which are integrated into the creative activities to inspire children to learn and to lay a good foundation for future learning.</p> <p>We will follow the "Kindergarten Education Curriculum Guide" (2017) to plan curriculum. Children of nursery classes will not be asked to write, and there will not be mechanical copying exercises and drills on calculation.</p>	
Learning / Teaching approach & activities	
<p>Our child-center teaching framework integrates interesting and meaningful learning. Through observation, inquiry, practice, discussion, experiential learning and other type of activity-oriented environment settings, children can get more involved and learn better.</p>	
Assessment of children's learning experiences	
<p>Adopt on-going observatory assessment, anecdotal logging to observe, assess and record children's developmental situation.</p>	

Monthly salary range of principal & teaching staff  
(Data as of Mar. 2023)

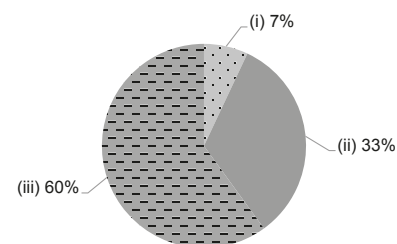
- (i) ≤ \$30,000
- (ii) \$30,001 - \$40,000
- (iii) > \$40,000



School Characteristics	
School vision and mission	
<p>- In accordance with biblical truth, we provide whole person education to attain comprehensive, quality development in the domains of moral, intellectual, physical, social skills, aesthetics and spiritual education - We care Home-School connection. Building up a healthy and good parent-kid relationship is our first priority. - Children can build up a good character by knowing God. - We hope children can grow up with faith, hope and love, they can care about the society and be a good person.</p>	
Support to students	
<p>Incremental class sessions for new students. We carry out moral education to fostering children to build good character. We encourage children to participate in community activities: P.1 school life simulation, parent-child activities, themed visits and talent show.</p>	
Support to non-Chinese speaking (NCS) students	
<p>Received Grant for Support to NCS Students; appoint additional teaching staff / teaching assistants to support NCS students learning Chinese; create an enriched language environment for mastery of the Chinese language; create an inclusive learning environment to facilitate students' integration; collaborate with non-governmental organisations (NGOs) to create an inclusive learning environment; facilitate professional development for teachers to develop effective strategies to help NCS students learn Chinese; participate in school-based professional support programmes organised by EDB.</p>	
Support to students with special needs	
<p>Joining the On-site Pre-school Rehabilitation Services.</p>	
Link with parents	
<p>Parent-teacher association : No</p>	
Other activities / communication with parents	
<p>Class observation, parents' day, Picnic, Mid-Autumn Festival Activity, Christmas party, Chinese New Year Market, Mother's Day Activity</p>	

Working experience of principal & teaching staff in pre-primary education  
(Data as of Mar. 2023)

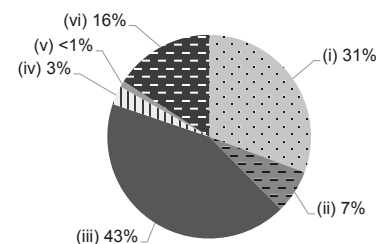
- (i) < 4 years
- (ii) 4 - 7 years
- (iii) > 7 years



2021/22 School Expenditure Information

Expenditure information based on audited account Yes

- (i) salary of principal & teaching staff
- (ii) non-teaching staff salary
- (iii) rent, management fees, rates & government rent
- (iv) teaching resources
- (v) staff training & professional development
- (vi) other expenses



Price of Major School Items (2022 / 23 School Year)

Summer uniform	\$376 / set	Winter uniform	\$561 / set
School bag	\$60 / each	Tea and snacks	\$1,430 / year
Textbooks	\$500 / year	Exercise books/ workbooks	\$376 / year
Stationery	\$200 / year	Bedding items	No such item