



# SHAU KEI WAN METHODIST KINDERGARTEN

Hong Kong  
East

Address : G/F, OI YUK HOUSE, OI TUNG ESTATE, SHAU KEI WAN,  
HONG KONG

Tel. : 3156 2523

Fax. : 3156 1421

Joining  
2023/24 KG Education Scheme

School No. 543357

Location No. 0001

School Information	
School Category	Non-profit-making
Student Category	Co-educational
Name of School Supervisor	REV CHAN TAK CHEONG
Name of School Principal	MS NG CHIU LAN JENNY
School Founding Year	2001
Total No. of Permitted Accommodation of Classrooms in Use (Data as of Sept. 2022)	125
Number of Registered Classrooms	6
Outdoor Playground	No
Indoor Playground	Yes
Music Room	Yes
Other Special Room(s) / Area(s)	No information
Total No. of Principal & Teaching Staff (Data as of Sept. 2022) *	9
School Website	<a href="http://www.skwmk.edu.hk">http://www.skwmk.edu.hk</a>
Quality Review : Result and Report	Meeting the prescribed standards <a href="https://www.edb.gov.hk/attachment/en/edu-system/preprimary-kindergarten/quality-assurance-framework/qr/qr-report/ShauKeiWan_Methodist.pdf">https://www.edb.gov.hk/attachment/en/edu-system/preprimary-kindergarten/quality-assurance-framework/qr/qr-report/ShauKeiWan_Methodist.pdf</a>

No. & Qualification of Principal & Teaching Staff (Data as of Sept. 2022) *	
Academic Qualification	
Degree holders	7
Non-degree holders	2
Professional Qualification	
C(ECE) or above	9
Qualified KG teachers	0
Other teacher trainings	0
Qualified assistant KG teachers	0
Others	0

\* Excluding staff serving aged 0-2

Teacher to Pupil Ratio (Data as of Sept. 2022)	
Teacher to pupil ratio in morning session	1 : 11.4
Teacher to pupil ratio in afternoon session	1 : 8.6
Ratio includes classes aged 2-3	No

No. of Enrolment (Data as of Sept. 2022)				
	Nursery	Lower KG	Upper KG	Total
AM Session	9	14	11	34
PM Session	0	0	0	0
WD Session	17	19	33	69

Annual Fees (2023 / 24 School Year)				
		Nursery	Lower KG	Upper KG
Annual Fees After Deduction of Government Subsidy (No. of Instalment)	AM Session	Free	Free	Free
	PM Session	Free	Free	Free
	WD Session	\$13,222 (11)	\$13,222 (11)	\$13,222 (11)

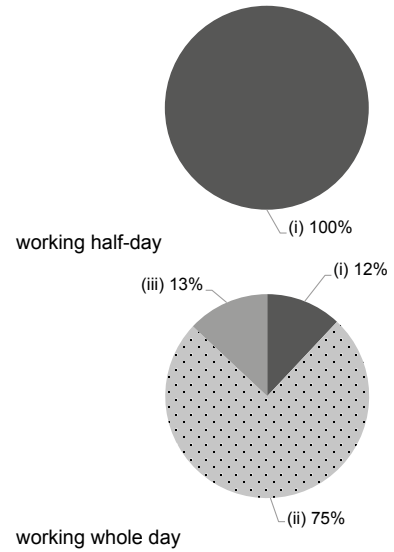
Please refer to the Fees Certificate for details of fees information.

Child Care Services (Data as of Sept. 2022)			
With child care services for children aged 2-3	-	With child care services for children aged under 2	-
Fee level (per annum)	(half - day)	No. of enrolment aged 2-3	0
	(full - day)	Joining Child Care Centre Subsidy Scheme	-
Providing occasional child care services	-	Providing extended hours services	-

Curriculum Details	
Curriculum type : Local	
Curriculum planning	
To set out courses in accordance with children's physical and mental development, coordinate with their learning interest and consolidate their learning with step by step approach.	
We will follow the "Kindergarten Education Curriculum Guide" (2017) to plan curriculum. Children of nursery classes will not be asked to write, and there will not be mechanical copying exercises and drills on calculation.	
Learning / Teaching approach & activities	
Theme and activity teaching, visiting, small group or collective activities and design activities.	
Assessment of children's learning experiences	
To constantly observe and record children's performance and each theme shows their learning progress.	

Monthly salary range of principal & teaching staff (Data as of Mar. 2023)

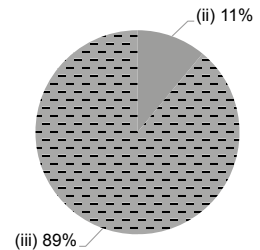
- (i) ≤ \$30,000
- (ii) \$30,001 - \$40,000
- (iii) > \$40,000



School Characteristics	
School vision and mission	
To inherit the Christ spirit, develop the whole-person education, spread gospel and cultivate abundant life.	
Support to students	
The adaptation period of new students, case-by-case children education plan, visiting primary school, cooperation with community agency and home visit.	
Support to non-Chinese speaking (NCS) students	
Received Grant for Support to NCS Students; appoint additional teaching staff / teaching assistants to support NCS students learning Chinese; arrange interpretation / translation services; engage NCS parent volunteers to enhance communication between school and parents; create an enriched language environment for mastery of the Chinese language; create an inclusive learning environment to facilitate students' integration; collaborate with non-governmental organisations (NGOs) to create an inclusive learning environment; facilitate professional development for teachers to develop effective strategies to help NCS students learn Chinese.	
Support to students with special needs	
Joining the On-site Pre-school Rehabilitation Services.	
Link with parents	
Parent-teacher association : Yes	
Other activities / communication with parents	
To hold activities such as parents' day, parents' involvement in classroom observation, parents volunteers, parenting lectures, parent-child games, parent-child travel, opening day, parents' gospel, communication day between teacher and parent, parent-child food & drinks interest classes, parent workshop, parents' corner and parents Christmas worship.	

Working experience of principal & teaching staff in pre-primary education (Data as of Mar. 2023)

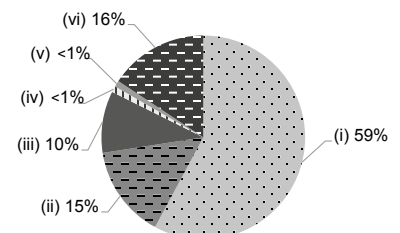
- (i) < 4 years
- (ii) 4 - 7 years
- (iii) > 7 years



2021/22 School Expenditure Information

Expenditure information based on audited account Yes

- (i) salary of principal & teaching staff
- (ii) non-teaching staff salary
- (iii) rent, management fees, rates & government rent
- (iv) teaching resources
- (v) staff training & professional development
- (vi) other expenses



Price of Major School Items (2022 / 23 School Year)			
Summer uniform	\$300-400 / set	Winter uniform	\$750-800 / set
School bag	\$105 / each	Tea and snacks	\$700 / year
Textbooks	\$1,000-1,200 / year	Exercise books/ workbooks	\$500-550 / year
Stationery	\$100-120 / year	Bedding items	\$300-400 / set