



YUEN YUEN KINDERGARTEN (PING TIN ESTATE)

Kwun Tong

Address : G/F, PING SIN HOUSE, PING TIN ESTATE, LAM TIN, KOWLOON

Joining
2023/24 KG Education Scheme

School No. 528366

Location No. 0001

Tel. : 2243 7116

Fax. : 2177 6722

School Information	
School Category	Non-profit-making
Student Category	Co-educational
Name of School Supervisor	MR TANG KAM HUNG
Name of School Principal	MS CHENG YUET LAN
School Founding Year	1998
Total No. of Permitted Accommodation of Classrooms in Use (Data as of Sept. 2022)	148
Number of Registered Classrooms	6
Outdoor Playground	No
Indoor Playground	Yes
Music Room	Yes
Other Special Room(s) / Area(s)	Library, Multi-function room, English activities room
Total No. of Principal & Teaching Staff (Data as of Sept. 2022) *	14
School Website	https://www.yuenyuenkg.edu.hk/pingtin
Quality Review : Result and Report	Meeting the prescribed standards https://www.edb.gov.hk/attachment/en/edu-system/preprimary-kindergarten/quality-assurance-frame-work/qr/qr-report/YY_PingTin.pdf

No. & Qualification of Principal & Teaching Staff (Data as of Sept. 2022) *	
Academic Qualification	
Degree holders	13
Non-degree holders	1
Professional Qualification	
C(ECE) or above	14
Qualified KG teachers	0
Other teacher trainings	0
Qualified assistant KG teachers	0
Others	0

* Excluding staff serving aged 0-2

Teacher to Pupil Ratio (Data as of Sept. 2022)	
Teacher to pupil ratio in morning session	1 : 10.3
Teacher to pupil ratio in afternoon session	1 : 7.9
Ratio includes classes aged 2-3	Yes

No. of Enrolment (Data as of Sept. 2022)				
	Nursery	Lower KG	Upper KG	Total
AM Session	16	17	20	53
PM Session	0	0	0	0
WD Session	30	27	30	87

Annual Fees (2023 / 24 School Year)				
		Nursery	Lower KG	Upper KG
Annual Fees After Deduction of Government Subsidy (No. of Instalment)	AM Session	Free	Free	Free
	PM Session	Free	Free	Free
	WD Session	\$9,867 (11)	\$9,867 (11)	\$9,867 (11)

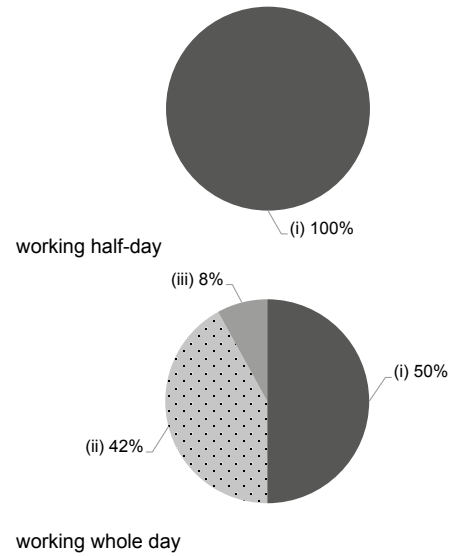
Please refer to the Fees Certificate for details of fees information.

Child Care Services (Data as of Sept. 2022)			
With child care services for children aged 2-3	Yes	With child care services for children aged under 2	No
Fee level (per annum)	\$32,780 (half - day)	No. of enrolment aged 2-3	4
	- (full - day)	Joining Child Care Centre Subsidy Scheme	No
Providing occasional child care services	No	Providing extended hours services	No

Curriculum Details	
Curriculum type : Local	
Curriculum planning	
<p>Our kindergarten takes "child-oriented" as the core value of the curriculum, it is planned in accordance with children's physical and mental development and learning interests. Our school employs school-based English teachers and Putonghua teachers to promote the language development in both Chinese and English, to develop children to be biliterate and trilingual, and we adopt Operational and Integrated Mathematical Learning in Preschools (OIMLP) and online learning platforms to inspire children's logical thinking, to develop the basic concepts in mathematics and technology. In addition, the school attaches great importance to the cultivation of children's moral character, we educate children to cultivate positive values and the correct attitude to get along with others by using picture books as a teaching tool. Through systematic and physical fitness courses that are suitable for children's development, they can develop children's muscular capacity and build interest and confidence in sports. In order to cultivate children's imagination, creativity and communication skills, our kindergarten also has diverse and interesting art creation, display and appreciation activities.</p> <p>We will follow the "Kindergarten Education Curriculum Guide" (2017) to plan curriculum. Children of nursery classes will not be asked to write, and there will not be mechanical copying exercises and drills on calculation.</p>	
Learning / Teaching approach & activities	
<p>In order to ensure children to have a comprehensive and balanced development, our kindergarten adopts a theme that is daily-life oriented, designing a variety of sensory learning activities in an integrated mode, supplemented by game teaching strategies, and presenting them through different learning forms and activities, such as story creation, English drama, and moral education theater, role-playing, dance performances, natural science exploration, etc. At the same time, we conduct community exploration with children, and provide a fun learning experience through visits, community services, uniform groups, etc.</p>	
Assessment of children's learning experiences	
<p>Establish children's growing up files to collect diversified assessment models and data collection, such as ongoing observation records, assessment forms, work analysis. These are used to record children's performance and progress in cognition, physical fitness, affection and social abilities as well as aesthetic culture, and we have evaluations from teachers and parents together with children's feedback which are critical for comprehensive and systematic analysis for their overall development.</p>	

Monthly salary range of principal & teaching staff (Data as of Mar. 2023)

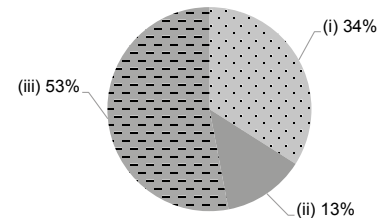
- (i) ≤ \$30,000
- (ii) \$30,001 - \$40,000
- (iii) > \$40,000



School Characteristics	
School vision and mission	
<p>Our mission is to provide a holistic education based on Taoism, placing equal emphasis on students' moral, intellectual, physical, social and aesthetic development. In accordance with our motto "Grasp Principles, Cultivate Virtues", we are dedicated to helping students develop moral integrity and academic excellence.</p>	
Support to students	
<p>We provide contingency fund scheme, parent-child adaptation classes, K.3 Primary School Experience Week, pluralistic learning groups, and a school social worker.</p>	
Support to non-Chinese speaking (NCS) students	
<p>Received Grant for Support to NCS Students; Schools have teachers to support non-Chinese speaking children to learn Chinese. Through community visits and interpretation services, we encourage and support non-Chinese speaking students and their families to integrate into school life and society.</p>	
Support to students with special needs	
<p>Joining the On-site Pre-school Rehabilitation Services. Our school has participated in the "On-site Preschool Rehabilitation Services Scheme" which was organized by Yang Memorial Methodist Social Service, the Scheme holds an early intervention to children with needs to develop and they also provide support to parents in fostering positive attitude and developing effective skills in raising their children.</p>	
Link with parents	
Parent-teacher association : Yes	
Other activities / communication with parents	
<p>We organize many family activities for parents and children. We also have regular parent education activities, P. T. A., and a team of parent volunteers. Parents' meeting are held twice a year.</p>	

Working experience of principal & teaching staff in pre-primary education (Data as of Mar. 2023)

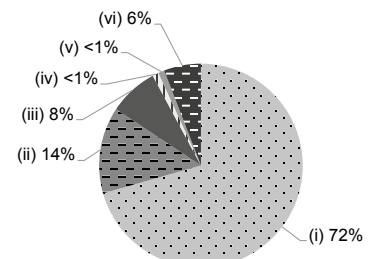
- (i) < 4 years
- (ii) 4 - 7 years
- (iii) > 7 years



2021/22 School Expenditure Information

Expenditure information based on audited account Yes

- (i) salary of principal & teaching staff
- (ii) non-teaching staff salary
- (iii) rent, management fees, rates & government rent
- (iv) teaching resources
- (v) staff training & professional development
- (vi) other expenses



Price of Major School Items (2022 / 23 School Year)

Summer uniform	\$256-405 / set	Winter uniform	\$563-577 / set
School bag	\$128 / each	Tea and snacks	\$500 / year
Textbooks	\$589-1,479 / year	Exercise books/ workbooks	\$183-402 / year
Stationery	\$307-357 / year	Bedding items	\$1,100 / set