



Southern

TWGHs TIN WAN (1996 - 1997 DIRECTORS) KINDERGARTEN

Address : UNIT 1-10 G/F, TIN KIN HOUSE, TIN WAN ESTATE,
ABERDEEN, HONG KONG

Tel. : 2538 5867

Fax. : 2538 8007

Joining
2023/24 KG Education Scheme

School No. 528161

Location No. 0001

School Information	
School Category	Non-profit-making
Student Category	Co-educational
Name of School Supervisor	MS TANG MING WAI
Name of School Principal	MS YEUNG SIU FONG
School Founding Year	1998
Total No. of Permitted Accommodation of Classrooms in Use (Data as of Sept. 2022)	251
Number of Registered Classrooms	6
Outdoor Playground	No
Indoor Playground	Yes
Music Room	Yes
Other Special Room(s) / Area(s)	computer room and art gallery
Total No. of Principal & Teaching Staff (Data as of Sept. 2022) *	16
School Website	http://twghtwkg.edu.hk
Quality Review : Result and Report	Meeting the prescribed standards https://www.edb.gov.hk/attachment/tc/edu-system/preprimary-kindergarten/quality-assurance-frame-work/qr/qr-report/TWGH_TinWan.pdf

No. & Qualification of Principal & Teaching Staff (Data as of Sept. 2022) *	
Academic Qualification	
Degree holders	8
Non-degree holders	8
Professional Qualification	
C(ECE) or above	16
Qualified KG teachers	0
Other teacher trainings	0
Qualified assistant KG teachers	0
Others	0

* Excluding staff serving aged 0-2

Teacher to Pupil Ratio (Data as of Sept. 2022)	
Teacher to pupil ratio in morning session	1 : 10.4
Teacher to pupil ratio in afternoon session	1 : 7.8
Ratio includes classes aged 2-3	No

No. of Enrolment (Data as of Sept. 2022)				
	Nursery	Lower KG	Upper KG	Total
AM Session	40	37	37	114
PM Session	10	21	25	56
WD Session	15	19	19	53

Annual Fees (2023 / 24 School Year)				
		Nursery	Lower KG	Upper KG
Annual Fees After Deduction of Government Subsidy (No. of Instalment)	AM Session	Free	Free	Free
	PM Session	Free	Free	Free
	WD Session	\$13,200 (10)	\$13,200 (10)	\$13,200 (10)

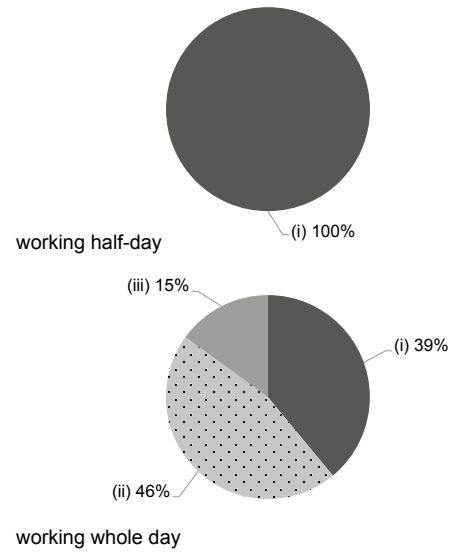
Please refer to the Fees Certificate for details of fees information.

Child Care Services (Data as of Sept. 2022)			
With child care services for children aged 2-3	-	With child care services for children aged under 2	-
Fee level (per annum)	(half - day)	No. of enrolment aged 2-3	0
	(full - day)	Joining Child Care Centre Subsidy Scheme	-
Providing occasional child care services	-	Providing extended hours services	-

Curriculum Details	
Curriculum type : Local	
Curriculum planning	
<p>Themes are designed with various teaching approaches. - All-language as approach of the curriculum. - To promote the reading culture. - Native-speaking teachers are arranged in interest activities for children. - Physical fitness and artistic development are emphasized.</p> <p>We will follow the "Kindergarten Education Curriculum Guide" (2017) to plan curriculum. Children of nursery classes will not be asked to write, and there will not be mechanical copying exercises and drills on calculation.</p>	
Learning / Teaching approach & activities	
<p>Activity-based, project-based and integrated story-based approaches are adopted. Exploration is emphasized, and extended activities are designed according to the theme of development, so that children foster good habits, understand things around them and develop perception through all kinds of life experiences, sensory touch, site visits, friendly visits and observation. Various interest activities are organized to stimulate children to bring into play their potentials.</p>	
Assessment of children's learning experiences	
<p>Children's performance is evaluated by way of ongoing observation.</p>	

Monthly salary range of principal & teaching staff
(Data as of Mar. 2023)

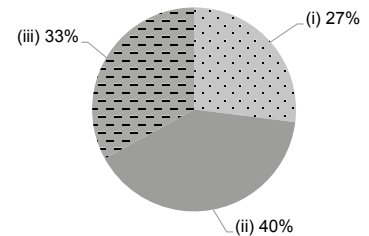
- (i) ≤ \$30,000
- (ii) \$30,001 - \$40,000
- (iii) > \$40,000



School Characteristics	
School vision and mission	
<p>To offer 'holistic education' so balanced academic and non-academic achievements are attained. Children are fostered to develop concern for others, self-confidence, curiosity, willingness and creativity to lay sound foundation for future learning and make good preparations for life.</p>	
Support to students	
<p>Adaptation activities for new students. - 'Primary one adaptation' activities for K3 students. - Funds are set up to provide subsidies for students of all schools under us to develop their potentials.</p>	
Support to non-Chinese speaking (NCS) students	
<p>Received Grant for Support to NCS Students; appoint additional teaching staff / teaching assistants to support NCS students learning Chinese; arrange interpretation / translation services; engage NCS parent volunteers to enhance communication between school and parents; create an enriched language environment for mastery of the Chinese language; create an inclusive learning environment to facilitate students' integration; collaborate with non-governmental organisations (NGOs) to create an inclusive learning environment; facilitate professional development for teachers to develop effective strategies to help NCS students learn Chinese; participate in school-based professional support programmes organised by EDB.</p>	
Support to students with special needs	
<p>Joining the On-site Pre-school Rehabilitation Services.</p>	
Link with parents	
<p>Parent-teacher association : Yes</p>	
Other activities / communication with parents	
<p>Regular seminars for parents. - Gatherings for parents. - Parents volunteering in activities. - Regular publication of school newsletters.</p>	

Working experience of principal & teaching staff in pre-primary education
(Data as of Mar. 2023)

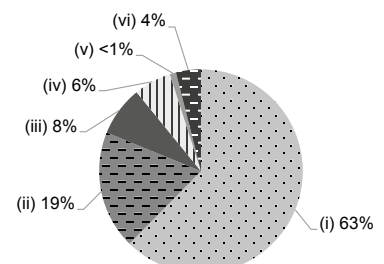
- (i) < 4 years
- (ii) 4 - 7 years
- (iii) > 7 years



2021/22 School Expenditure Information

Expenditure information based on audited account Yes

- (i) salary of principal & teaching staff
- (ii) non-teaching staff salary
- (iii) rent, management fees, rates & government rent
- (iv) teaching resources
- (v) staff training & professional development
- (vi) other expenses



Price of Major School Items (2022 / 23 School Year)			
Summer uniform	\$78-98 / set	Winter uniform	\$226-270 / set
School bag	\$80 / each	Tea and snacks	\$600 / year
Textbooks	No such item	Exercise books/ workbooks	\$700 / year
Stationery	No such item	Bedding items	No such item