



SUN ISLAND ENGLISH KINDERGARTEN (SAI KUNG BRANCH)

Sai Kung

Address : G/F, TOWER 11, G/F, LAKESIDE GARDEN, 1 CHUI TONG ROAD, SAI KUNG, NEW TERRITORIES

Joining
2023/24 KG Education Scheme

School No. 525731

Tel. : 2339 1145

Fax. : 2834 3322

Location No. 0001

School Information	
School Category	Non-profit-making
Student Category	Co-educational
Name of School Supervisor	MISS CHAN WING KI
Name of School Principal	MS NG SAU MAN
School Founding Year	2000
Total No. of Permitted Accommodation of Classrooms in Use (Data as of Sept. 2022)	205
Number of Registered Classrooms	5
Outdoor Playground	Yes
Indoor Playground	Yes
Music Room	Yes
Other Special Room(s) / Area(s)	Role Play Area, Blocks Building Area, Reading Area
Total No. of Principal & Teaching Staff (Data as of Sept. 2022) *	12
School Website	http://www.sunisland.edu.hk
Quality Review : Result and Report	Meeting the prescribed standards https://www.edb.gov.hk/attachment/tc/edu-system/preprimary-kindergarten/quality-assurance-frame-work/qr/qr-report/SI_SaiKung.pdf

No. & Qualification of Principal & Teaching Staff (Data as of Sept. 2022) *	
Academic Qualification	
Degree holders	4
Non-degree holders	8
Professional Qualification	
C(ECE) or above	12
Qualified KG teachers	0
Other teacher trainings	0
Qualified assistant KG teachers	0
Others	0

* Excluding staff serving aged 0-2

Teacher to Pupil Ratio (Data as of Sept. 2022)	
Teacher to pupil ratio in morning session	1 : 10.1
Teacher to pupil ratio in afternoon session	1 : 4.8
Ratio includes classes aged 2-3	No

No. of Enrolment (Data as of Sept. 2022)				
	Nursery	Lower KG	Upper KG	Total
AM Session	32	24	35	91
PM Session	6	7	5	18
WD Session	9	10	11	30

Annual Fees (2023 / 24 School Year)				
		Nursery	Lower KG	Upper KG
Annual Fees After Deduction of Government Subsidy (No. of Instalment)	AM Session	Free	Free	Free
	PM Session	Free	Free	Free
	WD Session	\$7,416 (12)	\$7,416 (12)	\$7,416 (12)

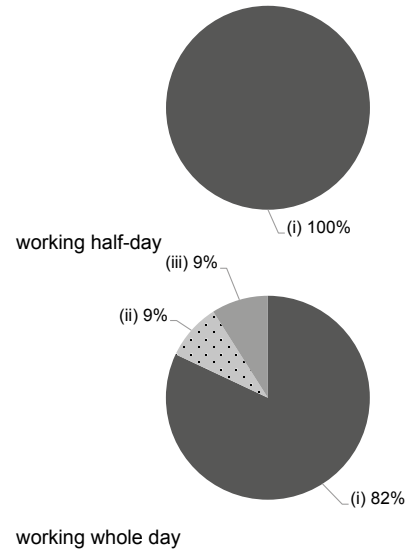
Please refer to the Fees Certificate for details of fees information.

Child Care Services (Data as of Sept. 2022)			
With child care services for children aged 2-3	-	With child care services for children aged under 2	-
Fee level (per annum)	(half - day)	No. of enrolment aged 2-3	0
	(full - day)	Joining Child Care Centre Subsidy Scheme	-
Providing occasional child care services	-	Providing extended hours services	-

Curriculum Details	
Curriculum type : Local	
Curriculum planning	
<p>The curriculum aims at achieving a well balanced development in the five major developmental areas, i.e. Physical Development, Cognitive Development, Language Development, Affective & Social Development and Aesthetic & Cultural Development. Our curriculum is composed of different Learning Themes which are related to the daily life experiences of the children. Bi-literacy and tri-lingualism, mathematics, physical fitness, science, personal development, social skills and art are integrated in the learning areas of class activities.</p> <p>We will follow the "Kindergarten Education Curriculum Guide" (2017) to plan curriculum. Children of nursery classes will not be asked to write, and there will not be mechanical copying exercises and drills on calculation.</p>	
Learning / Teaching approach & activities	
<p>Activity-based approach; group activities; activities led by English-speaking teachers; project-based activities, off-campus visits; reading programmes; parent-child activities, participation in activities and competitions organized by external organizations.</p>	
Assessment of children's learning experiences	
<p>The learning progress of the students is assessed through the observation of the performance of individual students during their daily learning activities by the teachers. The observation is recorded in an Observation Report and Assessment Report and reported to the parents. Parents may also provide feedback on their children's performance in daily life. All the reports and supporting materials will be filed in the "Student Portfolio" of each student.</p>	

Monthly salary range of principal & teaching staff (Data as of Mar. 2023)

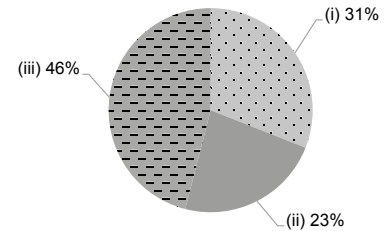
- (i) ≤ \$30,000
- (ii) \$30,001 - \$40,000
- (iii) > \$40,000



School Characteristics	
School vision and mission	
<p>To provide quality pre-primary education and lay the foundation for life-long learning, to render a pleasurable learning environment to nurture self-esteem, self-caring ability, self-learning and decent personality. "Quality education is built on passion for continuous improvements"</p>	
Support to students	
<p>Free extension of student care services hours; adjustment period for new students; collaboration with community organizations; preparatory programme for student adjustment to primary one study.</p>	
Support to non-Chinese speaking (NCS) students	
<p>Received Grant for Support to NCS Students; appoint additional teaching staff / teaching assistants to support NCS students learning Chinese; arrange interpretation / translation services; engage NCS parent volunteers to enhance communication between school and parents; create an enriched language environment for mastery of the Chinese language; create an inclusive learning environment to facilitate students' integration; collaborate with non-governmental organisations (NGOs) to create an inclusive learning environment; facilitate professional development for teachers to develop effective strategies to help NCS students learn Chinese.</p>	
Support to students with special needs	
<p>Joining the On-site Pre-school Rehabilitation Services.</p>	
Link with parents	
<p>Parent-teacher association : No</p>	
Other activities / communication with parents	
<p>Parent-school communication app; briefings for parents of new students; parent-teacher sharing meetings; school and staff evaluation surveys; parent education workshops / seminars; visits to primary schools; parent-child carnival, picnics and sports day etc.</p>	

Working experience of principal & teaching staff in pre-primary education (Data as of Mar. 2023)

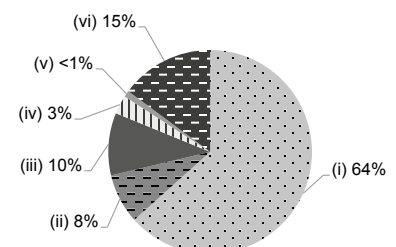
- (i) < 4 years
- (ii) 4 - 7 years
- (iii) > 7 years



2021/22 School Expenditure Information

Expenditure information based on audited account Yes

- (i) salary of principal & teaching staff
- (ii) non-teaching staff salary
- (iii) rent, management fees, rates & government rent
- (iv) teaching resources
- (v) staff training & professional development
- (vi) other expenses



Price of Major School Items (2022 / 23 School Year)			
Summer uniform	\$400 / set	Winter uniform	\$1,028 / set
School bag	\$130 / each	Tea and snacks	No such item
Textbooks	\$1,796 / year	Exercise books/ workbooks	\$0 / year
Stationery	\$160 / year	Bedding items	No such item