



SHARON LUTHERAN CHURCH KINDERGARTEN (TSZ OI BRANCH)

Joining
2023/24 KG Education Scheme

Wong Tai
Sin

Address : ROOFTOP OF CARPORT BUILDING, TSZ OI COURT,
TSZ WAN SHAN, WONG TAI SIN, KOWLOON

School No. 523933

Location No. 0001

Tel. : 2326 0280

Fax. : 2327 0630

School Information	
School Category	Non-profit-making
Student Category	Co-educational
Name of School Supervisor	MR MAK CHUNG TONG
Name of School Principal	MS LEE LAI PING
School Founding Year	1997
Total No. of Permitted Accommodation of Classrooms in Use (Data as of Sept. 2022)	110
Number of Registered Classrooms	6
Outdoor Playground	No
Indoor Playground	Yes
Music Room	Yes
Other Special Room(s) / Area(s)	Children's book Corner, Gross-motor activity room, Dance room
Total No. of Principal & Teaching Staff (Data as of Sept. 2022) *	14
School Website	https://www.sharonlutheran.edu.hk/kindness/zh/
Quality Review : Result and Report	Meeting the prescribed standards https://www.edb.gov.hk/attachment/tc/edu-system/preprimary-kindergarten/quality-assurance-frame-work/qr/qr-report/Sharon_Lutheran_TszOi.pdf

No. & Qualification of Principal & Teaching Staff (Data as of Sept. 2022) *	
Academic Qualification	
Degree holders	8
Non-degree holders	6
Professional Qualification	
C(ECE) or above	13
Qualified KG teachers	1
Other teacher trainings	0
Qualified assistant KG teachers	0
Others	0

* Excluding staff serving aged 0-2

Teacher to Pupil Ratio (Data as of Sept. 2022)	
Teacher to pupil ratio in morning session	1 : 10.2
Teacher to pupil ratio in afternoon session	1 : 5.9
Ratio includes classes aged 2-3	Yes

No. of Enrolment (Data as of Sept. 2022)				
	Nursery	Lower KG	Upper KG	Total
AM Session	11	13	11	35
PM Session	0	0	0	0
WD Session	19	34	19	72

Annual Fees (2023 / 24 School Year)				
		Nursery	Lower KG	Upper KG
Annual Fees After Deduction of Government Subsidy (No. of Instalment)	AM Session	Free	Free	Free
	PM Session	Free	Free	Free
	WD Session	\$4,300 (10)	\$4,300 (10)	\$4,300 (10)

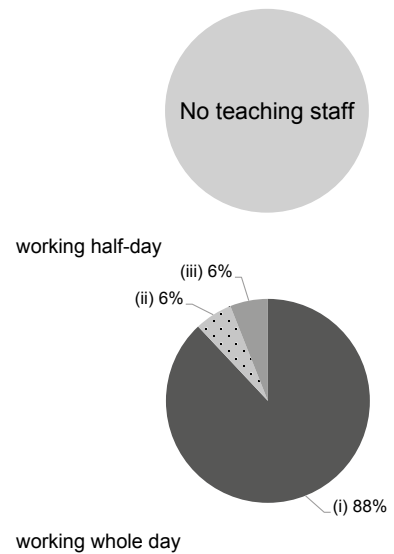
Please refer to the Fees Certificate for details of fees information.

Child Care Services (Data as of Sept. 2022)			
With child care services for children aged 2-3	Yes	With child care services for children aged under 2	No
Fee level (per annum)	\$31,438 (half - day)	No. of enrolment aged 2-3	46
	- (full - day)	Joining Child Care Centre Subsidy Scheme	No
Providing occasional child care services	No	Providing extended hours services	No

Curriculum Details	
Curriculum type : Local	
Curriculum planning	
<p>Based on a "child-centred" approach, our comprehensive curriculum is designed to facilitate children's mental and physical development by providing real-life, sensory and interesting learning experiences and according to their respective stages of development, interest, abilities and needs.</p> <p>We will follow the "Kindergarten Education Curriculum Guide" (2017) to plan curriculum. Children of nursery classes will not be asked to write, and there will not be mechanical copying exercises and drills on calculation.</p>	
Learning / Teaching approach & activities	
<p>Learning focuses on diversity, comprehensiveness and balance while underpinned by biliteracy and trilingualism which is implemented through our thematic instruction and project-based approaches, informed by the "brain based strategy" as a teaching strategy that include joint participation, cooperative learning, thinking proliferation and induction, etc.</p>	
Assessment of children's learning experiences	
<p>Continuous assessment to evaluate children's Learning progress, and creates a learning progress portfolio for each child.</p>	

Monthly salary range of principal & teaching staff (Data as of Mar. 2023)

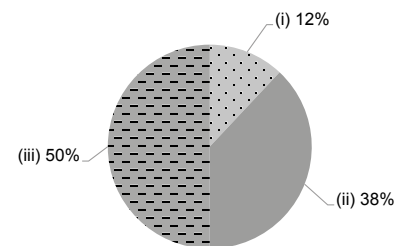
- (i) ≤ \$30,000
- (ii) \$30,001 - \$40,000
- (iii) > \$40,000



School Characteristics	
School vision and mission	
<p>In the love of Christ, our love and caring teachers create an environment for children to enjoy learning. Development of school-based curriculum that takes care of all-round development and with the cultivation of spirit, morals, intellect, physical fitness, sociability and aesthetic as its goal. Special attention is paid to moral education with morning assemblies, religious activities and Christian celebrations to preach the spirit of Christianity and develop positive values. We implement life-wide learning that develop interest to learning and enhance learning abilities</p>	
Support to students	
<p>Organizes activities such as Parents' Briefing Session on Entering Primary One, Adaptation Week for Primary School Life, Primary School Visits, Parent's Assembly and Adaptation Activities of New Entrants. Pilot Scheme On On-site Pre-school Rehabilitation Services with early intervention for children with special needs.</p>	
Support to non-Chinese speaking (NCS) students	
<p>Received Grant for Support to NCS Students; arrange interpretation / translation services; engage NCS parent volunteers to enhance communication between school and parents; facilitate professional development for teachers to develop effective strategies to help NCS students learn Chinese; Arrange a Chinese study group</p>	
Support to students with special needs	
<p>Joining the On-site Pre-school Rehabilitation Services.</p>	
Link with parents	
<p>Parent-teacher association : Yes</p>	
Other activities / communication with parents	
<p>We regular holds Parent-Teacher Consultations, Class Observation Day, Family Activities, Family Reading Program, Parenting Talks, Orientation Talks, Primary One Admissions Talk, PTA newsletter and Open Day, as well as opinion box. Parents can reach us by writing, telephone or by appointment.</p>	

Working experience of principal & teaching staff in pre-primary education (Data as of Mar. 2023)

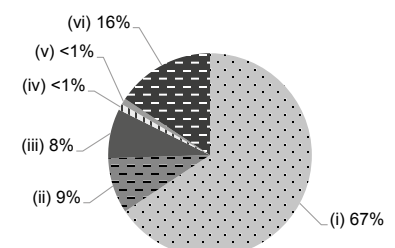
- (i) < 4 years
- (ii) 4 - 7 years
- (iii) > 7 years



2021/22 School Expenditure Information

Expenditure information based on audited account Yes

- (i) salary of principal & teaching staff
- (ii) non-teaching staff salary
- (iii) rent, management fees, rates & government rent
- (iv) teaching resources
- (v) staff training & professional development
- (vi) other expenses



Price of Major School Items (2022 / 23 School Year)			
Summer uniform	\$298 / set	Winter uniform	\$605 / set
School bag	\$75 / each	Tea and snacks	\$1,250 / year
Textbooks	\$1,100-2,000 / year	Exercise books/ workbooks	\$200-500 / year
Stationery	\$400-650 / year	Bedding items	No such item