



# HO LAP KINDERGARTEN (SPONSORED BY SIK SIK YUEN)

Joining  
2023/24 KG Education Scheme

Address : WING B & C, G/F, LOK SHUN HOUSE, TSZ LOK ESTATE,  
TSZ WAN SHAN, WONG TAI SIN, KOWLOON

School No. 523429

Location No. 0001

Tel. : 2324 8201

Fax. : 2328 4693

School Information	
School Category	Non-profit-making
Student Category	Co-educational
Name of School Supervisor	MR MAN WHI CHUNG
Name of School Principal	MS TSANG PUI FONG
School Founding Year	1997
Total No. of Permitted Accommodation of Classrooms in Use (Data as of Sept. 2022)	146
Number of Registered Classrooms	6
Outdoor Playground	No
Indoor Playground	Yes
Music Room	Yes
Other Special Room(s) / Area(s)	Music & Activity Room
Total No. of Principal & Teaching Staff (Data as of Sept. 2022) *	12
School Website	<a href="http://www2.siksikyuen.org.hk/education-services/kindergartens-and-child-care-centres/ho-lap">http://www2.siksikyuen.org.hk/education-services/kindergartens-and-child-care-centres/ho-lap</a>
Quality Review : Result and Report	Meeting the prescribed standards <a href="https://www.edb.gov.hk/attachment/en/edu-system/preprimary-kindergarten/quality-assurance-frame-work/qr/qr-report/SSY_HoLap.pdf">https://www.edb.gov.hk/attachment/en/edu-system/preprimary-kindergarten/quality-assurance-frame-work/qr/qr-report/SSY_HoLap.pdf</a>

No. & Qualification of Principal & Teaching Staff (Data as of Sept. 2022) *	
Academic Qualification	
Degree holders	6
Non-degree holders	6
Professional Qualification	
C(ECE) or above	12
Qualified KG teachers	0
Other teacher trainings	0
Qualified assistant KG teachers	0
Others	0

\* Excluding staff serving aged 0-2

Teacher to Pupil Ratio (Data as of Sept. 2022)	
Teacher to pupil ratio in morning session	1 : 10.5
Teacher to pupil ratio in afternoon session	1 : 6.9
Ratio includes classes aged 2-3	No

No. of Enrolment (Data as of Sept. 2022)				
	Nursery	Lower KG	Upper KG	Total
AM Session	13	17	20	50
PM Session	0	0	0	0
WD Session	26	24	26	76

Annual Fees (2023 / 24 School Year)				
		Nursery	Lower KG	Upper KG
Annual Fees After Deduction of Government Subsidy (No. of Instalment)	AM Session	Free	Free	Free
	PM Session	Free	Free	Free
	WD Session	\$4,235 (11)	\$4,235 (11)	\$4,235 (11)

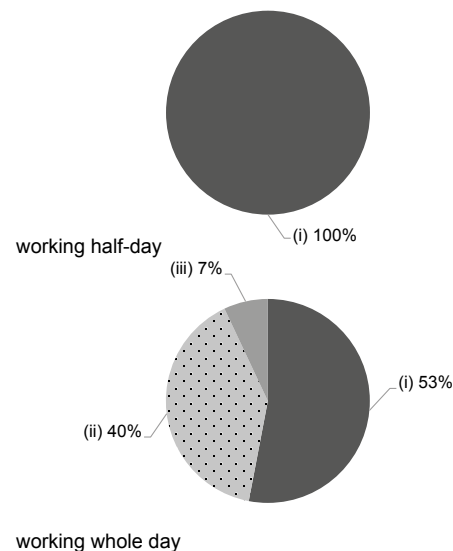
Please refer to the Fees Certificate for details of fees information.

Child Care Services (Data as of Sept. 2022)			
With child care services for children aged 2-3	-	With child care services for children aged under 2	-
Fee level (per annum)	(half - day)	No. of enrolment aged 2-3	0
	(full - day)	Joining Child Care Centre Subsidy Scheme	-
Providing occasional child care services	-	Providing extended hours services	-

Curriculum Details	
Curriculum type : Local	
Curriculum planning	
<p>To develop children's multiple intelligences, we design the curriculum according to children's development, needs, abilities, interests and life experience. Besides, we will hold different extra-curricular activities and science exploring activities based on curriculum themes so that children can learn in a relaxing and pleasant environment and gain all-round development.</p> <p>We will follow the "Kindergarten Education Curriculum Guide" (2017) to plan curriculum. Children of nursery classes will not be asked to write, and there will not be mechanical copying exercises and drills on calculation.</p>	
Learning / Teaching approach & activities	
<p>We design children-centred curriculum with a view to inspiring and guiding children. Moreover, we cultivate and develop children's ability to learn independently via spiral teaching methods such as theme-based and group-based teaching, whole-language teaching and designed activities, and music, games, stories and diversified activities.</p>	
Assessment of children's learning experiences	
<p>Based on on-going observation, we make a study portfolio to record children's academic performances and send the portfolio to parents on a regular basis together with text description and pictures.</p>	

Monthly salary range of principal & teaching staff (Data as of Mar. 2023)

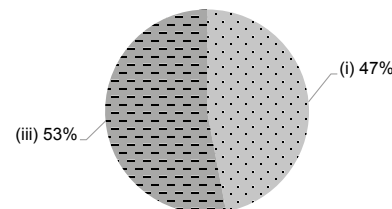
- (i) ≤ \$30,000
- (ii) \$30,001 - \$40,000
- (iii) > \$40,000



School Characteristics	
School vision and mission	
<p>Sticking to Sik Sik Yuen's principle of "centring on students" and "teaching students in accordance with their aptitudes", we are committed to providing children with a pleasant learning environment with diversified and children-centred teaching methods, excellent teachers and abundant teaching facilities. In this way, children can learn knowledge inside and outside classrooms and learn skills of getting along with people in group life. More importantly, we inspire children to learn in an initiative manner and help them grow in all aspects healthily and happily.</p>	
Support to students	
<p>New students adaption week, P.1 mock week, caring for children with individual differences (there is a group supporting students having learning needs), and stationing school social work service.</p>	
Support to non-Chinese speaking (NCS) students	
<p>Received Grant for Support to NCS Students; appoint additional teaching staff / teaching assistants to support NCS students learning Chinese; facilitate professional development for teachers to develop effective strategies to help NCS students learn Chinese; participate in school-based professional support programmes organised by EDB.</p>	
Support to students with special needs	
<p>Joining the On-site Pre-school Rehabilitation Services.</p>	
Link with parents	
<p>Parent-teacher association : Yes</p>	
Other activities / communication with parents	
<p>Parents' meeting, parents' meeting for P.1 students, school open day, parent education seminars and workshops, parent-child Sports Day, School Picnic, parent-child reading programme, parent class observation, storytelling parents, parent crafts class; parent-teacher association and "parent volunteer team" assisting our school activities to establish a sense of belongingness to the school.</p>	

Working experience of principal & teaching staff in pre-primary education (Data as of Mar. 2023)

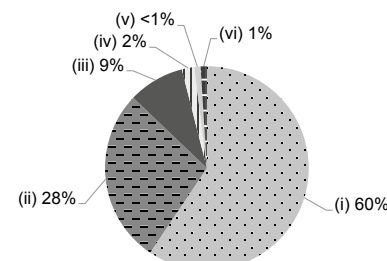
- (i) < 4 years
- (ii) 4 - 7 years
- (iii) > 7 years



2021/22 School Expenditure Information

Expenditure information based on audited account Yes

- (i) salary of principal & teaching staff
- (ii) non-teaching staff salary
- (iii) rent, management fees, rates & government rent
- (iv) teaching resources
- (v) staff training & professional development
- (vi) other expenses



Price of Major School Items (2022 / 23 School Year)

Summer uniform	\$530 / set	Winter uniform	\$780 / set
School bag	\$95 / each	Tea and snacks	\$0 / year
Textbooks	\$360 / year	Exercise books/ workbooks	\$360 / year
Stationery	\$245 / year	Bedding items	\$400 / set