



CHRISTIAN LITTLE ANGEL KINDERGARTEN (KAM FUNG COURT)

Sha Tin

Address : G/F KAM WAI HOUSE, KAM FUNG COURT
MA ON SHAN, NEW TERRITORIES

Joining
2023/24 KG Education Scheme

School No. 522678

Location No. 0001

Tel. : 2640 6783

Fax. : 2640 6392

School Information	
School Category	Non-profit-making
Student Category	Co-educational
Name of School Supervisor	MR LAI SHU HO PATRICK
Name of School Principal	MS WUN YUET YUE
School Founding Year	1997
Total No. of Permitted Accommodation of Classrooms in Use (Data as of Sept. 2022)	134
Number of Registered Classrooms	6
Outdoor Playground	No
Indoor Playground	Yes
Music Room	Yes
Other Special Room(s) / Area(s)	No
Total No. of Principal & Teaching Staff (Data as of Sept. 2022) *	7
School Website	http://www.clakkf.edu.hk
Quality Review : Result and Report	Meeting the prescribed standards https://www.edb.gov.hk/attachment/en/edu-system/preprimary-kindergarten/quality-assurance-frame-work/qr/qr-report/CLA_KamFungCourt.pdf

No. & Qualification of Principal & Teaching Staff (Data as of Sept. 2022) *	
Academic Qualification	
Degree holders	5
Non-degree holders	2
Professional Qualification	
C(ECE) or above	7
Qualified KG teachers	0
Other teacher trainings	0
Qualified assistant KG teachers	0
Others	0

* Excluding staff serving aged 0-2

Teacher to Pupil Ratio (Data as of Sept. 2022)	
Teacher to pupil ratio in morning session	1 : 12.6
Teacher to pupil ratio in afternoon session	1 : 6.0
Ratio includes classes aged 2-3	Yes

No. of Enrolment (Data as of Sept. 2022)				
	Nursery	Lower KG	Upper KG	Total
AM Session	8	10	16	34
PM Session	0	0	0	0
WD Session	9	13	18	40

Annual Fees (2023 / 24 School Year)				
		Nursery	Lower KG	Upper KG
Annual Fees After Deduction of Government Subsidy (No. of Instalment)	AM Session	Free	Free	Free
	PM Session	Free	Free	Free
	WD Session	Free	Free	Free

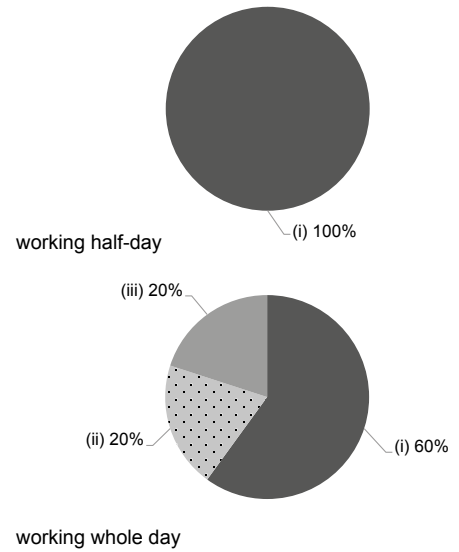
Please refer to the Fees Certificate for details of fees information.

Child Care Services (Data as of Sept. 2022)			
With child care services for children aged 2-3	Yes	With child care services for children aged under 2	No
Fee level (per annum)	\$27,228 (half - day)	No. of enrolment aged 2-3	16
	- (full - day)	Joining Child Care Centre Subsidy Scheme	No
Providing occasional child care services	No	Providing extended hours services	No

Curriculum Details	
Curriculum type : Local	
Curriculum planning	
<p>With reference to the Preschool Education Curriculum Guidelines, we design our curriculum according to children's age characteristics and psychological development and on the theoretical basis that children learn in a progressive, systemic manner as they grow.</p> <p>We will follow the "Kindergarten Education Curriculum Guide" (2017) to plan curriculum. Children of nursery classes will not be asked to write, and there will not be mechanical copying exercises and drills on calculation.</p>	
Learning / Teaching approach & activities	
<p>Centering on children, we foster interaction between them and teachers and develop their creativity. Children are taught within a class- or group-wide range. We also organize games, community activities, visits, matches, etc. that can arouse children's interest in learning. Native English teachers and professional Mandarin teachers teach children Bi-literacy and Tri-lingualism by organizing interactive games.</p>	
Assessment of children's learning experiences	
<p>Children's learning and development portfolios - children's growth & development and learning is assessed through continuous observations.</p>	

Monthly salary range of principal & teaching staff (Data as of Mar. 2023)

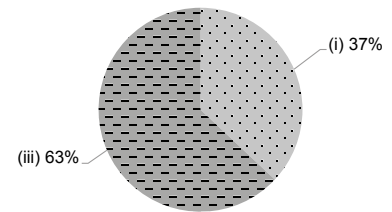
- (i) ≤ \$30,000
- (ii) \$30,001 - \$40,000
- (iii) > \$40,000



School Characteristics	
School vision and mission	
<p>In line with Christ's love for humanity, we provide quality preschool education for children to acquire knowledge and understand the truth of Jesus Christ. We focus on inspiring children's talents, expanding their diversified abilities and cultivating in them a good character so that they attain balanced development in intellectual, spiritual, mental and physical aspects. That way, we hope to educate them to become lifelong learners, independent thinkers, and innovators.</p>	
Support to students	
<p>New Students Admission Adaption / Parent Counseling Day. Follow-up counseling depending on the needs of individual children. Support for K.3 students in their transition to P.1. Mock P.1 Learning Activities, primary school visits, Primary School Experience Day, etc.</p>	
Support to non-Chinese speaking (NCS) students	
<p>Create an enriched language environment for mastery of the Chinese language; create an inclusive learning environment to facilitate students' integration; participate in school-based professional support programmes organised by EDB.</p>	
Support to students with special needs	
<p>Joining the On-site Pre-school Rehabilitation Services.</p>	
Link with parents	
<p>Parent-teacher association : Yes</p>	
Other activities / communication with parents	
<p>General school affairs and administrative matters will be notified to parents in the form of letters or announcements. We also post information online. Teachers make appointments to meet with individual parents or have heart-to-heart talks with them by phone. Home Visits, Parent Team, Parent Volunteers, Parents Day, Parents Education Seminars / Class Visits / Conferences. The Parent-Teacher Association. Parent-Child Activities: Game Day, Christmas Gala Evening, School Picnics. Parents Questionnaires.</p>	

Working experience of principal & teaching staff in pre-primary education (Data as of Mar. 2023)

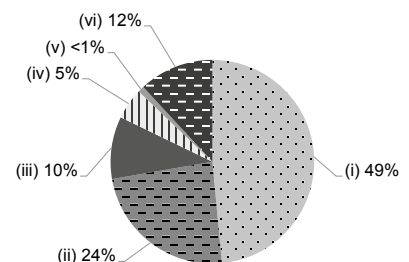
- (i) < 4 years
- (ii) 4 - 7 years
- (iii) > 7 years



2021/22 School Expenditure Information

Expenditure information based on audited account Yes

- (i) salary of principal & teaching staff
- (ii) non-teaching staff salary
- (iii) rent, management fees, rates & government rent
- (iv) teaching resources
- (v) staff training & professional development
- (vi) other expenses



Price of Major School Items (2022 / 23 School Year)			
Summer uniform	\$262 / set	Winter uniform	\$520 / set
School bag	\$41 / each	Tea and snacks	\$800 / year
Textbooks	\$1,123-1,140 / year	Exercise books/ workbooks	\$0 / year
Stationery	\$0 / year	Bedding items	No such item