



FANLING ASSEMBLY OF GOD CHURCH GRACE LIGHT KINDERGARTEN

North

Address : WINGS B & C, G/F, YIN KING HOUSE, KING SHING
COURT, FANLING, NEW TERRITORIES

Joining
2023/24 KG Education Scheme

School No. 519499

Location No. 0001

Tel. : 2682 6933

Fax. : 2682 6700

School Information	
School Category	Non-profit-making
Student Category	Co-educational
Name of School Supervisor	MS CHAU YUEN CHI
Name of School Principal	MS MOK WAI KEI VICKY
School Founding Year	1996
Total No. of Permitted Accommodation of Classrooms in Use (Data as of Sept. 2022)	166
Number of Registered Classrooms	6
Outdoor Playground	No
Indoor Playground	Yes
Music Room	Yes
Other Special Room(s) / Area(s)	STEM WALL, COUNSELLING ROOM, ACTIVITY ROOM, READING CORNER
Total No. of Principal & Teaching Staff (Data as of Sept. 2022) *	15
School Website	http://www.gracelight.edu.hk
Quality Review : Result and Report	Meeting the prescribed standards https://www.edb.gov.hk/attachment/en/edu-system/preprimary-kindergarten/quality-assurance-frame-work/qr/qr-report/FAGC_GraceLight.pdf

No. & Qualification of Principal & Teaching Staff (Data as of Sept. 2022) *	
Academic Qualification	
Degree holders	11
Non-degree holders	4
Professional Qualification	
C(ECE) or above	15
Qualified KG teachers	0
Other teacher trainings	0
Qualified assistant KG teachers	0
Others	0

* Excluding staff serving aged 0-2

Teacher to Pupil Ratio (Data as of Sept. 2022)	
Teacher to pupil ratio in morning session	1 : 10.6
Teacher to pupil ratio in afternoon session	1 : 9.0
Ratio includes classes aged 2-3	Yes

No. of Enrolment (Data as of Sept. 2022)				
	Nursery	Lower KG	Upper KG	Total
AM Session	32	28	19	79
PM Session	0	0	0	0
WD Session	23	31	26	80

Annual Fees (2023 / 24 School Year)				
		Nursery	Lower KG	Upper KG
Annual Fees After Deduction of Government Subsidy (No. of Instalment)	AM Session	Free	Free	Free
	PM Session	Free	Free	Free
	WD Session	\$4,950 (11)	\$4,950 (11)	\$4,950 (11)

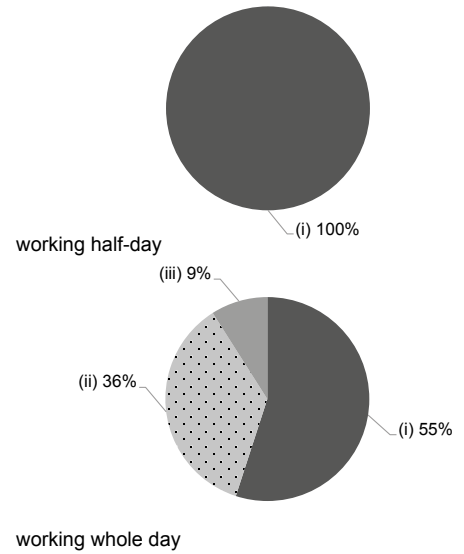
Please refer to the Fees Certificate for details of fees information.

Child Care Services (Data as of Sept. 2022)			
With child care services for children aged 2-3	Yes	With child care services for children aged under 2	No
Fee level (per annum)	\$29,700 (half - day)	No. of enrolment aged 2-3	19
	- (full - day)	Joining Child Care Centre Subsidy Scheme	No
Providing occasional child care services	No	Providing extended hours services	No

Curriculum Details	
Curriculum type : Local	
Curriculum planning	
<p>Design different thematic learning with "child-centered". The school uses game teaching as a strategy to encourage students to explore freely, build self-confidence and improve problem-solving skills. In addition, the school promotes "Life Education" to cultivate students' attitude of practicing kindness and gratitude.</p> <p>We will follow the "Kindergarten Education Curriculum Guide" (2017) to plan curriculum. Children of nursery classes will not be asked to write, and there will not be mechanical copying exercises and drills on calculation.</p>	
Learning / Teaching approach & activities	
<p>Adopt flexible large-class or group teaching methods, and promote courses with children's life-oriented theme game teaching and project study. Through diversified learning activities, children are allowed to explore freely from games and learn to learn to promote autonomous learning; express and solve problems; promote life education through one-person, one-flower planting activities and caring community activities, and establish children's correct values from an early age.</p>	
Assessment of children's learning experiences	
<p>A 'profile on learning' is kept for ongoing observations and records of a child's learning and development. Children's performance in learning is analyzed and the learning outcomes are observed and recorded on an ongoing basis.</p>	

Monthly salary range of principal & teaching staff
(Data as of Mar. 2023)

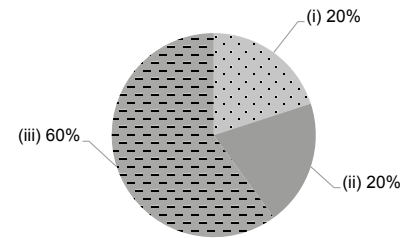
- (i) ≤ \$30,000
- (ii) \$30,001 - \$40,000
- (iii) > \$40,000



School Characteristics	
School vision and mission	
<p>Purpose: To establish a high-quality gospel campus that loves God and loves others. Mission: (1) Cultivate future talents with the value of Christ and contribute to society. (2) Through home-school cooperation and rich resources, cultivate students' balanced development in moral, intellectual, physical, social, aesthetic and spiritual.</p>	
Support to students	
<p>There are school social workers, and teachers often observe the individual development of children, provide individual counselling or referrals for children with special needs, and liaise closely with parents. The school will set up a lecture for parents of new students before enrollment, and an adjustment period for new students after enrollment; in addition, parents at all levels are invited to the school to observe lessons every year, so that parents can understand their children's learning situation. At the end of the school year, preparations for the transition of children into promotion and primary one are prepared.</p>	
Support to non-Chinese speaking (NCS) students	
<p>Arrange interpretation / translation services; create an enriched language environment for mastery of the Chinese language; create an inclusive learning environment to facilitate students' integration; facilitate professional development for teachers to develop effective strategies to help NCS students learn Chinese.</p>	
Support to students with special needs	
<p>Joining the On-site Pre-school Rehabilitation Services.</p>	
Link with parents	
<p>Parent-teacher association : No</p>	
Other activities / communication with parents	
<p>Organize parent-child day, special lectures, workshops, parent-child travel, parent-child design competition, parent-volunteer team, parent-to-heart group.</p>	

Working experience of principal & teaching staff in pre-primary education
(Data as of Mar. 2023)

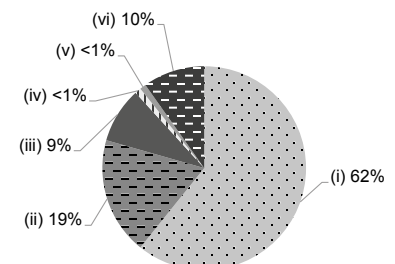
- (i) < 4 years
- (ii) 4 - 7 years
- (iii) > 7 years



2021/22 School Expenditure Information

Expenditure information based on audited account Yes

- (i) salary of principal & teaching staff
- (ii) non-teaching staff salary
- (iii) rent, management fees, rates & government rent
- (iv) teaching resources
- (v) staff training & professional development
- (vi) other expenses



Price of Major School Items (2022 / 23 School Year)			
Summer uniform	\$298 / set	Winter uniform	\$559-630 / set
School bag	\$95 / each	Tea and snacks	\$330 / year
Textbooks	\$488-545 / year	Exercise books/ workbooks	\$72 / year
Stationery	\$110 / year	Bedding items	No such item