



TSING YI TRADE ASSOCIATION SHEK YAM KINDERGARTEN

Kwai Chung &
Tsing Yi

Address : G/F, YAM HENG HOUSE, SHEK YAM EAST ESTATE,
KWAI CHUNG, NEW TERRITORIES

Joining
2023/24 KG Education Scheme

School No. 519448

Location No. 0001

Tel. : 2426 6885

Fax. : 2426 2608

School Information

School Category	Non-profit-making
Student Category	Co-educational
Name of School Supervisor	MS CHU WAI LING
Name of School Principal	MS LEUNG KA LO
School Founding Year	1996
Total No. of Permitted Accommodation of Classrooms in Use (Data as of Sept. 2022)	115
Number of Registered Classrooms	5
Outdoor Playground	No
Indoor Playground	Yes
Music Room	Yes
Other Special Room(s) / Area(s)	No
Total No. of Principal & Teaching Staff (Data as of Sept. 2022) *	9
School Website	http://www.sykg.edu.hk
Quality Review : Result and Report	Meeting the prescribed standards https://www.edb.gov.hk/attachment/en/edu-system/preprimary-kindergarten/quality-assurance-frame-work/qr/qr-report/TTTA_ShekYam.pdf

No. & Qualification of Principal & Teaching Staff (Data as of Sept. 2022) *

Academic Qualification	
Degree holders	8
Non-degree holders	1
Professional Qualification	
C(ECE) or above	9
Qualified KG teachers	0
Other teacher trainings	0
Qualified assistant KG teachers	0
Others	0

* Excluding staff serving aged 0-2

Teacher to Pupil Ratio (Data as of Sept. 2022)

Teacher to pupil ratio in morning session	1 : 7.9
Teacher to pupil ratio in afternoon session	1 : 6.3
Ratio includes classes aged 2-3	No

No. of Enrolment (Data as of Sept. 2022)

	Nursery	Lower KG	Upper KG	Total
AM Session	8	8	11	27
PM Session	0	0	0	0
WD Session	16	9	19	44

Annual Fees (2023 / 24 School Year)

		Nursery	Lower KG	Upper KG
Annual Fees After Deduction of Government Subsidy (No. of Instalment)	AM Session	Free	Free	Free
	PM Session	-	-	-
	WD Session	\$8,800 (10)	\$8,800 (10)	\$8,800 (10)

Please refer to the Fees Certificate for details of fees information.

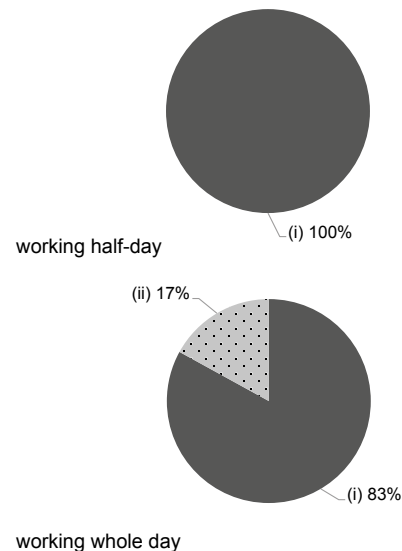
Child Care Services (Data as of Sept. 2022)

With child care services for children aged 2-3	-	With child care services for children aged under 2	-
Fee level (per annum)	(half - day)	No. of enrolment aged 2-3	0
	(full - day)	Joining Child Care Centre Subsidy Scheme	-
Providing occasional child care services	-	Providing extended hours services	-

Curriculum Details	
Curriculum type : Local	
Curriculum planning	
Thematically coherent curriculum that combines children's life experiences and their learning interests and abilities and blends all three elements of knowledge, skills, attitudes is designed to foster proactive learning on the principle of encouraging more thinking, questioning and problem solving. Strengthening the promotion of moral education.	
We will follow the "Kindergarten Education Curriculum Guide" (2017) to plan curriculum. Children of nursery classes will not be asked to write, and there will not be mechanical copying exercises and drills on calculation.	
Learning / Teaching approach & activities	
Synthetic Instruction to design suitable activities, with thematic approach, learning corner, group projects, visits, data collection, experiments, and the like for follow up, discuss and sharing. A creative arts program serves as extended learning to develop an inquisitive mind, learning through play and reinforce learning.	
Assessment of children's learning experiences	
We implement continuous observation and recording to monitor each children's learning and behaviour in each knowledge areas on campus, supplemented by home life observation log for review. Systematic assessment is carried out on targeted development areas, with summative assessment arranged at the end of each semester.	

Monthly salary range of principal & teaching staff (Data as of Mar. 2023)

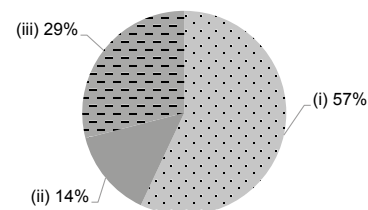
- (i) ≤ \$30,000
- (ii) \$30,001 - \$40,000
- (iii) > \$40,000



School Characteristics	
School vision and mission	
We provide care and education to young children which facilitates their all-round development, to promote high-quality early childhood education, foster good habits and correct attitudes to life in children.	
Support to students	
New entrants orientation, Primary One classroom adaptation, referrals of student with special issues with individual dossier created for each student, school-based social worker stationed two days a week on campus. Develop students' positive attitudes and values in kindergarten.	
Support to non-Chinese speaking (NCS) students	
Received Grant for Support to NCS Students; appoint additional teaching staff / teaching assistants to support NCS students learning Chinese; arrange interpretation / translation services; engage NCS parent volunteers to enhance communication between school and parents; create an enriched language environment for mastery of the Chinese language; create an inclusive learning environment to facilitate students' integration; facilitate professional development for teachers to develop effective strategies to help NCS students learn Chinese; participate in school-based professional support programmes organised by EDB.	
Support to students with special needs	
Joining the On-site Pre-school Rehabilitation Services. Transitional support.	
Link with parents	
Parent-teacher association : No	
Other activities / communication with parents	
We organize parent's seminars for different grades, parent talks, parent's group is organized by school-based social worker, parent-teacher conference day, parent-child learning trips, parent-child festival celebrations.	

Working experience of principal & teaching staff in pre-primary education (Data as of Mar. 2023)

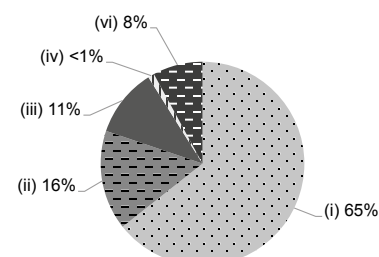
- (i) < 4 years
- (ii) 4 - 7 years
- (iii) > 7 years



2021/22 School Expenditure Information

Expenditure information based on audited account Yes

- (i) salary of principal & teaching staff
- (ii) non-teaching staff salary
- (iii) rent, management fees, rates & government rent
- (iv) teaching resources
- (v) staff training & professional development
- (vi) other expenses



Price of Major School Items (2022 / 23 School Year)			
Summer uniform	\$282 / set	Winter uniform	\$406 / set
School bag	\$125 / each	Tea and snacks	\$1,545 / year
Textbooks	\$962-1,088 / year	Exercise books/workbooks	\$686-1,306 / year
Stationery	\$155-170 / year	Bedding items	No such item