



YIU TUNG BAPTIST KINDERGARTEN

Hong Kong
East

Address : G/F, WINGS B & C, YIU FU HOUSE, YIU TUNG ESTATE,
SHAUKIWAN, HONG KONG

Tel. : 2535 8493

Fax. : 2568 5920

Joining
2023/24 KG Education Scheme

School No. 326011

Location No. 0001

School Information	
School Category	Non-profit-making
Student Category	Co-educational
Name of School Supervisor	MR CHAN MEI TAK
Name of School Principal	MS CHAN TSUI YUK
School Founding Year	1994
Total No. of Permitted Accommodation of Classrooms in Use (Data as of Sept. 2022)	171
Number of Registered Classrooms	6
Outdoor Playground	No
Indoor Playground	Yes
Music Room	Yes
Other Special Room(s) / Area(s)	Computer room, Activity room
Total No. of Principal & Teaching Staff (Data as of Sept. 2022) *	15
School Website	http://www.yiutung-bapkg.edu.hk
Quality Review : Result and Report	Meeting the prescribed standards https://www.edb.gov.hk/attachment/en/edu-system/preprimary-kindergarten/quality-assurance-frame-work/qv/qv-report/YiuTung_Baptist.pdf

No. & Qualification of Principal & Teaching Staff (Data as of Sept. 2022) *	
Academic Qualification	
Degree holders	10
Non-degree holders	5
Professional Qualification	
C(ECE) or above	15
Qualified KG teachers	0
Other teacher trainings	0
Qualified assistant KG teachers	0
Others	0

* Excluding staff serving aged 0-2

Teacher to Pupil Ratio (Data as of Sept. 2022)	
Teacher to pupil ratio in morning session	1 : 8.7
Teacher to pupil ratio in afternoon session	1 : 5.8
Ratio includes classes aged 2-3	No

No. of Enrolment (Data as of Sept. 2022)				
	Nursery	Lower KG	Upper KG	Total
AM Session	25	20	21	66
PM Session	0	0	0	0
WD Session	15	22	27	64

Annual Fees (2023 / 24 School Year)				
		Nursery	Lower KG	Upper KG
Annual Fees After Deduction of Government Subsidy (No. of Instalment)	AM Session	Free	Free	Free
	PM Session	-	-	-
	WD Session	\$15,400 (11)	\$15,400 (11)	\$15,400 (11)

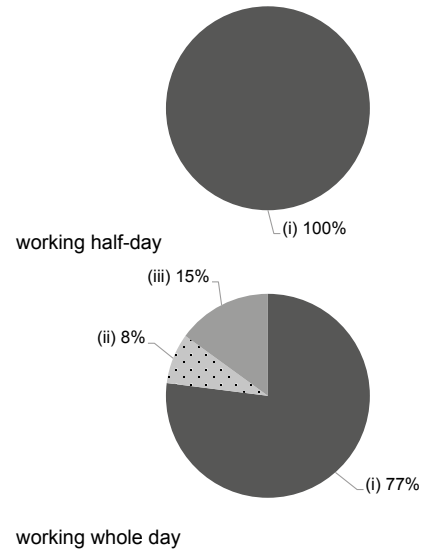
Please refer to the Fees Certificate for details of fees information.

Child Care Services (Data as of Sept. 2022)			
With child care services for children aged 2-3	-	With child care services for children aged under 2	-
Fee level (per annum)	(half - day)	No. of enrolment aged 2-3	0
	(full - day)	Joining Child Care Centre Subsidy Scheme	-
Providing occasional child care services	-	Providing extended hours services	-

Curriculum Details	
Curriculum type : Local	
Curriculum planning	
Our curriculum is set according to children's physical and mental development and to match their learning interest.	
We will follow the "Kindergarten Education Curriculum Guide" (2017) to plan curriculum. Children of nursery classes will not be asked to write, and there will not be mechanical copying exercises and drills on calculation.	
Learning / Teaching approach & activities	
The activity approach, visits, small group activities, the project approach.	
Assessment of children's learning experiences	
We record children's learning effectiveness through continuous observation.	

Monthly salary range of principal & teaching staff
(Data as of Mar. 2023)

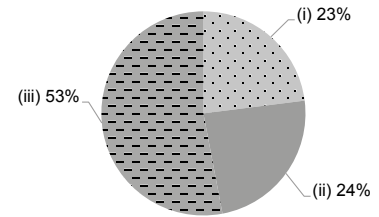
- (i) ≤ \$30,000
- (ii) \$30,001 - \$40,000
- (iii) > \$40,000



School Characteristics	
School vision and mission	
Our school mission is "to love others as self". We nurture students to attain development in the domains of ethics, intellect, physique, social skills, aesthetics and spiritual education.	
Support to students	
New student adaptaptation period, collaboration with community organizations, home visits, student counselling	
Support to non-Chinese speaking (NCS) students	
Received Grant for Support to NCS Students; appoint additional teaching staff / teaching assistants to support NCS students learning Chinese; arrange interpretation / translation services; engage NCS parent volunteers to enhance communication between school and parents; create an enriched language environment for mastery of the Chinese language; create an inclusive learning environment to facilitate students' integration; collaborate with non-governmental organisations (NGOs) to create an inclusive learning environment; facilitate professional development for teachers to develop effective strategies to help NCS students learn Chinese; participate in school-based professional support programmes organised by EDB; Purchase suitable learning materials	
Support to students with special needs	
Joining the On-site Pre-school Rehabilitation Services.	
Link with parents	
Parent-teacher association : No	
Other activities / communication with parents	
Parent volunteers, parents' day, parents' class observation, parents' talks, parent-child activities, parent-child outings	

Working experience of principal & teaching staff in pre-primary education
(Data as of Mar. 2023)

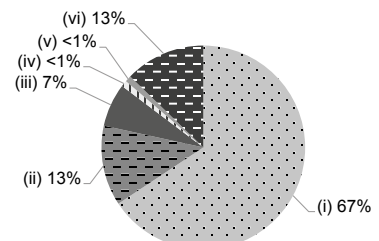
- (i) < 4 years
- (ii) 4 - 7 years
- (iii) > 7 years



2021/22 School Expenditure Information

Expenditure information based on audited account Yes

- (i) salary of principal & teaching staff
- (ii) non-teaching staff salary
- (iii) rent, management fees, rates & government rent
- (iv) teaching resources
- (v) staff training & professional development
- (vi) other expenses



Price of Major School Items (2022 / 23 School Year)			
Summer uniform	\$283 / set	Winter uniform	\$447 / set
School bag	\$82 / each	Tea and snacks	\$935 / year
Textbooks	\$1,180 / year	Exercise books/ workbooks	\$342 / year
Stationery	\$282 / year	Bedding items	\$500 / set