



ST. JAMES CATHOLIC KINDERGARTEN

Kwun Tong

Address : 8 KA WING STREET, YAU TONG, KOWLOON

Joining
2023/24 KG Education Scheme

School No. 325708

Tel. : 2348 9344

Fax. : 2340 4585

Location No. 0001

School Information	
School Category	Non-profit-making
Student Category	Co-educational
Name of School Supervisor	MS CHAN CHI MAN
Name of School Principal	MS WONG SUET WUN
School Founding Year	1965
Total No. of Permitted Accommodation of Classrooms in Use (Data as of Sept. 2022)	126
Number of Registered Classrooms	6
Outdoor Playground	Yes
Indoor Playground	Yes
Music Room	Yes
Other Special Room(s) / Area(s)	hall, function room, dancing room, garden and church
Total No. of Principal & Teaching Staff (Data as of Sept. 2022) *	12
School Website	http://www.sjck.edu.hk
Quality Review : Result and Report	Meeting the prescribed standards https://www.edb.gov.hk/attachment/en/edu-system/preprimary-kindergarten/quality-assurance-frame-work/qr/qr-report/StJames_Catholic.pdf

No. & Qualification of Principal & Teaching Staff (Data as of Sept. 2022) *	
Academic Qualification	
Degree holders	7
Non-degree holders	5
Professional Qualification	
C(ECE) or above	12
Qualified KG teachers	0
Other teacher trainings	0
Qualified assistant KG teachers	0
Others	0

* Excluding staff serving aged 0-2

Teacher to Pupil Ratio (Data as of Sept. 2022)	
Teacher to pupil ratio in morning session	1 : 9.1
Teacher to pupil ratio in afternoon session	1 : 9.5
Ratio includes classes aged 2-3	No

No. of Enrolment (Data as of Sept. 2022)				
	Nursery	Lower KG	Upper KG	Total
AM Session	3	5	6	14
PM Session	0	0	0	0
WD Session	28	30	37	95

Annual Fees (2023 / 24 School Year)				
		Nursery	Lower KG	Upper KG
Annual Fees After Deduction of Government Subsidy (No. of Instalment)	AM Session	Free	Free	Free
	PM Session	-	-	-
	WD Session	\$13,000 (10)	\$13,000 (10)	\$13,000 (10)

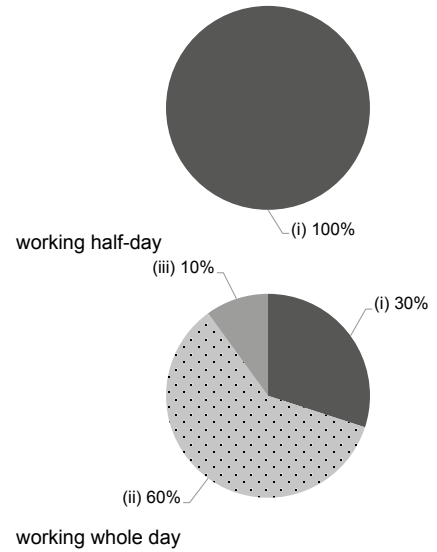
Please refer to the Fees Certificate for details of fees information.

Child Care Services (Data as of Sept. 2022)			
With child care services for children aged 2-3	-	With child care services for children aged under 2	-
Fee level (per annum)	(half - day)	No. of enrolment aged 2-3	0
	(full - day)	Joining Child Care Centre Subsidy Scheme	-
Providing occasional child care services	-	Providing extended hours services	-

Curriculum Details	
Curriculum type : Local	
Curriculum planning	
<p>A child-oriented curriculum that incorporates comprehensive and balanced teaching elements. We aim to trigger children's learning motivation and curiosity through games, visits and experimental activities. Emphasis on moral education through "life education" and "environmental and ecological education" that teaches children to love others, respect for life, care for the environment and actively build positive values and outlook on life.</p> <p>We will follow the "Kindergarten Education Curriculum Guide" (2017) to plan curriculum. Children of nursery classes will not be asked to write, and there will not be mechanical copying exercises and drills on calculation.</p>	
Learning / Teaching approach & activities	
<p>We pursue an independent learning model in which a diversified learning area provides children the opportunity to plan and conduct their personal learning activities to inspire independent learning, develop generic skills and incorporate balanced spiritual, physical, intellectual, language, emotional, sociability and creativity development. Group learning and lively engaging instruction to enhance young children's learning ability and effectiveness of the English and Putonghua. We use picture books to design experiential learning activities, nurturing children to develop good reading habits from an early age.</p>	
Assessment of children's learning experiences	
<p>Continuous assessment based on different areas of learning, and timely adjustment in response to need, also accompanied by effective examples for illustration for parents to fully understand their children's capacity development and learning process.</p>	

Monthly salary range of principal & teaching staff (Data as of Mar. 2023)

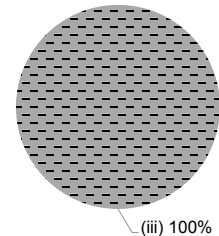
- (i) ≤ \$30,000
- (ii) \$30,001 - \$40,000
- (iii) > \$40,000



School Characteristics	
School vision and mission	
<p>We are dedicated to the all-round education based on the spirit of Christ, and actively follow the example of our patron St. James the Apostle in his spirit of absolute service to the Lord, his perseverance, and his pursuit of truth and courageous determination by staying committed to our mission to spread the Gospel, and train our fine next generation to be healthy, independent thinking, positive, proactive and friendly.</p>	
Support to students	
<p>We organise "Campus Experience Day for New Entrants" and "Flexible Adaptive Schedule" for children to gradually adapt to campus life and build confidence. On the individual differences in children's learning ability, we adopt a flexible mode of learning to cater them; with appropriate support and intervention provided for children and parents with special needs.</p>	
Support to non-Chinese speaking (NCS) students	
<p>Received Grant for Support to NCS Students; arrange interpretation / translation services; create an enriched language environment for mastery of the Chinese language; create an inclusive learning environment to facilitate students' integration; facilitate professional development for teachers to develop effective strategies to help NCS students learn Chinese.</p>	
Support to students with special needs	
<p>Joining the On-site Pre-school Rehabilitation Services. School Social Worker</p>	
Link with parents	
<p>Parent-teacher association : Yes</p>	
Other activities / communication with parents	
<p>Parents assist in teaching activities, art and creative workshops, home-school networking events, parents sharing forums, parents' hobbies classes, class observations, parent-child tree planting and reading incentive scheme. Parent volunteers are also involved in charity and service campaigns, and support to those in need within the community.</p>	

Working experience of principal & teaching staff in pre-primary education (Data as of Mar. 2023)

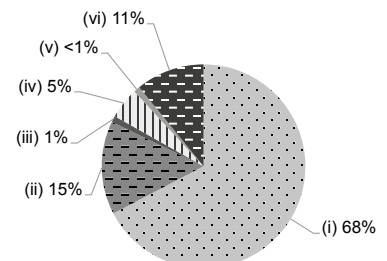
- (i) < 4 years
- (ii) 4 - 7 years
- (iii) > 7 years



2021/22 School Expenditure Information

Expenditure information based on audited account Yes

- (i) salary of principal & teaching staff
- (ii) non-teaching staff salary
- (iii) rent, management fees, rates & government rent
- (iv) teaching resources
- (v) staff training & professional development
- (vi) other expenses



Price of Major School Items (2022 / 23 School Year)			
Summer uniform	\$341 / set	Winter uniform	\$731 / set
School bag	\$115 / each	Tea and snacks	\$800 / year
Textbooks	\$875-992 / year	Exercise books/ workbooks	\$7-10 / year
Stationery	\$267-373 / year	Bedding items	No such item