



# CHAI WAN BAPTIST CHURCH PRE-SCHOOL EDUCATION LUI MING CHOI KINDERGARTEN

Hong Kong  
East

Address : 1/F & 4/F FLAT ROOF, 30 FEI TSUI ROAD, CHAI WAN,  
HONG KONG (INCLUDING CHILD CARE CENTRE)

Joining  
2023/24 KG Education Scheme

School No. 325597

Location No. 0001

Tel. : 2558 0199

Fax. : 2558 5699

School Information	
School Category	Non-profit-making
Student Category	Co-educational
Name of School Supervisor	MS LAI SHIU MAY
Name of School Principal	MS CHIU CHI LING
School Founding Year	1988
Total No. of Permitted Accommodation of Classrooms in Use (Data as of Sept. 2022)	91
Number of Registered Classrooms	7
Outdoor Playground	Yes
Indoor Playground	Yes
Music Room	Yes
Other Special Room(s) / Area(s)	No
Total No. of Principal & Teaching Staff (Data as of Sept. 2022) *	9
School Website	<a href="http://www.cwbclmc.edu.hk">http://www.cwbclmc.edu.hk</a>
Quality Review : Result and Report	Meeting the prescribed standards <a href="https://www.edb.gov.hk/attachment/tc/edu-system/preprimary-kindergarten/quality-assurance-frame-work/qr/qr-report/CWBPCSELMC_ChaiWan.pdf">https://www.edb.gov.hk/attachment/tc/edu-system/preprimary-kindergarten/quality-assurance-frame-work/qr/qr-report/CWBPCSELMC_ChaiWan.pdf</a>

No. & Qualification of Principal & Teaching Staff (Data as of Sept. 2022) *	
Academic Qualification	
Degree holders	6
Non-degree holders	3
Professional Qualification	
C(ECE) or above	9
Qualified KG teachers	0
Other teacher trainings	0
Qualified assistant KG teachers	0
Others	0

\* Excluding staff serving aged 0-2

Teacher to Pupil Ratio (Data as of Sept. 2022)	
Teacher to pupil ratio in morning session	1 : 7.8
Teacher to pupil ratio in afternoon session	1 : 6.5
Ratio includes classes aged 2-3	Yes

No. of Enrolment (Data as of Sept. 2022)				
	Nursery	Lower KG	Upper KG	Total
AM Session	3	8	3	14
PM Session	0	0	0	0
WD Session	14	18	17	49

Annual Fees (2023 / 24 School Year)				
		Nursery	Lower KG	Upper KG
Annual Fees After Deduction of Government Subsidy (No. of Instalment)	AM Session	Free	Free	Free
	PM Session	Free	Free	Free
	WD Session	\$15,864 (12)	\$15,864 (12)	\$15,864 (12)

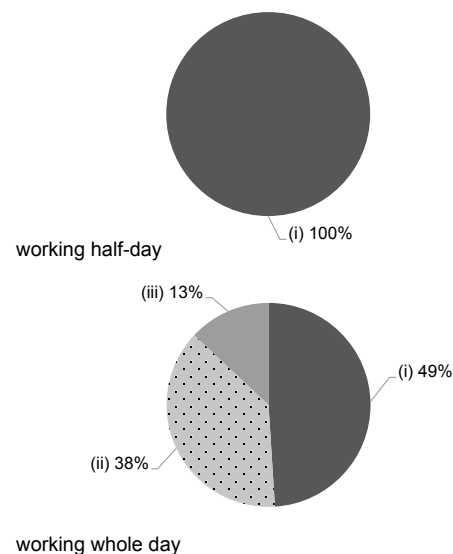
Please refer to the Fees Certificate for details of fees information.

Child Care Services (Data as of Sept. 2022)			
With child care services for children aged 2-3	Yes	With child care services for children aged under 2	No
Fee level (per annum)	\$33,600 (half - day)	No. of enrolment aged 2-3	7
	\$58,596 (full - day)	Joining Child Care Centre Subsidy Scheme	No
Providing occasional child care services	No	Providing extended hours services	No

Curriculum Details	
Curriculum type : Local	
Curriculum planning	
<p>-To create a pleasant study atmosphere for the children, with the objective of cultivating the children's all-around development on spiritual, moral, intellectual, physical, social and aesthetic aspects. - To lay emphasis on the active children learning and set an appropriate learning goal, content and activity with the needs of physical and mental development. - To inspire thinking, develop the problem solving skills, and build self-confidence, self-reliance and responsibility as well as to realize the children's full potential.</p> <p>We will follow the "Kindergarten Education Curriculum Guide" (2017) to plan curriculum. Children of nursery classes will not be asked to write, and there will not be mechanical copying exercises and drills on calculation.</p>	
Learning / Teaching approach & activities	
<p>With theme activities teaching methods adopted, diversified and comprehensive activities are arranged. Children can experience the daily life knowledge by different learning activities, such as visiting, cooperation and project-based learning. Every child is taken into consideration and has the participation opportunity via group learning.</p>	
Assessment of children's learning experiences	
<p>Children's learning effectiveness is recorded by continuous observation and assessment. Proper tutor can follow children's individual requirement.</p>	

Monthly salary range of principal & teaching staff (Data as of Mar. 2023)

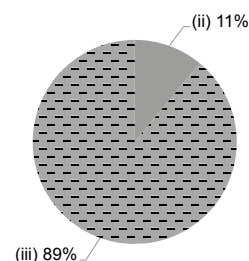
- (i) ≤ \$30,000
- (ii) \$30,001 - \$40,000
- (iii) > \$40,000



School Characteristics	
School vision and mission	
<p>Adhering to the Christian Spirit, high quality education is provided to allow children to find pleasure in learning, fostering good communication skills, having courage to carry responsibilities and dare to innovate, and then to make good learning foundation.</p>	
Support to students	
<p>Children's spiritual education is specifically assigned by the religion education officer. -Social Service Department is set up to offer supported services, like the professional tutor for the families and children in demand. - Dental clinic is established to provide dental care services. - The church can offer tuition subsidy for the families in financial needs. - New students orientation week and small-scale simulation activities are set up.</p>	
Support to non-Chinese speaking (NCS) students	
<p>Received Grant for Support to NCS Students; create an enriched language environment for mastery of the Chinese language; create an inclusive learning environment to facilitate students' integration; facilitate professional development for teachers to develop effective strategies to help NCS students learn Chinese.</p>	
Support to students with special needs	
<p>Joining the On-site Pre-school Rehabilitation Services.</p>	
Link with parents	
<p>Parent-teacher association : Yes</p>	
Other activities / communication with parents	
<p>- Parents can know children's learning situation through the announcement, interview and family visit. - On-campus voluntary work and diversified parent-child activities promoted to establish partner relationship. - Home school activities: parents' day, parents' classes observation, lectures, fellowship, voluntary teams, and parent-child creativity, guide-reading, story-telling, game day, and travel. - Parent-Teacher Association has been established in 2018 to promote home-school co-operation.</p>	

Working experience of principal & teaching staff in pre-primary education (Data as of Mar. 2023)

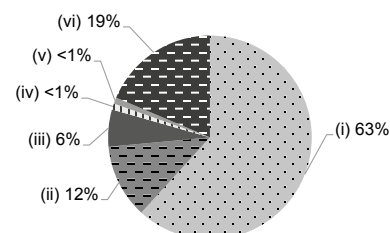
- (i) < 4 years
- (ii) 4 - 7 years
- (iii) > 7 years



2021/22 School Expenditure Information

Expenditure information based on audited account Yes

- (i) salary of principal & teaching staff
- (ii) non-teaching staff salary
- (iii) rent, management fees, rates & government rent
- (iv) teaching resources
- (v) staff training & professional development
- (vi) other expenses



Price of Major School Items (2022 / 23 School Year)			
Summer uniform	\$105-160 / set	Winter uniform	\$335-416 / set
School bag	\$90 / each	Tea and snacks	\$1,560 / year
Textbooks	\$340-868 / year	Exercise books/ workbooks	\$32-612 / year
Stationery	\$329-421 / year	Bedding items	No such item