



ST. DOMINIC ANGLO-CHINESE KINDERGARTEN

Hong Kong
East

Address : KINDERGARTEN A, ANNEX TO BLOCK 1,
100 SHING TAI ROAD, HENG FA CHUEN, CHAI WAN,
HONG KONG

Tel. : 2897 0701

Fax. : 2505 3581

Joining
2023/24 KG Education Scheme

School No. 325457

Location No. 0001

School Information	
School Category	Non-profit-making
Student Category	Co-educational
Name of School Supervisor	MS LAM ME YIN
Name of School Principal	MS YUNG MEI KEI MAGGIE
School Founding Year	1986
Total No. of Permitted Accommodation of Classrooms in Use (Data as of Sept. 2022)	213
Number of Registered Classrooms	10
Outdoor Playground	Yes
Indoor Playground	Yes
Music Room	Yes
Other Special Room(s) / Area(s)	No information
Total No. of Principal & Teaching Staff (Data as of Sept. 2022) *	17
School Website	http://www.stdominic.edu.hk
Quality Review : Result and Report	Meeting the prescribed standards https://www.edb.gov.hk/attachment/tc/edu-system/preprimary-kindergarten/quality-assurance-frame-work/qr/qr-report/StDominic_AC.pdf

No. & Qualification of Principal & Teaching Staff (Data as of Sept. 2022) *	
Academic Qualification	
Degree holders	7
Non-degree holders	10
Professional Qualification	
C(ECE) or above	17
Qualified KG teachers	0
Other teacher trainings	0
Qualified assistant KG teachers	0
Others	0

* Excluding staff serving aged 0-2

Teacher to Pupil Ratio (Data as of Sept. 2022)	
Teacher to pupil ratio in morning session	1 : 9.4
Teacher to pupil ratio in afternoon session	1 : 7.2
Ratio includes classes aged 2-3	Yes

No. of Enrolment (Data as of Sept. 2022)				
	Nursery	Lower KG	Upper KG	Total
AM Session	29	35	39	103
PM Session	0	0	0	0
WD Session	17	11	8	36

Annual Fees (2023 / 24 School Year)				
		Nursery	Lower KG	Upper KG
Annual Fees After Deduction of Government Subsidy (No. of Instalment)	AM Session	Free	Free	Free
	PM Session	Free	Free	Free
	WD Session	\$11,280 (10)	\$11,280 (10)	\$11,280 (10)

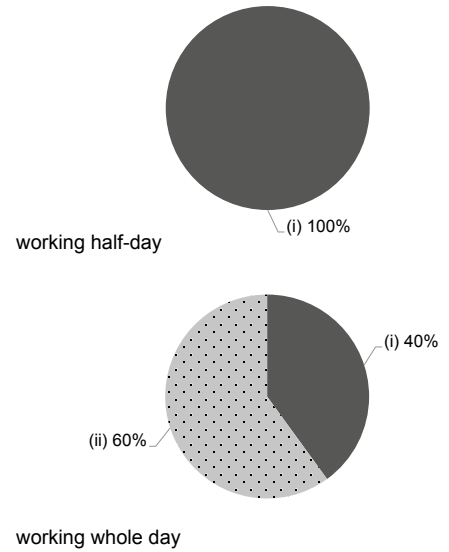
Please refer to the Fees Certificate for details of fees information.

Child Care Services (Data as of Sept. 2022)			
With child care services for children aged 2-3	Yes	With child care services for children aged under 2	No
Fee level (per annum)	\$35,040 (half - day)	No. of enrolment aged 2-3	20
	- (full - day)	Joining Child Care Centre Subsidy Scheme	No
Providing occasional child care services	No	Providing extended hours services	No

Curriculum Details	
Curriculum type : Local	
Curriculum planning	
<p>To adopt theme-based discussion and arrange courses with progressive and spiral teaching mode according to children's development, interest and ability. Courses focus on the learning of children language, intelligence, social contact and sense etc.</p> <p>We will follow the "Kindergarten Education Curriculum Guide" (2017) to plan curriculum. Children of nursery classes will not be asked to write, and there will not be mechanical copying exercises and drills on calculation.</p>	
Learning / Teaching approach & activities	
<p>To arrange games full of knowledge and give children more self-determined space in the activities to experience, explore, think and learn new knowledge from learning process and develop self-confidence. Participate in community activities and make full use of community facilities.</p>	
Assessment of children's learning experiences	
<p>To constantly assess, record and analyze children's performance at school and know their learning progress from the parent-child letter of commitment.</p>	

Monthly salary range of principal & teaching staff
(Data as of Mar. 2023)

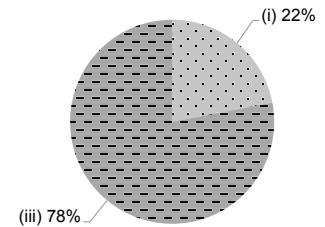
- (i) ≤ \$30,000
- (ii) \$30,001 - \$40,000
- (iii) > \$40,000



School Characteristics	
School vision and mission	
<p>To cultivate children to learn positively and promote them to build knowledge, skills and attitudes for balanced development and lay solid foundation of study.</p>	
Support to students	
<p>Adaptation week for new students, transition courses from kindergarten to primary school, counselling for non-Chinese speaking students and tutoring for individual child or support services of professional organizations.</p>	
Support to non-Chinese speaking (NCS) students	
<p>Received Grant for Support to NCS Students; appoint additional teaching staff / teaching assistants to support NCS students learning Chinese; create an enriched language environment for mastery of the Chinese language; create an inclusive learning environment to facilitate students' integration.</p>	
Support to students with special needs	
<p>Joining the On-site Pre-school Rehabilitation Services. School Social Work Service</p>	
Link with parents	
<p>Parent-teacher association : No</p>	
Other activities / communication with parents	
<p>Face to face communication, parents' meetings, telephone contact, online learning platform, parents volunteers, parents' involvement in classroom observation, "story mother", parents' lectures, parent-child travel, parent-child reading partner plan.</p>	

Working experience of principal & teaching staff
in pre-primary education
(Data as of Mar. 2023)

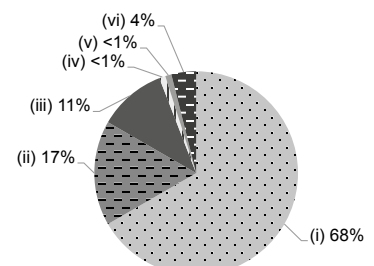
- (i) < 4 years
- (ii) 4 - 7 years
- (iii) > 7 years



2021/22 School Expenditure Information

Expenditure information based on audited account Yes

- (i) salary of principal & teaching staff
- (ii) non-teaching staff salary
- (iii) rent, management fees, rates & government rent
- (iv) teaching resources
- (v) staff training & professional development
- (vi) other expenses



Price of Major School Items (2022 / 23 School Year)			
Summer uniform	\$500-700 / set	Winter uniform	\$700-900 / set
School bag	\$74 / each	Tea and snacks	\$600 / year
Textbooks	\$600 / year	Exercise books/ workbooks	\$150 / year
Stationery	\$19 / year	Bedding items	No such item