



HOP YAT CHURCH CHAN PAK WANG MEMORIAL KINDERGARTEN

Hong Kong East

Address : G/F - 2/F & LANDING FLOOR BETWEEN 3-4/F,
48 CLOUD VIEW ROAD, NORTH POINT, HONG KONG

Joining
2023/24 KG Education Scheme

School No. 325163

Location No. 0001

Tel. : 2578 5759

Fax. : 2571 5887

School Information	
School Category	Non-profit-making
Student Category	Co-educational
Name of School Supervisor	MADAM YEUNG PUI LING
Name of School Principal	MS NG FUNG PING
School Founding Year	1984
Total No. of Permitted Accommodation of Classrooms in Use (Data as of Sept. 2022)	284
Number of Registered Classrooms	9
Outdoor Playground	Yes
Indoor Playground	Yes
Music Room	No
Other Special Room(s) / Area(s)	small library and a school hall
Total No. of Principal & Teaching Staff (Data as of Sept. 2022) *	20
School Website	http://hyccpwmkg.edu.hk
Quality Review : Result and Report	Meeting the prescribed standards https://www.edb.gov.hk/attachment/en/edu-system/preprimary-kindergarten/quality-assurance-frame-work/qr/qr-report/HYC_ChonPakWang.pdf

No. & Qualification of Principal & Teaching Staff (Data as of Sept. 2022) *	
Academic Qualification	
Degree holders	11
Non-degree holders	9
Professional Qualification	
C(ECE) or above	20
Qualified KG teachers	0
Other teacher trainings	0
Qualified assistant KG teachers	0
Others	0

* Excluding staff serving aged 0-2

Teacher to Pupil Ratio (Data as of Sept. 2022)	
Teacher to pupil ratio in morning session	1 : 8.2
Teacher to pupil ratio in afternoon session	1 : 4.9
Ratio includes classes aged 2-3	Yes

No. of Enrolment (Data as of Sept. 2022)				
	Nursery	Lower KG	Upper KG	Total
AM Session	21	33	25	79
PM Session	13	6	11	30
WD Session	18	12	19	49

Annual Fees (2023 / 24 School Year)				
		Nursery	Lower KG	Upper KG
Annual Fees After Deduction of Government Subsidy (No. of Instalment)	AM Session	Free	Free	Free
	PM Session	Free	Free	Free
	WD Session	\$14,500 (10)	\$14,500 (10)	\$14,500 (10)

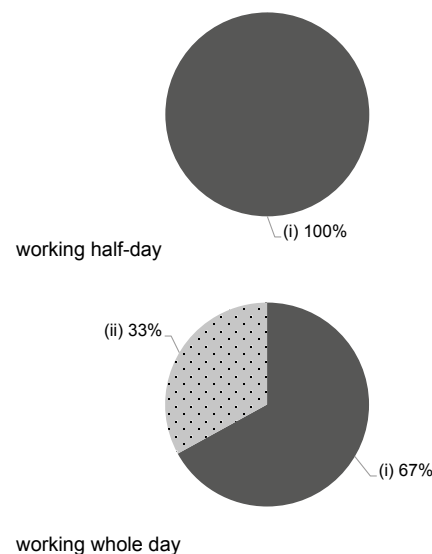
Please refer to the Fees Certificate for details of fees information.

Child Care Services (Data as of Sept. 2022)			
With child care services for children aged 2-3	Yes	With child care services for children aged under 2	No
Fee level (per annum)	\$34,980 (half - day)	No. of enrolment aged 2-3	28
	\$61,800 (full - day)	Joining Child Care Centre Subsidy Scheme	No
Providing occasional child care services	No	Providing extended hours services	No

Curriculum Details	
Curriculum type : Local	
Curriculum planning	
<p>According to children's growth, development and life experience, targets and programmes are designed with a step-by-step approach and in a spiral way. Learning materials that can inspire multiple intelligences are used to provide happy fundamental learning experience for children. Moreover, it aims to cultivate religion, character and environmental education.</p> <p>We will follow the "Kindergarten Education Curriculum Guide" (2017) to plan curriculum. Children of nursery classes will not be asked to write, and there will not be mechanical copying exercises and drills on calculation.</p>	
Learning / Teaching approach & activities	
<p>Themes are used in progressing integrated teaching activities, and there are group discussion and thematic grouping study. Inspire children's thinking, imagination and creativity through simulation, role-play, practice, visit and exploring game.</p>	
Assessment of children's learning experiences	
<p>Children's Development Rating Scale is adopted to give a continuous record of children's learning and growth. The school also collects data and deepens the knowledge of children's family life. Together with children's school performance, the school reports the results to individual parent. Every semester the school distributes children development reports, attached with teacher's observations and suggestions, so that parents can better understand their children's development characteristics.</p>	

Monthly salary range of principal & teaching staff (Data as of Mar. 2023)

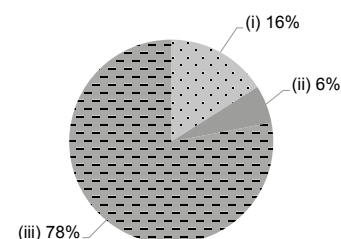
- (i) ≤ \$30,000
- (ii) \$30,001 - \$40,000
- (iii) > \$40,000



School Characteristics	
School vision and mission	
<p>Create a learning environment that is full of love, children-centered, safe and healthy. Through the home-school cooperation, cultivate children's balanced development on the moral, intellectual, physical, collective, aesthetic and spiritual aspects.</p>	
Support to students	
<p>Freshman adaptation period, parents phased companion; simulation weeks of freshman life in primary school; individual tutoring and referral services provided by school-based social workers to children in need.</p>	
Support to non-Chinese speaking (NCS) students	
<p>Received Grant for Support to NCS Students; appoint additional teaching staff / teaching assistants to support NCS students learning Chinese; arrange interpretation / translation services; create an enriched language environment for mastery of the Chinese language; create an inclusive learning environment to facilitate students' integration; collaborate with non-governmental organisations (NGOs) to create an inclusive learning environment; facilitate professional development for teachers to develop effective strategies to help NCS students learn Chinese; small group tutoring</p>	
Support to students with special needs	
<p>Joining the On-site Pre-school Rehabilitation Services. Individual tutoring and referral services provided by social workers to children in need.</p>	
Link with parents	
Parent-teacher association : Yes	
Other activities / communication with parents	
<p>Parenting education: seminars, parent groups, school briefing, primary school choices and lectures on adaptation, parents' workshops provided by school-based social workers. Home-school activities: parents' day, parent-child travel, reading and character education. Contact / communication: through notices, notes, manuals, supplemented by interviews and phone calls.</p>	

Working experience of principal & teaching staff in pre-primary education (Data as of Mar. 2023)

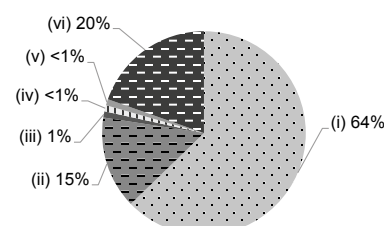
- (i) < 4 years
- (ii) 4 - 7 years
- (iii) > 7 years



2021/22 School Expenditure Information

Expenditure information based on audited account Yes

- (i) salary of principal & teaching staff
- (ii) non-teaching staff salary
- (iii) rent, management fees, rates & government rent
- (iv) teaching resources
- (v) staff training & professional development
- (vi) other expenses



Price of Major School Items (2022 / 23 School Year)

Summer uniform	\$300 / set	Winter uniform	\$484-819 / set
School bag	\$58 / each	Tea and snacks	\$1,430 / year
Textbooks	\$842-1,000 / year	Exercise books/ workbooks	\$50-75 / year
Stationery	\$36-75 / year	Bedding items	No such item