



Kwun Tong

SHIN YAT TONG ON YAT KINDERGARTEN

Joining
2023/24 KG Education SchemeAddress : G/F - 1/F, ON YAT HOUSE, SHUN ON ESTATE,
KWUN TONG, KOWLOON

School No. 324426

Location No. 0001

Tel. : 2345 1222

Fax. : 2344 6013

School Information	
School Category	Non-profit-making
Student Category	Co-educational
Name of School Supervisor	MR KWAN CHI KEUNG
Name of School Principal	MS MAK FUNG CHEUNG
School Founding Year	1990
Total No. of Permitted Accommodation of Classrooms in Use (Data as of Sept. 2022)	201
Number of Registered Classrooms	10
Outdoor Playground	Yes
Indoor Playground	Yes
Music Room	Yes
Other Special Room(s) / Area(s)	Children Supporting Room, Explorative Corner, School Library, I.T. Corner, School Hall
Total No. of Principal & Teaching Staff (Data as of Sept. 2022) *	18
School Website	http://www.syt.edu.hk
Quality Review : Result and Report	Meeting the prescribed standards https://www.edb.gov.hk/attachment/tc/edu-system/primary-kindergarten/quality-assurance-frame-work/qr/qr-report/SYT_OnYat.pdf

No. & Qualification of Principal & Teaching Staff (Data as of Sept. 2022) *	
Academic Qualification	
Degree holders	16
Non-degree holders	2
Professional Qualification	
C(ECE) or above	18
Qualified KG teachers	0
Other teacher trainings	0
Qualified assistant KG teachers	0
Others	0

* Excluding staff serving aged 0-2

Teacher to Pupil Ratio (Data as of Sept. 2022)	
Teacher to pupil ratio in morning session	1 : 7.2
Teacher to pupil ratio in afternoon session	1 : 7.3
Ratio includes classes aged 2-3	No

No. of Enrolment (Data as of Sept. 2022)				
	Nursery	Lower KG	Upper KG	Total
AM Session	1	4	1	6
PM Session	0	0	0	0
WD Session	30	44	50	124

Annual Fees (2023 / 24 School Year)				
		Nursery	Lower KG	Upper KG
Annual Fees After Deduction of Government Subsidy (No. of Instalment)	AM Session	Free	Free	Free
	PM Session	-	-	-
	WD Session	\$8,568 (12)	\$8,568 (12)	\$8,568 (12)

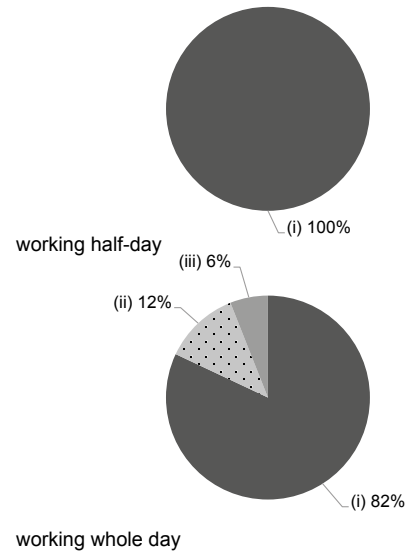
Please refer to the Fees Certificate for details of fees information.

Child Care Services (Data as of Sept. 2022)			
With child care services for children aged 2-3	-	With child care services for children aged under 2	-
Fee level (per annum)	(half - day)	No. of enrolment aged 2-3	0
	(full - day)	Joining Child Care Centre Subsidy Scheme	-
Providing occasional child care services	-	Providing extended hours services	-

Curriculum Details	
Curriculum type : Local	
Curriculum planning	
<p>Under the Confucian education philosophy of Shin Yat Tong and the "Pre-primary Education Curriculum Guide" from Education Bureau, the integrated curriculum is prepared according to the needs, abilities, life experiences and interests of different stages of early childhood development. The contents of teaching are diversified, so that children can have comprehensive and well-balanced development.</p> <p>We will follow the "Kindergarten Education Curriculum Guide" (2017) to plan curriculum. Children of nursery classes will not be asked to write, and there will not be mechanical copying exercises and drills on calculation.</p>	
Learning / Teaching approach & activities	
<p>The curriculum is developed on the child-centered basis. The thematic teaching and project approach are adopted. In the form of groups, children learn by doing and building knowledge from experience through exploration, games, experiments, outing visits, data collection, discussion and sharing.</p>	
Assessment of children's learning experiences	
<p>By continuous classroom observation on children's performance at different stages and collection of their classwork, teachers talk with parents to understand children's development in ability and learning needs.</p>	

Monthly salary range of principal & teaching staff (Data as of Mar. 2023)

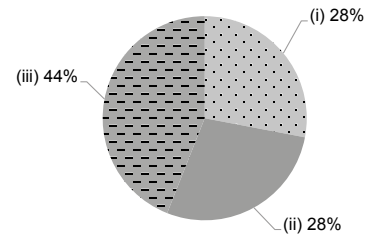
- (i) ≤ \$30,000
- (ii) \$30,001 - \$40,000
- (iii) > \$40,000



School Characteristics	
School vision and mission	
<p>With the belief of Shin Yat Tong as "Treasure is kindness" and Confucianism ideology, our school promotes moral ethics through "benevolence" and "love". It endeavors to provide child-centered and quality education for all-round development, thus establishing a good foundation for children's learning. With professional teamwork spirit, it creates a pleasant learning environment that fosters self-confidence and positive attitude towards learning, so that children can master the skills for problem-solving and live happily by exerting spirit of perseverance and courage to bear social responsibility. It also creates an atmosphere full of communion and fraternity, with commitment to offer new exploration in diversified education.</p>	
Support to students	
<p>Adaption week for newcomers, offer emotional counseling. Resident social workers and support services for children with special learning needs. We work closely with primary schools to provide interface each other. Regarding the minority students, we offer learning supports and build up the culture of inclusion.</p>	
Support to non-Chinese speaking (NCS) students	
<p>Received Grant for Support to NCS Students; appoint additional teaching staff / teaching assistants to support NCS students learning Chinese; arrange interpretation / translation services; C for Chinese @JC</p>	
Support to students with special needs	
<p>Joining the On-site Pre-school Rehabilitation Services.</p>	
Link with parents	
<p>Parent-teacher association : Yes</p>	
Other activities / communication with parents	
<p>On-site Social Worker, Parent Day before the commencement of school year, School Open Day, providing learning portfolio on Parent Day, travels, game day, class observation for parents, parental seminars, various parent-child competitions, volunteer group, school website etc.</p>	

Working experience of principal & teaching staff in pre-primary education (Data as of Mar. 2023)

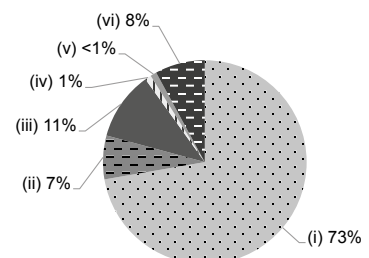
- (i) < 4 years
- (ii) 4 - 7 years
- (iii) > 7 years



2021/22 School Expenditure Information

Expenditure information based on audited account Yes

- (i) salary of principal & teaching staff
- (ii) non-teaching staff salary
- (iii) rent, management fees, rates & government rent
- (iv) teaching resources
- (v) staff training & professional development
- (vi) other expenses



Price of Major School Items (2022 / 23 School Year)

Summer uniform	\$108-127 / set	Winter uniform	\$130-200 / set
School bag	\$96 / each	Tea and snacks	\$2,640-3,960 / year
Textbooks	\$600 / year	Exercise books/ workbooks	\$400 / year
Stationery	\$300 / year	Bedding items	\$200 / set