



STAR OF THE SEA CATHOLIC KINDERGARTEN

Hong Kong
East

Address : PORTION OF 4/F & 5/F, 200 CHAI WAN ROAD,
HONG KONG

Tel. : 2558 8836

Fax. : 2556 9730

Joining
2023/24 KG Education Scheme

School No. 324094

Location No. 0001

School Information	
School Category	Non-profit-making
Student Category	Co-educational
Name of School Supervisor	MS CHAN CHI MAN
Name of School Principal	MS PANG WING LAN
School Founding Year	1976
Total No. of Permitted Accommodation of Classrooms in Use (Data as of Sept. 2022)	74
Number of Registered Classrooms	8
Outdoor Playground	Yes
Indoor Playground	Yes
Music Room	Yes
Other Special Room(s) / Area(s)	Reading Corner, Arts & Crafts Room, Fun Fun Room
Total No. of Principal & Teaching Staff (Data as of Sept. 2022) *	6
School Website	https://www.starkg.edu.hk
Quality Review : Result and Report	Meeting the prescribed standards https://www.edb.gov.hk/attachment/en/edu-system/primary-kindergarten/quality-assurance-frame-work/qr/qr-report/StarOfSeaCatholic.pdf

No. & Qualification of Principal & Teaching Staff (Data as of Sept. 2022) *	
Academic Qualification	
Degree holders	3
Non-degree holders	3
Professional Qualification	
C(ECE) or above	6
Qualified KG teachers	0
Other teacher trainings	0
Qualified assistant KG teachers	0
Others	0

* Excluding staff serving aged 0-2

Teacher to Pupil Ratio (Data as of Sept. 2022)	
Teacher to pupil ratio in morning session	1 : 9.8
Teacher to pupil ratio in afternoon session	1 : 8.8
Ratio includes classes aged 2-3	No

No. of Enrolment (Data as of Sept. 2022)				
	Nursery	Lower KG	Upper KG	Total
AM Session	4	2	0	6
PM Session	0	0	0	0
WD Session	13	17	23	53

Annual Fees (2023 / 24 School Year)				
		Nursery	Lower KG	Upper KG
Annual Fees After Deduction of Government Subsidy (No. of Instalment)	AM Session	Free	Free	Free
	PM Session	Free	Free	Free
	WD Session	Free	Free	Free

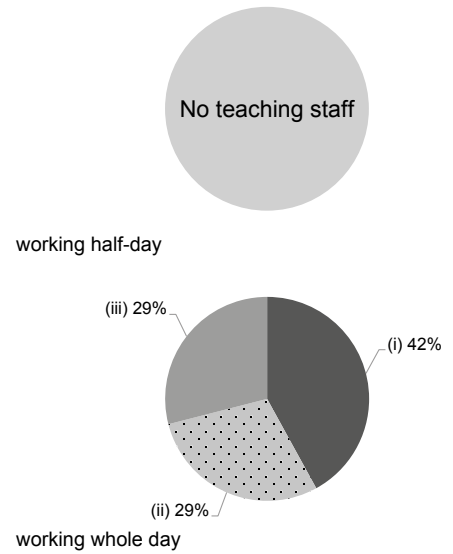
Please refer to the Fees Certificate for details of fees information.

Child Care Services (Data as of Sept. 2022)			
With child care services for children aged 2-3	-	With child care services for children aged under 2	-
Fee level (per annum)	(half - day)	No. of enrolment aged 2-3	0
	(full - day)	Joining Child Care Centre Subsidy Scheme	-
Providing occasional child care services	-	Providing extended hours services	-

Curriculum Details	
Curriculum type : Local	
Curriculum planning	
<p>The core of curriculum framework is children-centered and on the children's four development goals basis. Considering the school's learning goals, it formulates the courses by which children can learn knowledge pleasantly, safely and effectively and finally have balanced development.</p> <p>We will follow the "Kindergarten Education Curriculum Guide" (2017) to plan curriculum. Children of nursery classes will not be asked to write, and there will not be mechanical copying exercises and drills on calculation.</p>	
Learning / Teaching approach & activities	
<p>Pursuing the teaching methods such as theme-based learning, small group learning, corner activities and project approach to make children acquire knowledge, manner and skill by themselves and then release their potential abilities. Meanwhile the cultivation of religious and moral education can let children know Jesus and treat people with love and services and grow up in the environment of loving and being loved.</p>	
Assessment of children's learning experiences	
<p>To draw up specific assessment details together with proper tools such as activity records, anecdotal records, conversations with children and photo records, constantly and systematically observe, analyze and evaluate the children's learning and development.</p>	

Monthly salary range of principal & teaching staff
(Data as of Mar. 2023)

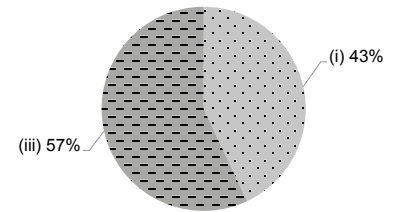
- (i) ≤ \$30,000
- (ii) \$30,001 - \$40,000
- (iii) > \$40,000



School Characteristics	
School vision and mission	
<p>We adhere to Catholicism's spirit of love and serving as the foundations of our school education, and learn the virtues of love, humility, gentleness, and patience from Our Lady, Star of the Sea. We are committed to providing children with a diverse and quality education that can foster their initiative and positive attitude when facing difficulties, and to let them grow up happily in a life of faithfulness, trust, filial piety, and love.</p>	
Support to students	
<p>The school understands the parents and children's needs through effective communication, responses to the community and particular family background and takes good advantage of community resources and school base to provide applicable community information and support. Parents can have a general idea about the current status of education and social welfare policy through meetings and lectures. The school encourages the cooperation with the families and hopes to be the partner in nurturing the children. The school has a school-based social work service to provide support for children and their families in need.</p>	
Support to non-Chinese speaking (NCS) students	
<p>Create an enriched language environment for mastery of the Chinese language.</p>	
Support to students with special needs	
<p>Joining the On-site Pre-school Rehabilitation Services. Joining the Caritas On-site Pre-school Rehabilitation Services and School Social Worker Service.</p>	
Link with parents	
<p>Parent-teacher association : No</p>	
Other activities / communication with parents	
<p>The school often holds parents' lectures, workshops, classroom observation, parent-child creation, parent-child travel, reading plans, parent groups, visits and other activities, also invites parents to be volunteers, so that they can better know their children's learning and growth.</p>	

Working experience of principal & teaching staff in pre-primary education
(Data as of Mar. 2023)

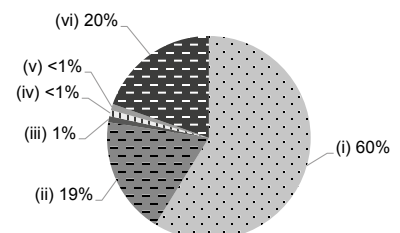
- (i) < 4 years
- (ii) 4 - 7 years
- (iii) > 7 years



2021/22 School Expenditure Information

Expenditure information based on audited account Yes

- (i) salary of principal & teaching staff
- (ii) non-teaching staff salary
- (iii) rent, management fees, rates & government rent
- (iv) teaching resources
- (v) staff training & professional development
- (vi) other expenses



Price of Major School Items (2022 / 23 School Year)			
Summer uniform	\$341 / set	Winter uniform	\$731 / set
School bag	\$59 / each	Tea and snacks	\$1,300 / year
Textbooks	\$683-890 / year	Exercise books/ workbooks	\$25-30 / year
Stationery	\$64-84 / year	Bedding items	No such item