



CARITAS ST. FRANCIS KINDERGARTEN

North

Address : UNIT KG01, 2/F, ANCILLARY FACILITIES BLOCK,
PO SHEK WU ESTATE, SHEUNG SHUI,
NEW TERRITORIES

Tel. : 2328 6828

Fax. : 2328 3613

Joining
2023/24 KG Education Scheme

School No. 320544

Location No. 0002

School Information	
School Category	Non-profit-making
Student Category	Co-educational
Name of School Supervisor	MADAM LEUNG CHI KIN GLORIA
Name of School Principal	MS MOK WING YAN
School Founding Year	1968
Total No. of Permitted Accommodation of Classrooms in Use (Data as of Sept. 2022)	20
Number of Registered Classrooms	6
Outdoor Playground	No
Indoor Playground	Yes
Music Room	Yes
Other Special Room(s) / Area(s)	Parent - child Reading Area, Interactive Sensory Area
Total No. of Principal & Teaching Staff (Data as of Sept. 2022) *	4
School Website	http://sfkg.caritas.org.hk
Quality Review : Result and Report	Meeting the prescribed standards https://www.edb.gov.hk/attachment/en/edu-system/preprimary-kindergarten/quality-assurance-frame-work/qr/qr-report/Caritas_StFrancis.pdf

No. & Qualification of Principal & Teaching Staff (Data as of Sept. 2022) *	
Academic Qualification	
Degree holders	3
Non-degree holders	1
Professional Qualification	
C(ECE) or above	4
Qualified KG teachers	0
Other teacher trainings	0
Qualified assistant KG teachers	0
Others	0

* Excluding staff serving aged 0-2

Teacher to Pupil Ratio (Data as of Sept. 2022)	
Teacher to pupil ratio in morning session	1 : 3.3
Teacher to pupil ratio in afternoon session	1 : 3.3
Ratio includes classes aged 2-3	No

No. of Enrolment (Data as of Sept. 2022)				
	Nursery	Lower KG	Upper KG	Total
AM Session	0	0	0	0
PM Session	0	0	0	0
WD Session	0	4	9	13

Annual Fees (2023 / 24 School Year)				
		Nursery	Lower KG	Upper KG
Annual Fees After Deduction of Government Subsidy (No. of Instalment)	AM Session	Free	Free	Free
	PM Session	Free	Free	Free
	WD Session	\$9,790 (11)	\$9,790 (11)	\$9,790 (11)

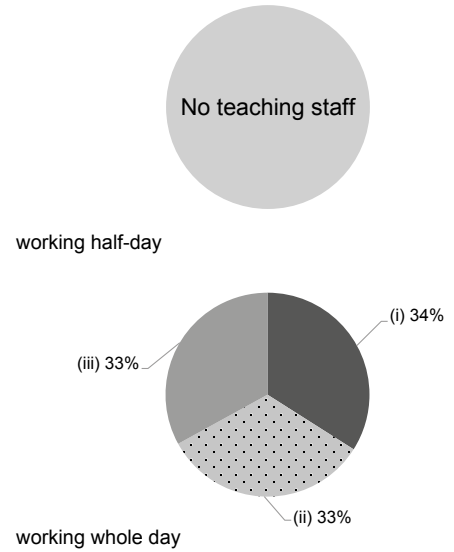
Please refer to the Fees Certificate for details of fees information.

Child Care Services (Data as of Sept. 2022)			
With child care services for children aged 2-3	-	With child care services for children aged under 2	-
Fee level (per annum)	(half - day)	No. of enrolment aged 2-3	0
	(full - day)	Joining Child Care Centre Subsidy Scheme	-
Providing occasional child care services	-	Providing extended hours services	-

Curriculum Details	
Curriculum type : Local	
Curriculum planning	
<p>Curriculum is planned in regard to the interest, physical and psychological development of children. The principle of 'child-oriented' is adopted and various learning domains, including Language, Self and Society, Early Mathematics and Science, Physical Fitness and Health, Art are integrated. Religious and moral education, language education and the development of creative thinking are emphasized.</p> <p>We will follow the "Kindergarten Education Curriculum Guide" (2017) to plan curriculum. Children of nursery classes will not be asked to write, and there will not be mechanical copying exercises and drills on calculation.</p>	
Learning / Teaching approach & activities	
<p>Individual, group and interactive team activities are organized. Integrated Curriculum and Whole Language Learning Approach are adopted. Children are encouraged to re-write stories and to create children rhymes which has laid down their good foundation of language. Shared Reading Approach and Phonemic Awareness are also adopted which has strengthened the children's English ability, including listening, speaking, reading and writing. In addition, the implementation of Project Learning Approach and Situational Learning has nurtured the spontaneous learning and problem solving skills of children. Their creative thinking are also fostered. Moreover, to make good use of Montessori teaching materials in order to cultivate children's self-care and self-discipline abilities, and to enrich their learning in sensory-motor and mathematical concept.</p>	
Assessment of children's learning experiences	
<p>Continuous assessment throughout the school year is adopted. In reference to the age appropriateness of children, the learning progress of each child will be kept in the 'Children Physical and Psychological Development and Learning Record' and 'Individual Learning Portfolio'. Regular individual meetings with parents to discuss the growth and learning plan of children will be conducted twice a year.</p>	

Monthly salary range of principal & teaching staff
(Data as of Mar. 2023)

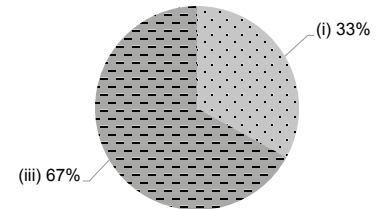
- (i) ≤ \$30,000
- (ii) \$30,001 - \$40,000
- (iii) > \$40,000



School Characteristics	
School vision and mission	
<p>School Motto 'Be Faithful, Diligent and Stay Simple; Love God and One Another'. We aim to foster the balanced and holistic development of young children in social, intellectual, physical, moral, spiritual and aesthetic aspects, as well as to nurture our children full of Loving, initiative Learning and with Leading potential.</p>	
Support to students	
<p>Moral education is emphasized. 'Children Month' and 'Love and Care Campaign' are launched annually in order to develop children's qualities of forgiving, respecting, loving, helping and accepting each other. To facilitate children's adaption to changing environment, mixed age activities, adaption programmes and preparation to primary school life are organized. A cross service and multi-professional on-site support service are available to provide individual learning curriculum and behavioral guidance for children with learning and emotional needs.</p>	
Support to non-Chinese speaking (NCS) students	
<p>Received Grant for Support to NCS Students; appoint additional teaching staff / teaching assistants to support NCS students learning Chinese.</p>	
Support to students with special needs	
<p>Joining the On-site Pre-school Rehabilitation Services.</p>	
Link with parents	
<p>Parent-teacher association : Yes</p>	
Other activities / communication with parents	
<p>Parents Days are organized and parents are invited to school for class observation, and individual parent interview. Various programmes for parents to promote the reading scheme. Parent-teacher cum Alumni Association was established and different activities to build up multi-channel of home-school communication are organized.</p>	

Working experience of principal & teaching staff in pre-primary education
(Data as of Mar. 2023)

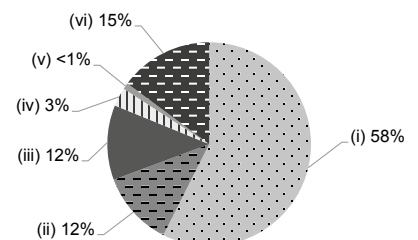
- (i) < 4 years
- (ii) 4 - 7 years
- (iii) > 7 years



2021/22 School Expenditure Information

Expenditure information based on audited account No information

- (i) salary of principal & teaching staff
- (ii) non-teaching staff salary
- (iii) rent, management fees, rates & government rent
- (iv) teaching resources
- (v) staff training & professional development
- (vi) other expenses



Price of Major School Items (2022 / 23 School Year)			
Summer uniform	\$58 / set	Winter uniform	\$65-245 / set
School bag	\$58 / each	Tea and snacks	\$0 / year
Textbooks	\$232-605 / year	Exercise books/ workbooks	\$0 / year
Stationery	\$0 / year	Bedding items	No such item