



**THE CHURCH OF CHRIST IN CHINA
SHUM OI CHURCH KINDERGARTEN**

Sham Shui
Po

Address : G/F, 80 WOH CHAI STREET, SHEK KIP MEI, KOWLOON

Joining
2023/24 KG Education Scheme

School No. 319511

Location No. 0001

Tel. : 2777 0986

Fax. : 2890 8333

School Information	
School Category	Non-profit-making
Student Category	Co-educational
Name of School Supervisor	MR CHAN SHIU CHOY
Name of School Principal	MS LAM HAU YEE
School Founding Year	1967
Total No. of Permitted Accommodation of Classrooms in Use (Data as of Sept. 2022)	113
Number of Registered Classrooms	3
Outdoor Playground	Yes
Indoor Playground	Yes
Music Room	Yes
Other Special Room(s) / Area(s)	Sanctuary (Hall), I.T. room, multi-functional room and garden.
Total No. of Principal & Teaching Staff (Data as of Sept. 2022) *	7
School Website	http://www.sockg.edu.hk
Quality Review : Result and Report	Meeting the prescribed standards https://www.edb.gov.hk/attachment/en/edu-system/preprimary-kindergarten/quality-assurance-frame-work/qr/qr-report/ShumOiCh.pdf

No. & Qualification of Principal & Teaching Staff (Data as of Sept. 2022) *	
Academic Qualification	
Degree holders	6
Non-degree holders	1
Professional Qualification	
C(ECE) or above	7
Qualified KG teachers	0
Other teacher trainings	0
Qualified assistant KG teachers	0
Others	0

* Excluding staff serving aged 0-2

Teacher to Pupil Ratio (Data as of Sept. 2022)	
Teacher to pupil ratio in morning session	1 : 8.7
Teacher to pupil ratio in afternoon session	1 : 8.5
Ratio includes classes aged 2-3	No

No. of Enrolment (Data as of Sept. 2022)				
	Nursery	Lower KG	Upper KG	Total
AM Session	7	8	20	35
PM Session	5	9	11	25
WD Session	10	6	10	26

Annual Fees (2023 / 24 School Year)				
		Nursery	Lower KG	Upper KG
Annual Fees After Deduction of Government Subsidy (No. of Instalment)	AM Session	Free	Free	Free
	PM Session	Free	Free	Free
	WD Session	\$10,500 (10)	\$10,500 (10)	\$10,500 (10)

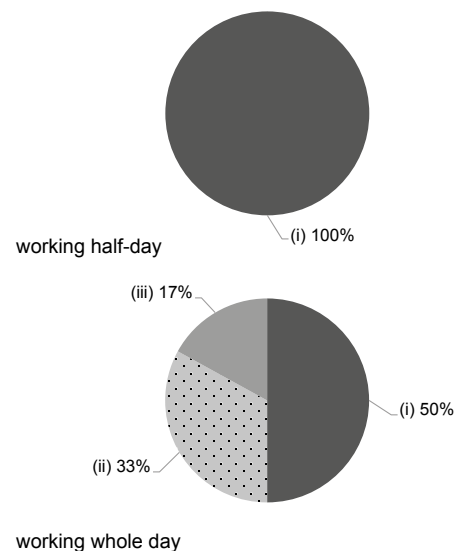
Please refer to the Fees Certificate for details of fees information.

Child Care Services (Data as of Sept. 2022)			
With child care services for children aged 2-3	-	With child care services for children aged under 2	-
Fee level (per annum)	(half - day)	No. of enrolment aged 2-3	0
	(full - day)	Joining Child Care Centre Subsidy Scheme	-
Providing occasional child care services	-	Providing extended hours services	-

Curriculum Details	
Curriculum type : Local	
Curriculum planning	
<p>Relevant courses are designed based on the "Kindergarten Education Curriculum Guide" (2017) and taking into consideration children's physical and psychological development and learning interest so that they learn in enjoyable environment and develop stronger self-directed learning ability. Religious teaching is offered to help foster accurate values and good character. Courses on Putonghua, English language and dance are also offered for multiple learning and help them bring into play their potentials.</p> <p>We will follow the "Kindergarten Education Curriculum Guide" (2017) to plan curriculum. Children of nursery classes will not be asked to write, and there will not be mechanical copying exercises and drills on calculation.</p>	
Learning / Teaching approach & activities	
<p>High Scope and topic studies are adopted, emphasizing voluntary exploration and discussion of children besides mastering the learning skills. Visits in line with the themes learnt are arranged to expand children's life experiences. Parents are prompted to participate for enriching the children's learning areas.</p>	
Assessment of children's learning experiences	
<p>To evaluate children's learning by way of ongoing assessment.</p>	

Monthly salary range of principal & teaching staff
(Data as of Mar. 2023)

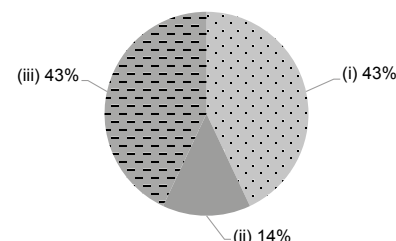
- (i) ≤ \$30,000
- (ii) \$30,001 - \$40,000
- (iii) > \$40,000



School Characteristics	
School vision and mission	
<p>Ours Mission Our Kindergarten has all along upheld the spirit of "Not to be served, but to serve" and the examples of Jesus Christ in pursuit of the principle of equal access to education for all while providing children with equal opportunity to receive quality education and guiding them to a positive growth in morality and intelligence.</p>	
Support to students	
<p>Social worker services, new student adaptation period, group learning, interest classes, primary one simulation activities, visits to primary schools and activities jointly held with community organizations.</p>	
Support to non-Chinese speaking (NCS) students	
<p>Received Grant for Support to NCS Students; appoint additional teaching staff / teaching assistants to support NCS students learning Chinese; arrange interpretation / translation services; engage NCS parent volunteers to enhance communication between school and parents; create an enriched language environment for mastery of the Chinese language; create an inclusive learning environment to facilitate students' integration; collaborate with non-governmental organisations (NGOs) to create an inclusive learning environment; facilitate professional development for teachers to develop effective strategies to help NCS students learn Chinese; participate in school-based professional support programmes organised by EDB.</p>	
Support to students with special needs	
<p>Joining the On-site Pre-school Rehabilitation Services.</p>	
Link with parents	
<p>Parent-teacher association : No</p>	
Other activities / communication with parents	
<p>Parents meetings are held every semester, parent-child hiking, parent-child sports day, parents volunteering team, home-school collaboration, seminar on child education and festive activities.</p>	

Working experience of principal & teaching staff
in pre-primary education
(Data as of Mar. 2023)

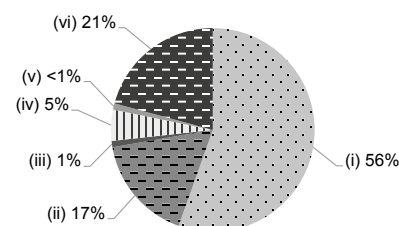
- (i) < 4 years
- (ii) 4 - 7 years
- (iii) > 7 years



2021/22 School Expenditure Information

Expenditure information based on audited account Yes

- (i) salary of principal & teaching staff
- (ii) non-teaching staff salary
- (iii) rent, management fees, rates & government rent
- (iv) teaching resources
- (v) staff training & professional development
- (vi) other expenses



Price of Major School Items (2022 / 23 School Year)			
Summer uniform	\$125 / set	Winter uniform	\$165 / set
School bag	\$47 / each	Tea and snacks	\$900 / year
Textbooks	\$750 / year	Exercise books/ workbooks	\$70-208 / year
Stationery	\$56-132 / year	Bedding items	\$245 / set