



A-ONE KINDERGARTEN

Wong Tai Sin

Address : G/F, KAM HON HOUSE, CHOI HUNG ESTATE,
CHOI HUNG, KOWLOON

Tel. : 2320 4880

Fax. : 2320 4880, 2320 4866

Joining
2023/24 KG Education Scheme

School No. 316504

Location No. 0001

School Information	
School Category	Non-profit-making
Student Category	Co-educational
Name of School Supervisor	MR LAI YAM TING READY
Name of School Principal	MS TSE YUK KWAN
School Founding Year	1964
Total No. of Permitted Accommodation of Classrooms in Use (Data as of Sept. 2022)	122
Number of Registered Classrooms	6
Outdoor Playground	No
Indoor Playground	Yes
Music Room	Yes
Other Special Room(s) / Area(s)	Fitness room
Total No. of Principal & Teaching Staff (Data as of Sept. 2022) *	14
School Website	http://a-onekg.edu.hk
Quality Review : Result and Report	Meeting the prescribed standards https://www.edb.gov.hk/attachment/tc/edu-system/primary-kindergarten/quality-assurance-frame-work/qr/qr-report/A-One.pdf

No. & Qualification of Principal & Teaching Staff (Data as of Sept. 2022) *	
Academic Qualification	
Degree holders	3
Non-degree holders	11
Professional Qualification	
C(ECE) or above	13
Qualified KG teachers	1
Other teacher trainings	0
Qualified assistant KG teachers	0
Others	0

* Excluding staff serving aged 0-2

Teacher to Pupil Ratio (Data as of Sept. 2022)	
Teacher to pupil ratio in morning session	1 : 7.5
Teacher to pupil ratio in afternoon session	1 : 6.7
Ratio includes classes aged 2-3	No

No. of Enrolment (Data as of Sept. 2022)				
	Nursery	Lower KG	Upper KG	Total
AM Session	4	5	2	11
PM Session	0	0	0	0
WD Session	27	35	32	94

Annual Fees (2023 / 24 School Year)				
		Nursery	Lower KG	Upper KG
Annual Fees After Deduction of Government Subsidy (No. of Instalment)	AM Session	Free	Free	Free
	PM Session	Free	Free	Free
	WD Session	Free	Free	Free

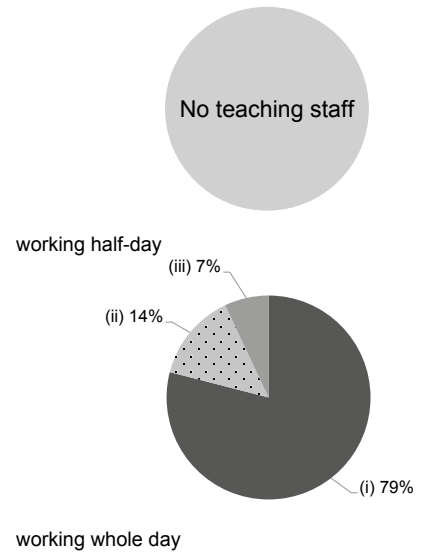
Please refer to the Fees Certificate for details of fees information.

Child Care Services (Data as of Sept. 2022)			
With child care services for children aged 2-3	-	With child care services for children aged under 2	-
Fee level (per annum)	(half - day)	No. of enrolment aged 2-3	0
	(full - day)	Joining Child Care Centre Subsidy Scheme	-
Providing occasional child care services	-	Providing extended hours services	-

Curriculum Details	
Curriculum type : Local	
Curriculum planning	
<p>We arrange the curriculum according to the guidelines of the Education Bureau for the curriculum and children's ages, interests and life experience, so as to cultivate children's imagination, creativity and thinking ability and let children learn happily from play.</p> <p>We will follow the "Kindergarten Education Curriculum Guide" (2017) to plan curriculum. Children of nursery classes will not be asked to write, and there will not be mechanical copying exercises and drills on calculation.</p>	
Learning / Teaching approach & activities	
<p>To meet the needs for children's development, we rely on the HighScope teaching approach and designed activities, supplemented with various visits and group activities.</p>	
Assessment of children's learning experiences	
<p>Record children's academic performances through on-going observation.</p>	

Monthly salary range of principal & teaching staff
(Data as of Mar. 2023)

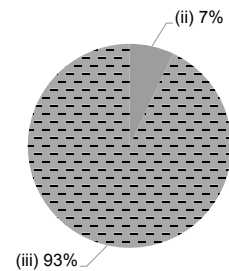
- (i) ≤ \$30,000
- (ii) \$30,001 - \$40,000
- (iii) > \$40,000



School Characteristics	
School vision and mission	
<p>We promote the children's moral, intellectual, physical, social, aesthetic and spiritual development and help children grow in a pleasant learning environment.</p>	
Support to students	
<p>New students adaption period, cooperation with community agencies, arranging high-grade students to visit the primary school buildings and inviting relevant professionals to visit and participate in activities. We will try to help refer students with special needs to relevant agencies.</p>	
Support to non-Chinese speaking (NCS) students	
<p>Received Grant for Support to NCS Students; appoint additional teaching staff / teaching assistants to support NCS students learning Chinese; engage NCS parent volunteers to enhance communication between school and parents; create an enriched language environment for mastery of the Chinese language; create an inclusive learning environment to facilitate students' integration; collaborate with non-governmental organisations (NGOs) to create an inclusive learning environment; facilitate professional development for teachers to develop effective strategies to help NCS students learn Chinese; participate in school-based professional support programmes organised by EDB.</p>	
Support to students with special needs	
<p>Joining the On-site Pre-school Rehabilitation Services.</p>	
Link with parents	
<p>Parent-teacher association : No</p>	
Other activities / communication with parents	
<p>Parents' day, parent class observation, open day, parents' talk, parent-child trip, parent-child Sports Day and parent-child reading programme.</p>	

Working experience of principal & teaching staff in pre-primary education
(Data as of Mar. 2023)

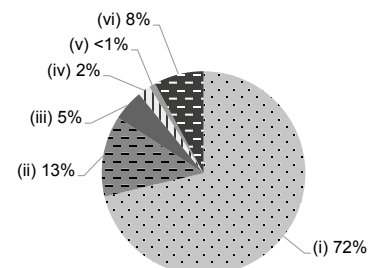
- (i) < 4 years
- (ii) 4 - 7 years
- (iii) > 7 years



2021/22 School Expenditure Information

Expenditure information based on audited account Yes

- (i) salary of principal & teaching staff
- (ii) non-teaching staff salary
- (iii) rent, management fees, rates & government rent
- (iv) teaching resources
- (v) staff training & professional development
- (vi) other expenses



Price of Major School Items (2022 / 23 School Year)

Summer uniform	\$260 / set	Winter uniform	\$615 / set
School bag	\$113 / each	Tea and snacks	\$1,600 / year
Textbooks	\$695-797 / year	Exercise books/workbooks	\$334-489 / year
Stationery	\$314-571 / year	Bedding items	\$44 / set