



CHRIST CHURCH KINDERGARTEN

Kowloon
City

Address : 2/F - 4/F, 5 CHESTER ROAD, KOWLOON TONG,
KOWLOON

Tel. : 2337 3229

Fax. : -

Not Joining
2023/24 KG Education Scheme

School No. 210196

Location No. 0001

School Information	
School Category	Non-profit-making
Student Category	Co-educational
Name of School Supervisor	REV ROYDEN ROSS ERIC
Name of School Principal	MS MOK WINNIE WAI LING
School Founding Year	1969
Total No. of Permitted Accommodation of Classrooms in Use (Data as of Sept. 2022)	214
Number of Registered Classrooms	6
Outdoor Playground	Yes
Indoor Playground	Yes
Music Room	Yes
Other Special Room(s) / Area(s)	Art Room, School Library, Outdoor and Indoor Playground
Total No. of Principal & Teaching Staff (Data as of Sept. 2022) *	19
School Website	http://www.cckg.edu.hk

No. & Qualification of Principal & Teaching Staff (Data as of Sept. 2022) *	
Academic Qualification	
Degree holders	15
Non-degree holders	4
Professional Qualification	
C(ECE) or above	17
Qualified KG teachers	0
Other teacher trainings	1
Qualified assistant KG teachers	0
Others	1

* Excluding staff serving aged 0-2

Teacher to Pupil Ratio (Data as of Sept. 2022)	
Teacher to pupil ratio in morning session	1 : 8.9
Teacher to pupil ratio in afternoon session	-
Ratio includes classes aged 2-3	No

No. of Enrolment (Data as of Sept. 2022)				
	Nursery	Lower KG	Upper KG	Total
AM Session	0	85	84	169
PM Session	0	0	0	0
WD Session	0	0	0	0

Annual Fees (2023 / 24 School Year)				
		Nursery	Lower KG	Upper KG
Annual Fees (No. of Instalment)	AM Session	-	\$70,000 (10)	\$70,000 (10)
	PM Session	-	-	-
	WD Session	-	-	-

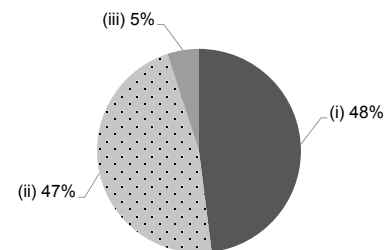
Please refer to the Fees Certificate for details of fees information.

Child Care Services (Data as of Sept. 2022)			
With child care services for children aged 2-3	-	With child care services for children aged under 2	-
Fee level (per annum)	(half - day)	No. of enrolment aged 2-3	0
	(full - day)	Joining Child Care Centre Subsidy Scheme	-
Providing occasional child care services	-	Providing extended hours services	-

Curriculum Details	
Curriculum type : Local	
Curriculum planning	
Integrated model using a thematic approach.	
Learning / Teaching approach & activities	
Interactive with play, discovery and structured activities.	
Assessment of children's learning experiences	
Formative & summative data collected informally.	

Monthly salary range of principal & teaching staff
(Data as of Mar. 2023)

- (i) ≤ \$30,000
- (ii) \$30,001 - \$40,000
- (iii) > \$40,000



working half-day

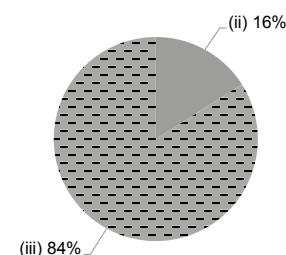


working whole day

School Characteristics	
School vision and mission	
Christian setting - develop values, skills, competencies of life long learners while nurturing students in a supportive, stimulating environment.	
Support to students	
Class, group, individual lessons.	
Support to non-Chinese speaking (NCS) students	
Appoint additional teaching staff / teaching assistants to support NCS students learning Chinese; arrange interpretation / translation services; engage NCS parent volunteers to enhance communication between school and parents; create an enriched language environment for mastery of the Chinese language; create an inclusive learning environment to facilitate students' integration; collaborate with non-governmental organisations (NGOs) to create an inclusive learning environment; facilitate professional development for teachers to develop effective strategies to help NCS students learn Chinese; participate in school-based professional support programmes organised by EDB.	
Support to students with special needs	
Individually tailored programme.	
Link with parents	
Parent-teacher association : No	
Other activities / communication with parents	
Meetings, newsletters, conferences, Open-House.	

Working experience of principal & teaching staff
in pre-primary education
(Data as of Mar. 2023)

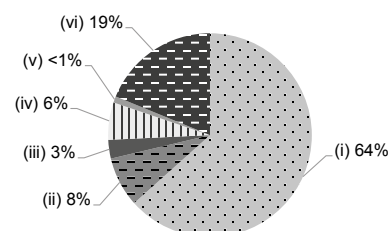
- (i) < 4 years
- (ii) 4 - 7 years
- (iii) > 7 years



2021/22 School Expenditure Information

Expenditure information based on audited account Yes

- (i) salary of principal & teaching staff
- (ii) non-teaching staff salary
- (iii) rent, management fees, rates & government rent
- (iv) teaching resources
- (v) staff training & professional development
- (vi) other expenses



Price of Major School Items (2022 / 23 School Year)			
Summer uniform	No information	Winter uniform	No information
School bag	No information	Tea and snacks	No information
Textbooks	\$0 / year	Exercise books/ workbooks	\$0 / year
Stationery	\$0 / year	Bedding items	No such item