



STEWARDS POOI CHUN KINDERGARTEN

Sha Tin

Address : G/F, BLOCK 2, LEE SHING HOUSE, LEE ON ESTATE,
MA ON SHAN SHATIN, NEW TERRITORIES

Joining
2023/24 KG Education Scheme

School No. 159212

Tel. : 2631 3354

Fax. : 2631 3664

Location No. 0001

School Information	
School Category	Non-profit-making
Student Category	Co-educational
Name of School Supervisor	MS LAW KAM YIN
Name of School Principal	MS CHOW MEI YIN BETTY
School Founding Year	1993
Total No. of Permitted Accommodation of Classrooms in Use (Data as of Sept. 2022)	147
Number of Registered Classrooms	6
Outdoor Playground	No
Indoor Playground	Yes
Music Room	Yes
Other Special Room(s) / Area(s)	Resources room, Library, Creativity corridor, Sensory Games Facilities
Total No. of Principal & Teaching Staff (Data as of Sept. 2022) *	9
School Website	http://www.pooichun.edu.hk
Quality Review : Result and Report	Meeting the prescribed standards https://www.edb.gov.hk/attachment/tc/edu-system/preprimary-kindergarten/quality-assurance-frame-work/qr/qr-report/Stewards_PooiChun.pdf

No. & Qualification of Principal & Teaching Staff (Data as of Sept. 2022) *	
Academic Qualification	
Degree holders	5
Non-degree holders	4
Professional Qualification	
C(ECE) or above	9
Qualified KG teachers	0
Other teacher trainings	0
Qualified assistant KG teachers	0
Others	0

* Excluding staff serving aged 0-2

Teacher to Pupil Ratio (Data as of Sept. 2022)	
Teacher to pupil ratio in morning session	1 : 8.3
Teacher to pupil ratio in afternoon session	1 : 8.7
Ratio includes classes aged 2-3	No

No. of Enrolment (Data as of Sept. 2022)				
	Nursery	Lower KG	Upper KG	Total
AM Session	5	8	10	23
PM Session	0	0	0	0
WD Session	18	11	23	52

Annual Fees (2023 / 24 School Year)				
		Nursery	Lower KG	Upper KG
Annual Fees After Deduction of Government Subsidy (No. of Instalment)	AM Session	Free	Free	Free
	PM Session	-	-	-
	WD Session	\$11,280 (10)	\$11,280 (10)	\$11,280 (10)

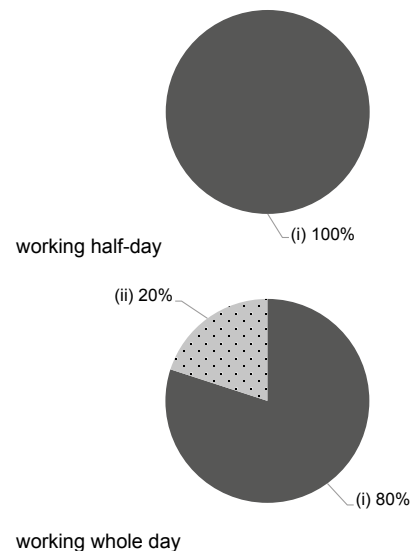
Please refer to the Fees Certificate for details of fees information.

Child Care Services (Data as of Sept. 2022)			
With child care services for children aged 2-3	-	With child care services for children aged under 2	-
Fee level (per annum)	(half - day)	No. of enrolment aged 2-3	0
	(full - day)	Joining Child Care Centre Subsidy Scheme	-
Providing occasional child care services	-	Providing extended hours services	-

Curriculum Details	
Curriculum type : Local	
Curriculum planning	
<p>An integrated curriculum following the "Kindergarten Education Curriculum Guide" to facilitate "Learn through Play". Professional music teacher and dance instructor design tailor-made school-based learning activities according to the ability and interests of children.</p> <p>We will follow the "Kindergarten Education Curriculum Guide" (2017) to plan curriculum. Children of nursery classes will not be asked to write, and there will not be mechanical copying exercises and drills on calculation.</p>	
Learning / Teaching approach & activities	
<p>1. Integrated curriculum with thematic / project approach, supplement with interactive electronic teaching materials. 2. Outdoor and indoor learning activities for the children to discover and exploration. 3. Story-based approach throughout all learning activities, uplifting the children's initiative to learn. 4. Activities involve the use of different senses, and the use of both left and right brain. 5. In-school "Ting-Pen" to assist the parent-kid accompanied reading scheme. 6. The use of online interactive learning platform help to achieve effective learning goals.</p>	
Assessment of children's learning experiences	
<p>Child Growth Profile - recording the development of children and learning assessments. The profile includes creative work records and learning activity records.</p>	

Monthly salary range of principal & teaching staff (Data as of Mar. 2023)

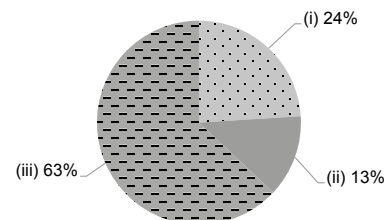
- (i) ≤ \$30,000
- (ii) \$30,001 - \$40,000
- (iii) > \$40,000



School Characteristics	
School vision and mission	
<p>Uphold the attitude "Faith, Hope, Love" and following biblical teachings with understanding of Chinese traditional culture, the school offers well environment, on management organization and facilities, for children to participate in all-round and balanced learning activities.</p>	
Support to students	
<p>Pre-K1 entry activities, with parent accompany, be held in late August, to assist new students get familiar with the school environment and teachers. K3 students will have mock P.1 learning activities, to help them get accustomed to the new primary school life.</p>	
Support to non-Chinese speaking (NCS) students	
<p>Received Grant for Support to NCS Students; engage NCS parent volunteers to enhance communication between school and parents; create an enriched language environment for mastery of the Chinese language; create an inclusive learning environment to facilitate students' integration; collaborate with non-governmental organisations (NGOs) to create an inclusive learning environment; facilitate professional development for teachers to develop effective strategies to help NCS students learn Chinese; participate in school-based professional support programmes organised by EDB.</p>	
Support to students with special needs	
<p>Joining the On-site Pre-school Rehabilitation Services. Joining Caritas Tier On Support Services Project.</p>	
Link with parents	
<p>Parent-teacher association : Yes</p>	
Other activities / communication with parents	
<p>Regular organizations of parents day, seminars for parents, parent-child activities, games day, parents group, tea gathering with the principal and parent volunteering services; Smart campus – Parents can get the latest news about the schools from our webpages or the smart phone using the School App.</p>	

Working experience of principal & teaching staff in pre-primary education (Data as of Mar. 2023)

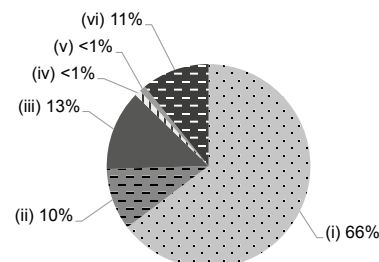
- (i) < 4 years
- (ii) 4 - 7 years
- (iii) > 7 years



2021/22 School Expenditure Information

Expenditure information based on audited account Being Audited

- (i) salary of principal & teaching staff
- (ii) non-teaching staff salary
- (iii) rent, management fees, rates & government rent
- (iv) teaching resources
- (v) staff training & professional development
- (vi) other expenses



Price of Major School Items (2022 / 23 School Year)

Summer uniform	\$340 / set	Winter uniform	\$684 / set
School bag	\$95 / each	Tea and snacks	\$0 / year
Textbooks	\$1,500 / year	Exercise books/ workbooks	\$320 / year
Stationery	\$200 / year	Bedding items	No such item