



Yuen Long

YUEN LONG TUNG KOON DISTRICT ASSOCIATION MRS WONG SIU KEUNG KINDERGARTEN

 Joining
2023/24 KG Education Scheme

 Address : G/F, SHUI CHUEN HOUSE (BLOCK 3), TIN SHUI ESTATE,
YUEN LONG, NEW TERRITORIES

School No. 159115

Location No. 0001

Tel. : 2445 8553

Fax. : 2447 2224

School Information	
School Category	Non-profit-making
Student Category	Co-educational
Name of School Supervisor	MR WONG CHUN KAU CALVIN
Name of School Principal	MS CHENG KA FUNG
School Founding Year	1993
Total No. of Permitted Accommodation of Classrooms in Use (Data as of Sept. 2022)	123
Number of Registered Classrooms	6
Outdoor Playground	No
Indoor Playground	Yes
Music Room	Yes
Other Special Room(s) / Area(s)	computer room, library, information centre, activity room, gross motor room
Total No. of Principal & Teaching Staff (Data as of Sept. 2022) *	10
School Website	http://www.mrswskkg.edu.hk
Quality Review : Result and Report	Meeting the prescribed standards https://www.edb.gov.hk/attachment/tc/edu-system/preprimary-kindergarten/quality-assurance-frame-work/qv/qv-report/YL_TKDA_MrsWongSiuKeung.pdf

No. & Qualification of Principal & Teaching Staff (Data as of Sept. 2022) *	
Academic Qualification	
Degree holders	6
Non-degree holders	4
Professional Qualification	
C(ECE) or above	9
Qualified KG teachers	1
Other teacher trainings	0
Qualified assistant KG teachers	0
Others	0

* Excluding staff serving aged 0-2

Teacher to Pupil Ratio (Data as of Sept. 2022)	
Teacher to pupil ratio in morning session	1 : 8.8
Teacher to pupil ratio in afternoon session	1 : 6.4
Ratio includes classes aged 2-3	No

No. of Enrolment (Data as of Sept. 2022)				
	Nursery	Lower KG	Upper KG	Total
AM Session	6	6	12	24
PM Session	0	0	0	0
WD Session	14	24	26	64

Annual Fees (2023 / 24 School Year)				
		Nursery	Lower KG	Upper KG
Annual Fees After Deduction of Government Subsidy (No. of Instalment)	AM Session	Free	Free	Free
	PM Session	Free	Free	Free
	WD Session	\$480 (10)	\$480 (10)	\$480 (10)

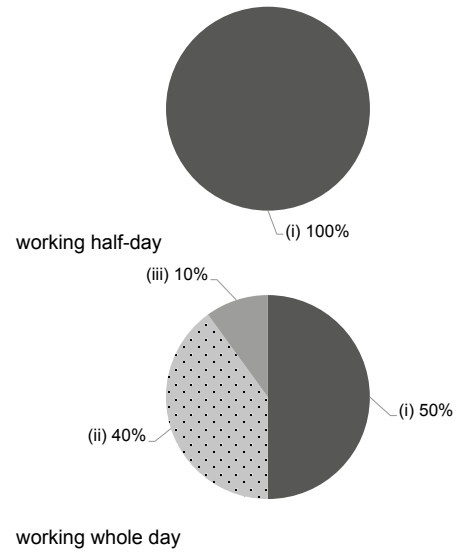
Please refer to the Fees Certificate for details of fees information.

Child Care Services (Data as of Sept. 2022)			
With child care services for children aged 2-3	-	With child care services for children aged under 2	-
Fee level (per annum)	(half - day)	No. of enrolment aged 2-3	0
	(full - day)	Joining Child Care Centre Subsidy Scheme	-
Providing occasional child care services	-	Providing extended hours services	-

Curriculum Details	
Curriculum type : Local	
Curriculum planning	
<p>We pursue activity-based teaching through a curriculum based on children's abilities and interests. Meanwhile, we focus on development of bi-literacy and tri-lingualism and provide multimedia teaching.</p> <p>We will follow the "Kindergarten Education Curriculum Guide" (2017) to plan curriculum. Children of nursery classes will not be asked to write, and there will not be mechanical copying exercises and drills on calculation.</p>	
Learning / Teaching approach & activities	
<p>We provide a high-quality enjoyable environment and set different subjects through an activity-based approach, so that children can be taught to explore from these subjects, communicate openly, strive to create new works and face up their responsibilities, guided to learn by discovering and doing. e.g. role-play, simulated supermarket play, Visit to Road Safety Town, outdoors studies and visits etc.</p>	
Assessment of children's learning experiences	
<p>Through various themes, we continuously observe and record children's development and learning progress, assess their academic performance. Moreover, we distribute their personal assessment regularly.</p>	

Monthly salary range of principal & teaching staff (Data as of Mar. 2023)

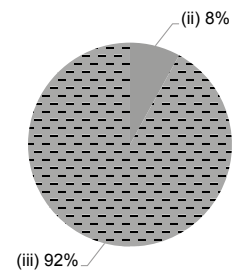
- (i) ≤ \$30,000
- (ii) \$30,001 - \$40,000
- (iii) > \$40,000



School Characteristics	
School vision and mission	
<p>The school is committed to children's balanced development in moral, intellectual, physical, social and aesthetic aspects in a happy environment. Besides, we develop in children basic manners and positive values through high quality whole-person education in which they attain appropriate development in physical, cognitive, social, and emotional aspects.</p>	
Support to students	
<p>K1 Adaption Period, seminars, Primary school activities, picnic, visits, contests, and uniformed groups, P1 Adaption Classes, and community visits to strengthen children's civic and moral cultivation. Besides, English interesting classes to develop children's bi-literacy and tri-lingualism.</p>	
Support to non-Chinese speaking (NCS) students	
<p>Received Grant for Support to NCS Students; appoint additional teaching staff / teaching assistants to support NCS students learning Chinese; create an inclusive learning environment to facilitate students' integration; In order to enhance the Chinese language of Non-Chinese students, our school conduct the Chinese lessons with them regularly. The teacher read the story books and does the dialogic reading with them. Moreover, teacher revises the vocabularies with the NCS through the interesting games so as to facilitate the Chinese language ability of NCS.</p>	
Support to students with special needs	
<p>Joining the On-site Pre-school Rehabilitation Services. Provide referral services</p>	
Link with parents	
<p>Parent-teacher association : No</p>	
Other activities / communication with parents	
<p>We regularly organize Parents Day, Home Visits and Telephone Interviews etc. Moreover, we hold a variety of Parents seminars, Class observation. Storytelling, Gymnastics, Puppet Show and Parent-Child Activities etc. We set up a Parent Volunteer Team and publish school newsletters regularly.</p>	

Working experience of principal & teaching staff in pre-primary education (Data as of Mar. 2023)

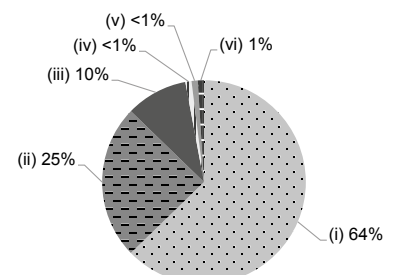
- (i) < 4 years
- (ii) 4 - 7 years
- (iii) > 7 years



2021/22 School Expenditure Information

Expenditure information based on audited account Yes

- (i) salary of principal & teaching staff
- (ii) non-teaching staff salary
- (iii) rent, management fees, rates & government rent
- (iv) teaching resources
- (v) staff training & professional development
- (vi) other expenses



Price of Major School Items (2022 / 23 School Year)			
Summer uniform	\$120-378 / set	Winter uniform	\$83-935 / set
School bag	\$140 / each	Tea and snacks	\$140-1,400 / year
Textbooks	\$59-237 / year	Exercise books/ workbooks	\$30-365 / year
Stationery	\$98-320 / year	Bedding items	No such item