



# TAI PO METHODIST KINDERGARTEN

Tai Po

Address : G/F, HENG TSUI HOUSE, FU HENG ESTATE, TAI PO,  
NEW TERRITORIES

Joining  
2023/24 KG Education Scheme

School No. 158895

Location No. 0001

Tel. : 2660 7536

Fax. : 2660 7234

School Information	
School Category	Non-profit-making
Student Category	Co-educational
Name of School Supervisor	MR NG TAT MING
Name of School Principal	MS TSUI CHUNG YEE
School Founding Year	1991
Total No. of Permitted Accommodation of Classrooms in Use (Data as of Sept. 2022)	268
Number of Registered Classrooms	8
Outdoor Playground	No
Indoor Playground	Yes
Music Room	Yes
Other Special Room(s) / Area(s)	Parent Reading Corner, Parent-child Teaching Aids World, Library, Free Play Platform, Parent Resource Room
Total No. of Principal & Teaching Staff (Data as of Sept. 2022) *	20
School Website	<a href="http://www.tpmk.edu.hk">http://www.tpmk.edu.hk</a>
Quality Review : Result and Report	Meeting the prescribed standards <a href="https://www.edb.gov.hk/attachment/en/edu-system/preprimary-kindergarten/quality-assurance-frame-work/qr/qr-report/TaiPo_Methodist.pdf">https://www.edb.gov.hk/attachment/en/edu-system/preprimary-kindergarten/quality-assurance-frame-work/qr/qr-report/TaiPo_Methodist.pdf</a>

No. & Qualification of Principal & Teaching Staff (Data as of Sept. 2022) *	
Academic Qualification	
Degree holders	10
Non-degree holders	10
Professional Qualification	
C(ECE) or above	20
Qualified KG teachers	0
Other teacher trainings	0
Qualified assistant KG teachers	0
Others	0

\* Excluding staff serving aged 0-2

Teacher to Pupil Ratio (Data as of Sept. 2022)	
Teacher to pupil ratio in morning session	1 : 11.2
Teacher to pupil ratio in afternoon session	1 : 7.1
Ratio includes classes aged 2-3	No

No. of Enrolment (Data as of Sept. 2022)				
	Nursery	Lower KG	Upper KG	Total
AM Session	48	33	62	143
PM Session	0	19	0	19
WD Session	28	27	25	80

Annual Fees (2023 / 24 School Year)				
		Nursery	Lower KG	Upper KG
Annual Fees After Deduction of Government Subsidy (No. of Instalment)	AM Session	Free	Free	Free
	PM Session	Free	Free	Free
	WD Session	\$3,685 (11)	\$3,685 (11)	\$3,685 (11)

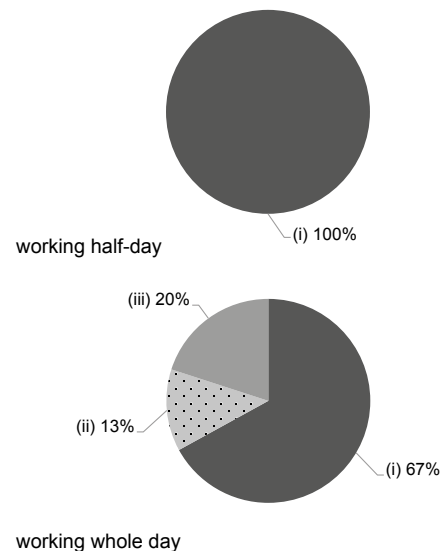
Please refer to the Fees Certificate for details of fees information.

Child Care Services (Data as of Sept. 2022)			
With child care services for children aged 2-3	-	With child care services for children aged under 2	-
Fee level (per annum)	(half - day)	No. of enrolment aged 2-3	0
	(full - day)	Joining Child Care Centre Subsidy Scheme	-
Providing occasional child care services	-	Providing extended hours services	-

Curriculum Details	
Curriculum type : Local	
Curriculum planning	
<p>We arrange the curriculum according to children's physical and mental development and carry out teaching based on children's learning interest to help children learn to explore, think and solve problems.</p> <p>We will follow the "Kindergarten Education Curriculum Guide" (2017) to plan curriculum. Children of nursery classes will not be asked to write, and there will not be mechanical copying exercises and drills on calculation.</p>	
Learning / Teaching approach & activities	
<p>Based on different themes, we adopt activity teaching, group teaching, promoted positive education, play-based / story-telling learning and teaching to encourage children to ask questions, explore and experience.</p>	
Assessment of children's learning experiences	
<p>We prepare "Study &amp; Growth Portfolio" based on on-going observation and record of children's developments, supplemented with on-going records of each child's learning photos and art works and assessment on operation of subject-related teaching aids.</p>	

Monthly salary range of principal & teaching staff  
(Data as of Mar. 2023)

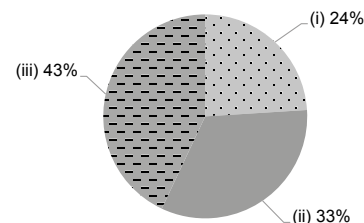
- (i) ≤ \$30,000
- (ii) \$30,001 - \$40,000
- (iii) > \$40,000



School Characteristics	
School vision and mission	
<p>We develop holistic education in line with Christianity and help students live an abundant life by spreading the Gospel.</p>	
Support to students	
<p>P.1 mock curricula, Parents' talk for progressing to P.1, Supports for students &amp; families. There are also various visiting activities, Open Day, Happy Bee, Parent-child Sports Day.</p>	
Support to non-Chinese speaking (NCS) students	
<p>Received Grant for Support to NCS Students; arrange interpretation / translation services; engage NCS parent volunteers to enhance communication between school and parents; create an inclusive learning environment to facilitate students' integration; facilitate professional development for teachers to develop effective strategies to help NCS students learn Chinese; participate in school-based professional support programmes organised by EDB.</p>	
Support to students with special needs	
<p>Joining the On-site Pre-school Rehabilitation Services. Social worker services</p>	
Link with parents	
<p>Parent-teacher association : No</p>	
Other activities / communication with parents	
<p>Parent Lecture, Parent Day, Parent-child Class Observation, Parent-child School Picnic, Parent-child Sports Day, Parent Volunteer Team, Parent Class, K1 Class 100 days Celebration, Parent School Visit before school starts, Singing for Xmas coming, Parent-child Lunar Year Fun Day</p>	

Working experience of principal & teaching staff in pre-primary education  
(Data as of Mar. 2023)

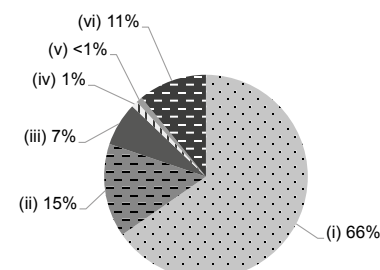
- (i) < 4 years
- (ii) 4 - 7 years
- (iii) > 7 years



2021/22 School Expenditure Information

Expenditure information based on audited account Yes

- (i) salary of principal & teaching staff
- (ii) non-teaching staff salary
- (iii) rent, management fees, rates & government rent
- (iv) teaching resources
- (v) staff training & professional development
- (vi) other expenses



Price of Major School Items (2022 / 23 School Year)			
Summer uniform	\$275 / set	Winter uniform	\$407 / set
School bag	\$75 / each	Tea and snacks	No such item
Textbooks	\$403 / year	Exercise books/ workbooks	\$158 / year
Stationery	\$140 / year	Bedding items	\$63 / set