



TIN KING ESTATE BAPTIST LUI KWOK PAT FONG KINDERGARTEN

Tuen Mun

Address : G/F, UNITS 1-10 SIU PONG COURT, TUEN MUN,
NEW TERRITORIES

Tel. : 2455 7187

Fax. : 2455 9647

Joining
2023/24 KG Education Scheme

School No. 158747

Location No. 0001

School Information	
School Category	Non-profit-making
Student Category	Co-educational
Name of School Supervisor	MR TSANG KA SHEK
Name of School Principal	MS CHAN MANG YI VINCCI
School Founding Year	1990
Total No. of Permitted Accommodation of Classrooms in Use (Data as of Sept. 2022)	194
Number of Registered Classrooms	8
Outdoor Playground	Yes
Indoor Playground	Yes
Music Room	Yes
Other Special Room(s) / Area(s)	Hall
Total No. of Principal & Teaching Staff (Data as of Sept. 2022) *	14
School Website	http://www.tkkg.edu.hk
Quality Review : Result and Report	Meeting the prescribed standards https://www.edb.gov.hk/attachment/tc/edu-system/primary-kindergarten/quality-assurance-frame-work/qv/qv-report/TKEB_LuiKwokPatFong.pdf

No. & Qualification of Principal & Teaching Staff (Data as of Sept. 2022) *	
Academic Qualification	
Degree holders	9
Non-degree holders	5
Professional Qualification	
C(ECE) or above	14
Qualified KG teachers	0
Other teacher trainings	0
Qualified assistant KG teachers	0
Others	0

* Excluding staff serving aged 0-2

Teacher to Pupil Ratio (Data as of Sept. 2022)	
Teacher to pupil ratio in morning session	1 : 10.9
Teacher to pupil ratio in afternoon session	1 : 8.4
Ratio includes classes aged 2-3	No

No. of Enrolment (Data as of Sept. 2022)				
	Nursery	Lower KG	Upper KG	Total
AM Session	17	16	19	52
PM Session	0	0	0	0
WD Session	31	43	27	101

Annual Fees (2023 / 24 School Year)				
		Nursery	Lower KG	Upper KG
Annual Fees After Deduction of Government Subsidy (No. of Instalment)	AM Session	Free	Free	Free
	PM Session	-	-	-
	WD Session	\$10,670 (11)	\$10,670 (11)	\$10,670 (11)

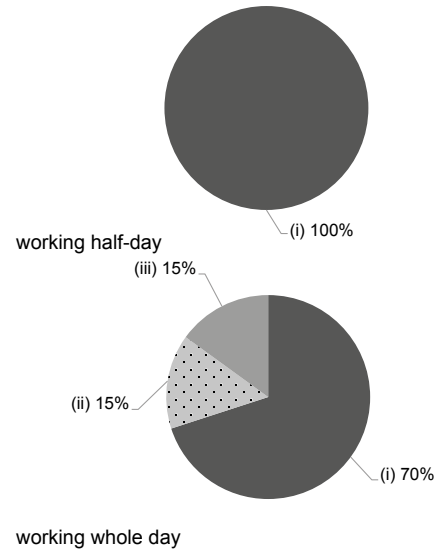
Please refer to the Fees Certificate for details of fees information.

Child Care Services (Data as of Sept. 2022)			
With child care services for children aged 2-3	-	With child care services for children aged under 2	-
Fee level (per annum)	(half - day)	No. of enrolment aged 2-3	0
	(full - day)	Joining Child Care Centre Subsidy Scheme	-
Providing occasional child care services	-	Providing extended hours services	-

Curriculum Details	
Curriculum type : Local	
Curriculum planning	
<p>Child centered curriculum caters to the development characteristics and needs of children of varying ages. The school offers Native-speaking English teachers and students interact in a small groups activities, let student to have more opportunities to apply foreign language. In line with the love of Christ, we put in great care and love into each activity and life experience to enable our children to attain balanced development in moral, intellectual, physical, social, aesthetic and spiritual aspects.</p> <p>We will follow the "Kindergarten Education Curriculum Guide" (2017) to plan curriculum. Children of nursery classes will not be asked to write, and there will not be mechanical copying exercises and drills on calculation.</p>	
Learning / Teaching approach & activities	
<p>Children construct and consolidate knowledge through observation, games, free exploration and hand-on experiences.</p>	
Assessment of children's learning experiences	
<p>Records of children's learning achievements are kept of through continuous observations, and teaching review is carried out accordingly so that the assessment results are more in line with children' actual development, which can effectively help teachers and parents in assisting children in their development.</p>	

Monthly salary range of principal & teaching staff
(Data as of Mar. 2023)

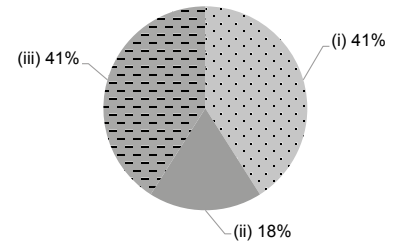
- (i) ≤ \$30,000
- (ii) \$30,001 - \$40,000
- (iii) > \$40,000



School Characteristics	
School vision and mission	
<p>We aspire to stimulate children's potentials and develop the ability of lifelong learning through quality child education services.</p>	
Support to students	
<p>The school will hold Orientation Classes for new students and their parents in every term. Regular assessment sheets for parents to understand their children's learning in school. Graduation Camp will be held every year, throughout various team-building activities, students learn how to cooperate and respect others. Besides, the school partners with community agencies to open extra-curriculum classes to broaden children's horizons so that they acquire new knowledge and skills concretely.</p>	
Support to non-Chinese speaking (NCS) students	
<p>Received Grant for Support to NCS Students; appoint additional teaching staff / teaching assistants to support NCS students learning Chinese; engage NCS parent volunteers to enhance communication between school and parents; collaborate with non-governmental organisations (NGOs) to create an inclusive learning environment; facilitate professional development for teachers to develop effective strategies to help NCS students learn Chinese.</p>	
Support to students with special needs	
<p>Joining the On-site Pre-school Rehabilitation Services. Joining the Pilot Scheme on Social Work Service for Pre-Primary Institutions</p>	
Link with parents	
Parent-teacher association : Yes	
Other activities / communication with parents	
<p>Our Parent-Teacher Association will hold regular seminars and workshops to give parents an opportunity to get more parenting knowledge. The school throughout regular Home Visit activities to know more about the lives of students and their parents, and to strengthen the communication between each other, and thus realize the purpose of parent-school cooperative parenting.</p>	

Working experience of principal & teaching staff in pre-primary education
(Data as of Mar. 2023)

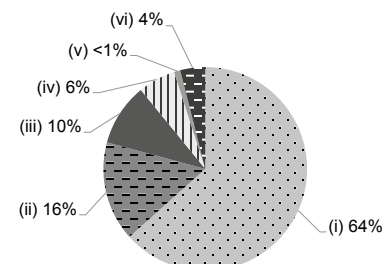
- (i) < 4 years
- (ii) 4 - 7 years
- (iii) > 7 years



2021/22 School Expenditure Information

Expenditure information based on audited account Yes

- (i) salary of principal & teaching staff
- (ii) non-teaching staff salary
- (iii) rent, management fees, rates & government rent
- (iv) teaching resources
- (v) staff training & professional development
- (vi) other expenses



Price of Major School Items (2022 / 23 School Year)			
Summer uniform	\$476 / set	Winter uniform	\$537 / set
School bag	\$130 / each	Tea and snacks	\$1,160 / year
Textbooks	\$788-829 / year	Exercise books/workbooks	\$390-487 / year
Stationery	\$80-120 / year	Bedding items	No such item