



HHCKLA BUDDHIST WAI KWONG KINDERGARTEN

North

Address : G/F, LAI MING HOUSE, WAH MING ESTATE, FANLING,
NEW TERRITORIES

Joining
2023/24 KG Education Scheme

School No. 158720

Location No. 0001

Tel. : 2677 0813

Fax. : 2669 3834

School Information	
School Category	Non-profit-making
Student Category	Co-educational
Name of School Supervisor	VEN SIK KU TAY
Name of School Principal	MS TSANG NGAR SZE
School Founding Year	1990
Total No. of Permitted Accommodation of Classrooms in Use (Data as of Sept. 2022)	165
Number of Registered Classrooms	8
Outdoor Playground	No
Indoor Playground	Yes
Music Room	Yes
Other Special Room(s) / Area(s)	Lego Discovery Zone, Reading Garden, Cycling area, Climbing wall
Total No. of Principal & Teaching Staff (Data as of Sept. 2022) *	12
School Website	http://www.bwkk.edu.hk
Quality Review : Result and Report	Meeting the prescribed standards https://www.edb.gov.hk/attachment/tc/edu-system/preprimary-kindergarten/quality-assurance-frame-work/qr/qr-report/HHCKLA_Buddhist_WaiKwong.pdf

No. & Qualification of Principal & Teaching Staff (Data as of Sept. 2022) *	
Academic Qualification	
Degree holders	11
Non-degree holders	1
Professional Qualification	
C(ECE) or above	12
Qualified KG teachers	0
Other teacher trainings	0
Qualified assistant KG teachers	0
Others	0

* Excluding staff serving aged 0-2

Teacher to Pupil Ratio (Data as of Sept. 2022)	
Teacher to pupil ratio in morning session	1 : 10.3
Teacher to pupil ratio in afternoon session	1 : 9.2
Ratio includes classes aged 2-3	No

No. of Enrolment (Data as of Sept. 2022)				
	Nursery	Lower KG	Upper KG	Total
AM Session	6	10	7	23
PM Session	0	0	0	0
WD Session	32	35	34	101

Annual Fees (2023 / 24 School Year)				
		Nursery	Lower KG	Upper KG
Annual Fees After Deduction of Government Subsidy (No. of Instalment)	AM Session	Free	Free	Free
	PM Session	Free	Free	Free
	WD Session	Free	Free	Free

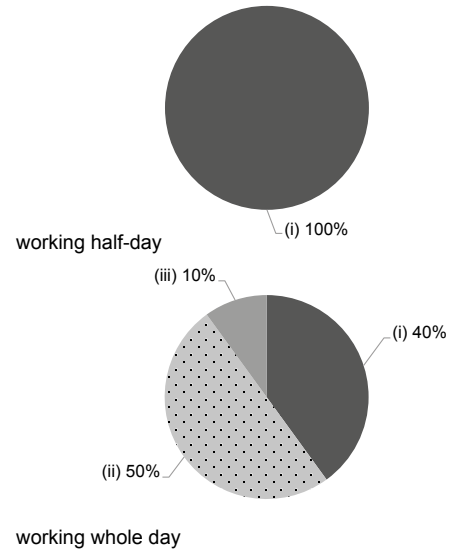
Please refer to the Fees Certificate for details of fees information.

Child Care Services (Data as of Sept. 2022)			
With child care services for children aged 2-3	-	With child care services for children aged under 2	-
Fee level (per annum)	(half - day)	No. of enrolment aged 2-3	0
	(full - day)	Joining Child Care Centre Subsidy Scheme	-
Providing occasional child care services	-	Providing extended hours services	-

Curriculum Details	
Curriculum type : Local	
Curriculum planning	
<p>The child-centred curriculum is formulated based on the "Kindergarten Education Curriculum Guide" (2017) and corresponds to the needs of children in development, abilities, interests and life experiences. Children are guided to attain 'holistic development' in an enjoyable and inspiring environment.</p> <p>We will follow the "Kindergarten Education Curriculum Guide" (2017) to plan curriculum. Children of nursery classes will not be asked to write, and there will not be mechanical copying exercises and drills on calculation.</p>	
Learning / Teaching approach & activities	
<p>Our school uses real-life themes and adopts a 'Learning through play' approach to provide all-round learning experiences. Various common abilities and self-directed learning attitude are fostered through exploration, operations and trials in a rich learning environment.</p>	
Assessment of children's learning experiences	
<p>A child's learning outcomes are comprehensively assessed based on ongoing observations and records, progressive assessments, self-assessments of children and feedback from parents.</p>	

Monthly salary range of principal & teaching staff (Data as of Mar. 2023)

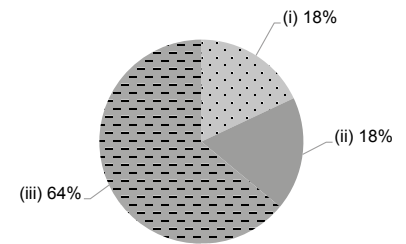
- (i) ≤ \$30,000
- (ii) \$30,001 - \$40,000
- (iii) > \$40,000



School Characteristics	
School vision and mission	
<p>We provide education based on the Buddhist spirit of benevolence for mankind. We foster morality (root of righteousness) and promote the spirit of 'love to learn, skillful to communicate, ready to undertake responsibilities and eager to innovate'.</p>	
Support to students	
<p>New students adaptation period; primary one adaptation week; cooperation with community organizations, different types of parenting workshops; referral to health center services for special needs and provide special training to the children with special needs.</p>	
Support to non-Chinese speaking (NCS) students	
<p>Arrange interpretation / translation services; facilitate professional development for teachers to develop effective strategies to help NCS students learn Chinese.</p>	
Support to students with special needs	
<p>Joining the On-site Pre-school Rehabilitation Services.</p>	
Link with parents	
<p>Parent-teacher association : Yes</p>	
Other activities / communication with parents	
<p>Various parent-child activities, seminars and workshops for parents, meetings with parents of new students, parents' day (interviews with individual parents), parent volunteer team.</p>	

Working experience of principal & teaching staff in pre-primary education (Data as of Mar. 2023)

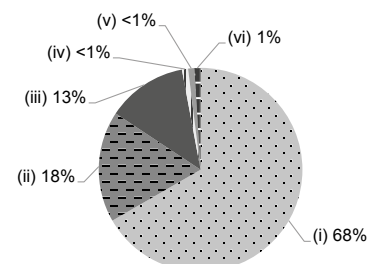
- (i) < 4 years
- (ii) 4 - 7 years
- (iii) > 7 years



2021/22 School Expenditure Information

Expenditure information based on audited account Yes

- (i) salary of principal & teaching staff
- (ii) non-teaching staff salary
- (iii) rent, management fees, rates & government rent
- (iv) teaching resources
- (v) staff training & professional development
- (vi) other expenses



Price of Major School Items (2022 / 23 School Year)

Summer uniform	\$476 / set	Winter uniform	\$642 / set
School bag	\$120 / each	Tea and snacks	\$840 / year
Textbooks	\$1,384 / year	Exercise books/ workbooks	\$691 / year
Stationery	\$441 / year	Bedding items	No such item