



TUNG WAH GROUP OF HOSPITALS TSUI TSIN TONG KINDERGARTEN

North

Address : G/F, BLOCK 6, TIN HEE HOUSE, TIN PING ESTATE,
SHEUNG SHUI, NEW TERRITORIES

Joining
2023/24 KG Education Scheme

School No. 158534

Location No. 0001

Tel. : 2671 3399

Fax. : 2679 5248

School Information	
School Category	Non-profit-making
Student Category	Co-educational
Name of School Supervisor	MR WAI HO MAN HERMAN
Name of School Principal	MS MOK CHUN LAN
School Founding Year	1989
Total No. of Permitted Accommodation of Classrooms in Use (Data as of Sept. 2022)	287
Number of Registered Classrooms	6
Outdoor Playground	No
Indoor Playground	Yes
Music Room	Yes
Other Special Room(s) / Area(s)	Children's Rock Climbing Area, Computer Room, Children's Library, Activity Room, Play Area, Assembly Hall
Total No. of Principal & Teaching Staff (Data as of Sept. 2022) *	19
School Website	http://www.twghttkg.edu.hk
Quality Review : Result and Report	Meeting the prescribed standards https://www.edb.gov.hk/attachment/en/edu-system/preprimary-kindergarten/quality-assurance-frame-work/qr/qr-report/TWGH_TsuiTsinTong.pdf

No. & Qualification of Principal & Teaching Staff (Data as of Sept. 2022) *	
Academic Qualification	
Degree holders	14
Non-degree holders	5
Professional Qualification	
C(ECE) or above	19
Qualified KG teachers	0
Other teacher trainings	0
Qualified assistant KG teachers	0
Others	0

* Excluding staff serving aged 0-2

Teacher to Pupil Ratio (Data as of Sept. 2022)	
Teacher to pupil ratio in morning session	1 : 10.1
Teacher to pupil ratio in afternoon session	1 : 7.4
Ratio includes classes aged 2-3	No

No. of Enrolment (Data as of Sept. 2022)				
	Nursery	Lower KG	Upper KG	Total
AM Session	47	48	48	143
PM Session	32	29	32	93
WD Session	16	16	16	48

Annual Fees (2023 / 24 School Year)				
		Nursery	Lower KG	Upper KG
Annual Fees After Deduction of Government Subsidy (No. of Instalment)	AM Session	Free	Free	Free
	PM Session	Free	Free	Free
	WD Session	\$11,850 (10)	\$11,850 (10)	\$11,850 (10)

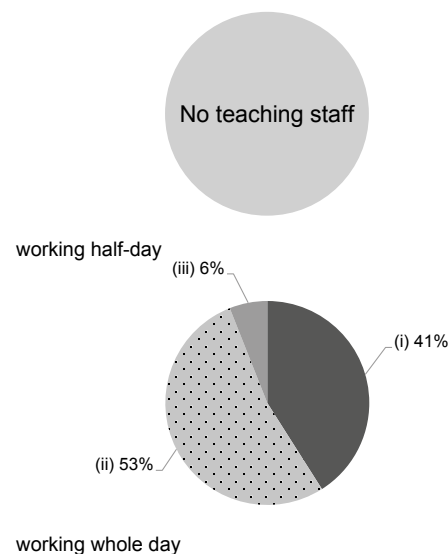
Please refer to the Fees Certificate for details of fees information.

Child Care Services (Data as of Sept. 2022)			
With child care services for children aged 2-3	-	With child care services for children aged under 2	-
Fee level (per annum)	(half - day)	No. of enrolment aged 2-3	0
	(full - day)	Joining Child Care Centre Subsidy Scheme	-
Providing occasional child care services	-	Providing extended hours services	-

Curriculum Details	
Curriculum type : Local	
Curriculum planning	
<p>Our child-centred curriculum takes into consideration children's' learning interests and promotes development of multiple intelligences. Art and drama elements are integrated into the curriculum to nurture children's' creativity. Children learn biliteracy and trilingualism through relaxing and fun activities, and we also use free play to improve their knowledge through games. On-the-spot first-hand experience broadens children's horizons and enriches their life experience, which helps them build a high-quality cultural foundation.</p> <p>We will follow the "Kindergarten Education Curriculum Guide" (2017) to plan curriculum. Children of nursery classes will not be asked to write, and there will not be mechanical copying exercises and drills on calculation.</p>	
Learning / Teaching approach & activities	
<p>Integrated teaching approaches, such as illustration-based approach and creative arts are adopted. Children's aptitude is enhanced through outdoor observations, visits, and personal experiences This allows children to develop good character, learn more knowledge, and improve self-care ability from a variety of activities. Coupled with excellent teachers, children can grow up healthily and happily, and smoothly enter primary school.</p>	
Assessment of children's learning experiences	
<p>Children's performance in learning is assessed by ongoing observations and a profile of each child's learning journey is created to record his/her development.</p>	

Monthly salary range of principal & teaching staff
(Data as of Mar. 2023)

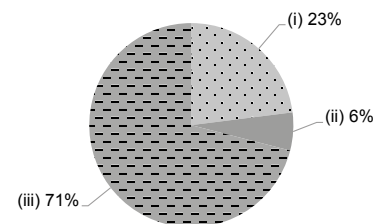
- (i) ≤ \$30,000
- (ii) \$30,001 - \$40,000
- (iii) > \$40,000



School Characteristics	
School vision and mission	
<p>We aim to provide quality pre-primary educational services. 'Holistic Education' allows young children to learn in an enjoyable way, ignites their potential, and ensures balanced development in linguistic, social, emotional, physical and artistic aspects.</p>	
Support to students	
<p>Orientation day is arranged for new students; transition from Kindergarten to Primary 1 activities are arranged for K3 students; a variety of scholarship funding are also provided to all students to develop their full potential.</p>	
Support to non-Chinese speaking (NCS) students	
<p>Arrange interpretation / translation services for non-Chinese speaking (NCS) students; create an enriched language environment for mastery of the Chinese language; create an inclusive learning environment to facilitate students' integration.</p>	
Support to students with special needs	
<p>Joining the On-site Pre-school Rehabilitation Services. Our teachers have received relevant training and have experience in caring for children with special learning needs. In addition, our teachers are very caring and patient, so students continue to improve.</p>	
Link with parents	
Parent-teacher association : Yes	
Other activities / communication with parents	
<p>Parent-teacher meetings before the start of the school year; class observation week; parents' conferences; parents' day, parent-child activities; seminars for parents jointly organized with schools under the Tung Wah Group of Hospitals and parents' collaboration programmes for strengthening the home-school partnership. There are also parent education training classes to continuously enhance the positive energy of parents, promote the parent-child relationship, and establish a healthy and harmonious family life.</p>	

Working experience of principal & teaching staff in pre-primary education
(Data as of Mar. 2023)

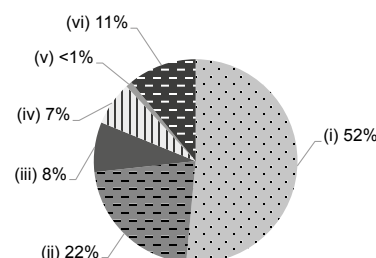
- (i) < 4 years
- (ii) 4 - 7 years
- (iii) > 7 years



2021/22 School Expenditure Information

Expenditure information based on audited account Yes

- (i) salary of principal & teaching staff
- (ii) non-teaching staff salary
- (iii) rent, management fees, rates & government rent
- (iv) teaching resources
- (v) staff training & professional development
- (vi) other expenses



Price of Major School Items (2022 / 23 School Year)

Summer uniform	\$78-98 / set	Winter uniform	\$226-270 / set
School bag	\$80 / each	Tea and snacks	\$600 / year
Textbooks	No such item	Exercise books/ workbooks	\$700 / year
Stationery	No such item	Bedding items	No such item