



# TSUEN WAN BAPTIST CHURCH KINDERGARTEN

Tsuen Wan

Address : G/F & 1/F, 99 CASTLE PEAK ROAD, TSUEN WAN,  
NEW TERRITORIES

Tel. : 2413 3819

Fax. : 2419 0808

Joining  
2023/24 KG Education Scheme

School No. 158496

Location No. 0001

School Information	
School Category	Non-profit-making
Student Category	Co-educational
Name of School Supervisor	MS HO LAI FONG
Name of School Principal	MS SO SAU FAN REBECCA
School Founding Year	1989
Total No. of Permitted Accommodation of Classrooms in Use (Data as of Sept. 2022)	324
Number of Registered Classrooms	6
Outdoor Playground	No
Indoor Playground	Yes
Music Room	Yes
Other Special Room(s) / Area(s)	Activity room, auditorium and multi-purpose hall deputy
Total No. of Principal & Teaching Staff (Data as of Sept. 2022) *	17
School Website	<a href="http://www.tsuenwanbckg.edu.hk">http://www.tsuenwanbckg.edu.hk</a>
Quality Review : Result and Report	Meeting the prescribed standards <a href="https://www.edb.gov.hk/attachment/en/edu-system/primary-kindergarten/quality-assurance-frame-work/qr/qr-report/TWBC.pdf">https://www.edb.gov.hk/attachment/en/edu-system/primary-kindergarten/quality-assurance-frame-work/qr/qr-report/TWBC.pdf</a>

No. & Qualification of Principal & Teaching Staff (Data as of Sept. 2022) *	
Academic Qualification	
Degree holders	13
Non-degree holders	4
Professional Qualification	
C(ECE) or above	16
Qualified KG teachers	0
Other teacher trainings	0
Qualified assistant KG teachers	0
Others	1

\* Excluding staff serving aged 0-2

Teacher to Pupil Ratio (Data as of Sept. 2022)	
Teacher to pupil ratio in morning session	1 : 9.5
Teacher to pupil ratio in afternoon session	1 : 9.2
Ratio includes classes aged 2-3	No

No. of Enrolment (Data as of Sept. 2022)				
	Nursery	Lower KG	Upper KG	Total
AM Session	54	54	54	162
PM Session	54	52	50	156
WD Session	0	0	0	0

Annual Fees (2023 / 24 School Year)				
		Nursery	Lower KG	Upper KG
Annual Fees After Deduction of Government Subsidy (No. of Instalment)	AM Session	Free	Free	Free
	PM Session	Free	Free	Free
	WD Session	-	-	-

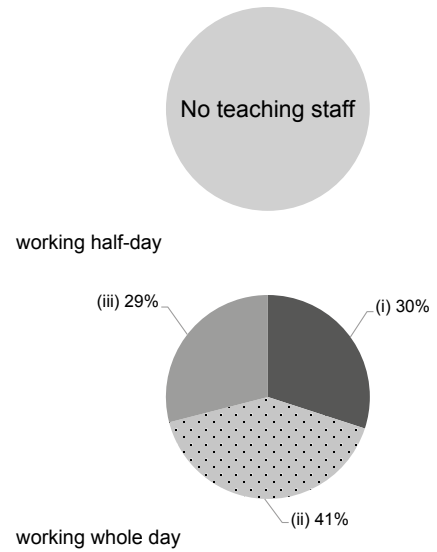
Please refer to the Fees Certificate for details of fees information.

Child Care Services (Data as of Sept. 2022)			
With child care services for children aged 2-3	-	With child care services for children aged under 2	-
Fee level (per annum)	(half - day)	No. of enrolment aged 2-3	0
	(full - day)	Joining Child Care Centre Subsidy Scheme	-
Providing occasional child care services	-	Providing extended hours services	-

Curriculum Details	
Curriculum type : Local	
Curriculum planning	
<p>Practicing Christian education concept, we provide children with rich learning experience according to children's development, interests and needs to promote children's moral, intellectual, physical, social, aesthetic and spiritual development. We leverage book reciting and reading programmes to enhance children's reading interest and language ability. Moreover, we provide project-based learning to stimulate children's learning interest and improve their thinking ability. What's more, we arrange three-year school-based curriculum of moral education to help children form a good character.</p>	
<p>We will follow the "Kindergarten Education Curriculum Guide" (2017) to plan curriculum. Children of nursery classes will not be asked to write, and there will not be mechanical copying exercises and drills on calculation.</p>	
Learning / Teaching approach & activities	
<p>Activity teaching, small-class teaching, group learning, project-based learning and specialised teaching. We leverage sharing, science, free exploration and mixed age activities to strengthen a child's self-confidence, encourage exploration and improve interpersonal relationships.</p>	
Assessment of children's learning experiences	
<p>We record children's academic performances based on on-going observation and collect their work papers, drawings and photos to record their learning and growing process.</p>	

Monthly salary range of principal & teaching staff (Data as of Mar. 2023)

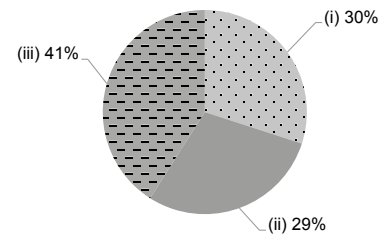
- (i) ≤ \$30,000
- (ii) \$30,001 - \$40,000
- (iii) > \$40,000



School Characteristics	
School vision and mission	
<p>Our school motto: Train a child in the way he should go, and when he is old, he will not turn from it. (Proverbs 22:6) Our mission: Educate a new generation featuring flexible thinking, perseverance and rich emotion with Christian love and care.</p>	
Support to students	
<p>Home visits, new students adaption period, curriculum for transition to P.1 and cooperation with community agencies.</p>	
Support to non-Chinese speaking (NCS) students	
<p>Create an inclusive learning environment to facilitate students' integration.</p>	
Support to students with special needs	
<p>Joining the On-site Pre-school Rehabilitation Services. On-site Pre-school Rehabilitation Service &amp; School Social Work Service</p>	
Link with parents	
<p>Parent-teacher association : Yes</p>	
Other activities / communication with parents	
<p>Before enrollment, we hold a school briefing session to let the parents know our goals and curricula. Seminar on P.1 school selection, parents day, parent-child activity day, parent-child trip, parenting courses, parent evangelical service, parent group and parent-teacher association.</p>	

Working experience of principal & teaching staff in pre-primary education (Data as of Mar. 2023)

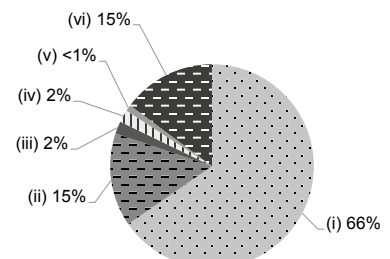
- (i) < 4 years
- (ii) 4 - 7 years
- (iii) > 7 years



2021/22 School Expenditure Information

Expenditure information based on audited account Yes

- (i) salary of principal & teaching staff
- (ii) non-teaching staff salary
- (iii) rent, management fees, rates & government rent
- (iv) teaching resources
- (v) staff training & professional development
- (vi) other expenses



Price of Major School Items (2022 / 23 School Year)			
Summer uniform	\$247 / set	Winter uniform	\$295 / set
School bag	\$70 / each	Tea and snacks	\$900 / year
Textbooks	\$0 / year	Exercise books/ workbooks	\$0 / year
Stationery	\$0 / year	Bedding items	No such item