



**PO LEUNG KUK MRS. CHAO KING LIN  
KINDERGARTEN**

Joining  
2023/24 KG Education Scheme

Kwai Chung &  
Tsing Yi

Address : G/F, ON YUN HOUSE, CHEUNG ON ESTATE,  
TSING YI, NEW TERRITORIES

School No. 158453

Tel. : 2431 4904

Fax. : 2435 0790

Location No. 0001

School Information	
School Category	Non-profit-making
Student Category	Co-educational
Name of School Supervisor	MS TUNG HELENA CHING YEE
Name of School Principal	MS WONG LEE TING
School Founding Year	1989
Total No. of Permitted Accommodation of Classrooms in Use (Data as of Sept. 2022)	272
Number of Registered Classrooms	7
Outdoor Playground	No
Indoor Playground	Yes
Music Room	Yes
Other Special Room(s) / Area(s)	Activities Room, Library
Total No. of Principal & Teaching Staff (Data as of Sept. 2022) *	14
School Website	<a href="https://www.plkks.edu.hk/plkcklkg/">https://www.plkks.edu.hk/plkcklkg/</a>
Quality Review : Result and Report	Meeting the prescribed standards <a href="https://www.edb.gov.hk/attachment/en/edu-system/preprimary-kindergarten/quality-assurance-frame-work/qr/qr-report/PLK_MrsCKL.pdf">https://www.edb.gov.hk/attachment/en/edu-system/preprimary-kindergarten/quality-assurance-frame-work/qr/qr-report/PLK_MrsCKL.pdf</a>

No. & Qualification of Principal & Teaching Staff (Data as of Sept. 2022) *	
Academic Qualification	
Degree holders	10
Non-degree holders	4
Professional Qualification	
C(ECE) or above	14
Qualified KG teachers	0
Other teacher trainings	0
Qualified assistant KG teachers	0
Others	0

\* Excluding staff serving aged 0-2

Teacher to Pupil Ratio (Data as of Sept. 2022)	
Teacher to pupil ratio in morning session	1 : 11.6
Teacher to pupil ratio in afternoon session	1 : 6.2
Ratio includes classes aged 2-3	No

No. of Enrolment (Data as of Sept. 2022)				
	Nursery	Lower KG	Upper KG	Total
AM Session	37	32	41	110
PM Session	8	9	10	27
WD Session	15	25	13	53

Annual Fees (2023 / 24 School Year)				
		Nursery	Lower KG	Upper KG
Annual Fees After Deduction of Government Subsidy (No. of Instalment)	AM Session	Free	Free	Free
	PM Session	Free	Free	Free
	WD Session	\$8,400 (10)	\$8,400 (10)	\$8,400 (10)

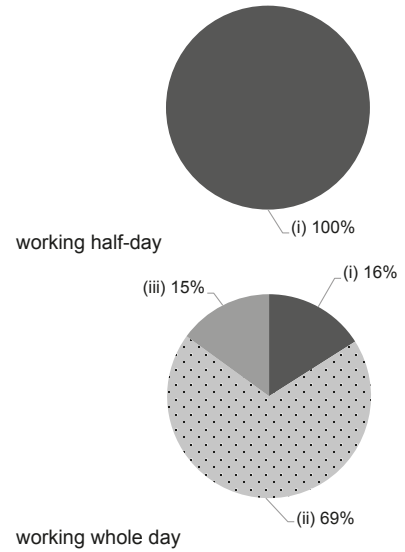
Please refer to the Fees Certificate for details of fees information.

Child Care Services (Data as of Sept. 2022)			
With child care services for children aged 2-3	-	With child care services for children aged under 2	-
Fee level (per annum)	(half - day)	No. of enrolment aged 2-3	0
	(full - day)	Joining Child Care Centre Subsidy Scheme	-
Providing occasional child care services	-	Providing extended hours services	-

Curriculum Details	
Curriculum type : Local	
Curriculum planning	
<p>1. Based on six learning areas outlined in the curriculum guide, namely Physical Fitness and Health", "Language", "Early Childhood Mathematics", "Nature and Living", "Self and Society" and "Arts and Creativity" to design multi-year programmed that cover learning elements like Values and Attitudes, Skills, Knowledge and more. 2. Real-life learning themes are closely related to children's learning experience, cognition and interests. 3. Our Curriculum emphasis on fostering children's learning interest, building positive values and attitudes and enhancing self- confidence as well as self-care abilities. 4. We provide children with integrated language learning experience based on their language ability and developmental needs.</p> <p>We will follow the "Kindergarten Education Curriculum Guide" (2017) to plan curriculum. Children of nursery classes will not be asked to write, and there will not be mechanical copying exercises and drills on calculation.</p>	
Learning / Teaching approach & activities	
<p>Inspiring and engaging games to enhance children's learning and to bolster comprehensive childhood development. 1. According to children's developmental abilities, needs and interests, we design different activities, adopt the activity approach and encourage children to interact with each other to foster children's own initiative to learn. 2. Standard Pronunciation: Facilitate childhood linguistic and phonological development through games, songs, stories and drama. Putonghua and English phonics learning are also offered. 3. Physical and Mental Growth Programme: Designed by our teachers for our students that caters for their physical and mental development. 4. Reading Culture: Stimulate children's interests in reading and verbal skills through classroom and parent-child reading.</p>	
Assessment of children's learning experiences	
<p>1. Continuously monitor, record and analyse the behaviour of children and their academic performance. 2. Collect children's works to compile a "learning portfolio" and a "healthy growth portfolio" in analysing their growth performance.</p>	

Monthly salary range of principal & teaching staff (Data as of Mar. 2023)

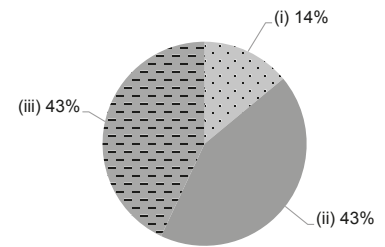
- (i) ≤ \$30,000
- (ii) \$30,001 - \$40,000
- (iii) > \$40,000



School Characteristics	
School vision and mission	
<p>We upholds PLK's motto of "Love, Respect, Diligence and Integrity", being child-centred, we aim to explore the potential in children, nurturing their spirit of self-learning, thinking, exploration, self-confidence and innovation in order to lay a good foundation for lifelong learning.</p>	
Support to students	
<p>Adaptation period for new entrants, individual intervention for children, simulation class of Primary One life, referral services, school-based social workers and sharing sessions by graduates.</p>	
Support to non-Chinese speaking (NCS) students	
<p>Received Grant for Support to NCS Students; appoint additional teaching staff / teaching assistants to support NCS students learning Chinese; arrange interpretation / translation services; engage NCS parent volunteers to enhance communication between school and parents; create an enriched language environment for mastery of the Chinese language; create an inclusive learning environment to facilitate students' integration; facilitate professional development for teachers to develop effective strategies to help NCS students learn Chinese.</p>	
Support to students with special needs	
<p>Joining the On-site Pre-school Rehabilitation Services.</p>	
Link with parents	
<p>Parent-teacher association : No</p>	
Other activities / communication with parents	
<p>Parent volunteers group, open day, parents' consultation day, school website information, questionnaires, circulars, school newsletters, parenting workshops, parent-child activities, parent-child reading, family sports day, family outings and provide assistance during class activities.</p>	

Working experience of principal & teaching staff in pre-primary education (Data as of Mar. 2023)

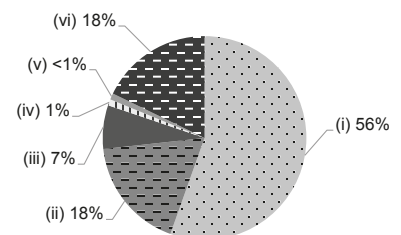
- (i) < 4 years
- (ii) 4 - 7 years
- (iii) > 7 years



2021/22 School Expenditure Information

Expenditure information based on audited account Yes

- (i) salary of principal & teaching staff
- (ii) non-teaching staff salary
- (iii) rent, management fees, rates & government rent
- (iv) teaching resources
- (v) staff training & professional development
- (vi) other expenses



Price of Major School Items (2022 / 23 School Year)			
Summer uniform	\$371-413 / set	Winter uniform	\$798-828 / set
School bag	\$57 / each	Tea and snacks	\$1,000 / year
Textbooks	\$1,242-1,358 / year	Exercise books/ workbooks	\$68-193 / year
Stationery	\$361-459 / year	Bedding items	\$0 / set