



# PRISTINE KINDERGARTEN

Yuen Long

Joining  
2023/24 KG Education Scheme

Address : BLOCKS B, C & D, 1/F, WAH KIN BUILDING, TAT FAI PATH,  
YLTL 375, YUEN LONG, NEW TERRITORIES

School No. 157732

Tel. : 2479 6867

Fax. : 3147 0445

Location No. 0001

School Information	
School Category	Non-profit-making
Student Category	Co-educational
Name of School Supervisor	MR ALE, JAGDISH KUMAR
Name of School Principal	MS CHENG KAI FUN
School Founding Year	2001
Total No. of Permitted Accommodation of Classrooms in Use (Data as of Sept. 2022)	198
Number of Registered Classrooms	3
Outdoor Playground	No
Indoor Playground	No
Music Room	Yes
Other Special Room(s) / Area(s)	No
Total No. of Principal & Teaching Staff (Data as of Sept. 2022) *	10
School Website	<a href="http://www.pristine.edu.hk">http://www.pristine.edu.hk</a>
Quality Review : Result and Report	Meeting the prescribed standards <a href="https://www.edb.gov.hk/attachment/en/edu-system/preprimary-kindergarten/quality-assurance-framework/qr/qr-report/Pristine.pdf">https://www.edb.gov.hk/attachment/en/edu-system/preprimary-kindergarten/quality-assurance-framework/qr/qr-report/Pristine.pdf</a>

No. & Qualification of Principal & Teaching Staff (Data as of Sept. 2022) *	
Academic Qualification	
Degree holders	7
Non-degree holders	3
Professional Qualification	
C(ECE) or above	10
Qualified KG teachers	0
Other teacher trainings	0
Qualified assistant KG teachers	0
Others	0

\* Excluding staff serving aged 0-2

Teacher to Pupil Ratio (Data as of Sept. 2022)	
Teacher to pupil ratio in morning session	1 : 7.2
Teacher to pupil ratio in afternoon session	1 : 6.4
Ratio includes classes aged 2-3	No

No. of Enrolment (Data as of Sept. 2022)				
	Nursery	Lower KG	Upper KG	Total
AM Session	21	22	29	72
PM Session	17	19	28	64
WD Session	0	0	0	0

Annual Fees (2023 / 24 School Year)				
		Nursery	Lower KG	Upper KG
Annual Fees After Deduction of Government Subsidy (No. of Instalment)	AM Session	Free	Free	Free
	PM Session	Free	Free	Free
	WD Session	-	-	-

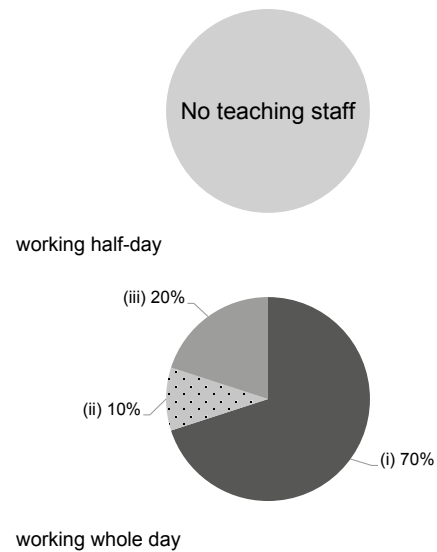
Please refer to the Fees Certificate for details of fees information.

Child Care Services (Data as of Sept. 2022)			
With child care services for children aged 2-3	-	With child care services for children aged under 2	-
Fee level (per annum)	(half - day)	No. of enrolment aged 2-3	0
	(full - day)	Joining Child Care Centre Subsidy Scheme	-
Providing occasional child care services	-	Providing extended hours services	-

Curriculum Details	
Curriculum type : Local	
Curriculum planning	
<p>Adopting a child-centred teaching approach, our school-based curriculum is designed with the targets of helping children develop self-learning skills, self-confidence, healthy self-concepts, an interest in learning, active learning attitude and good living habits, so that a balanced development in moral, intellectual, physical, communal, and artistic aspects is achieved.</p> <p>We will follow the "Kindergarten Education Curriculum Guide" (2017) to plan curriculum. Children of nursery classes will not be asked to write, and there will not be mechanical copying exercises and drills on calculation.</p>	
Learning / Teaching approach & activities	
<p>Project approach used in conjunction with theme-based teaching with group activities and hands-on learning. In-class learning will be extended / supported with workshops and site visits whenever possible.</p>	
Assessment of children's learning experiences	
<p>Children's growth is assessed through continuous observation. Parents will also be invited to input their observations on their children's growth on a regular basis.</p>	

Monthly salary range of principal & teaching staff  
(Data as of Mar. 2023)

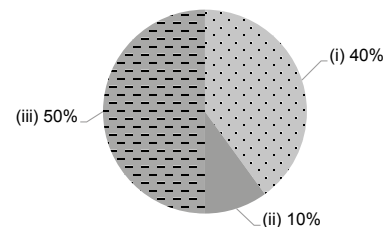
- (i) ≤ \$30,000
- (ii) \$30,001 - \$40,000
- (iii) > \$40,000



School Characteristics	
School vision and mission	
<p>We create a secure and comfortable environment where children can explore creativity freely with the well-balanced curriculum we provide. Through these various experiences, children gain great curiosity and concentration, which builds self-esteem.</p>	
Support to students	
<p>We cater for students' individual needs through extensive classroom support and collaboration with community organisations and professionals in the field. We design, adjust and fine-tune the curriculum in order to enhance the learning outcomes of non-Chinese speaking students. New students are supported with an adaptation period and cooperation with community organizations.</p>	
Support to non-Chinese speaking (NCS) students	
<p>Received Grant for Support to NCS Students; appoint additional teaching staff / teaching assistants to support NCS students learning Chinese; arrange interpretation / translation services; engage NCS parent volunteers to enhance communication between school and parents; create an enriched language environment for mastery of the Chinese language; create an inclusive learning environment to facilitate students' integration; collaborate with non-governmental organisations (NGOs) to create an inclusive learning environment; facilitate professional development for teachers to develop effective strategies to help NCS students learn Chinese.</p>	
Support to students with special needs	
<p>Joining the On-site Pre-school Rehabilitation Services. Joining the Pilot Scheme on Social Work Service for Pre-primary Institutions</p>	
Link with parents	
Parent-teacher association : Yes	
Other activities / communication with parents	
<p>Parents' Day; Orientation Day for New Parents; P.1 Admission Briefing; Parenting Workshops and Talks; PTA Meetings; Curriculum Briefing Sessions (K1, K2, &amp; K3); Facebook, and WhatsApp.</p>	

Working experience of principal & teaching staff in pre-primary education  
(Data as of Mar. 2023)

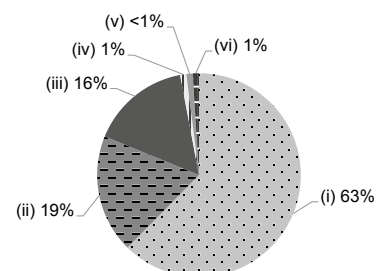
- (i) < 4 years
- (ii) 4 - 7 years
- (iii) > 7 years



2021/22 School Expenditure Information

Expenditure information based on audited account Yes

- (i) salary of principal & teaching staff
- (ii) non-teaching staff salary
- (iii) rent, management fees, rates & government rent
- (iv) teaching resources
- (v) staff training & professional development
- (vi) other expenses



Price of Major School Items (2022 / 23 School Year)			
Summer uniform	\$160 / set	Winter uniform	\$398 / set
School bag	\$127 / each	Tea and snacks	No such item
Textbooks	\$972-1,230 / year	Exercise books/ workbooks	\$62-140 / year
Stationery	\$381-396 / year	Bedding items	No such item