



TWGHS LUI FUNG FAUNG MEMORIAL KINDERGARTEN

Sha Tin

Address : G/F, SHEUNG SAM HOUSE, LUNG HANG ESTATE,
SHATIN, NEW TERRITORIES

Joining
2023/24 KG Education Scheme

School No. 157511

Location No. 0001

Tel. : 2697 9973

Fax. : 2691 1105

School Information	
School Category	Non-profit-making
Student Category	Co-educational
Name of School Supervisor	MR WAI HO MAN HERMAN
Name of School Principal	MS CHAN SAU HAN
School Founding Year	1984
Total No. of Permitted Accommodation of Classrooms in Use (Data as of Sept. 2022)	135
Number of Registered Classrooms	6
Outdoor Playground	No
Indoor Playground	Yes
Music Room	Yes
Other Special Room(s) / Area(s)	Climbing Wall, Activity Room, Free Play Zone
Total No. of Principal & Teaching Staff (Data as of Sept. 2022) *	11
School Website	http://www.twghlffkg.edu.hk
Quality Review : Result and Report	Meeting the prescribed standards https://www.edb.gov.hk/attachment/en/edu-system/primary-kindergarten/quality-assurance-frame-work/qr/qr-report/TWGH_LuiFungFaung.pdf

No. & Qualification of Principal & Teaching Staff (Data as of Sept. 2022) *	
Academic Qualification	
Degree holders	10
Non-degree holders	1
Professional Qualification	
C(ECE) or above	11
Qualified KG teachers	0
Other teacher trainings	0
Qualified assistant KG teachers	0
Others	0

* Excluding staff serving aged 0-2

Teacher to Pupil Ratio (Data as of Sept. 2022)	
Teacher to pupil ratio in morning session	1 : 9.5
Teacher to pupil ratio in afternoon session	1 : 6.3
Ratio includes classes aged 2-3	No

No. of Enrolment (Data as of Sept. 2022)				
	Nursery	Lower KG	Upper KG	Total
AM Session	7	17	18	42
PM Session	0	0	0	0
WD Session	16	18	29	63

Annual Fees (2023 / 24 School Year)				
		Nursery	Lower KG	Upper KG
Annual Fees After Deduction of Government Subsidy (No. of Instalment)	AM Session	Free	Free	Free
	PM Session	Free	Free	Free
	WD Session	\$10,800 (10)	\$10,800 (10)	\$10,800 (10)

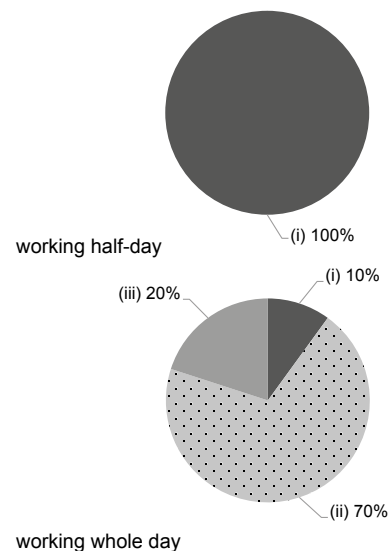
Please refer to the Fees Certificate for details of fees information.

Child Care Services (Data as of Sept. 2022)			
With child care services for children aged 2-3	-	With child care services for children aged under 2	-
Fee level (per annum)	(half - day)	No. of enrolment aged 2-3	0
	(full - day)	Joining Child Care Centre Subsidy Scheme	-
Providing occasional child care services	-	Providing extended hours services	-

Curriculum Details	
Curriculum type : Local	
Curriculum planning	
<p>The curriculum is designed to use Chinese and English story books as learning materials, and match with project learning. It covers learning of knowledge, skills and attitudes, and aims at effectively promote children's moral, intellectual, physical, social and aesthetic development. And through life education, it seeks to pursue "whole-person development".</p> <p>We will follow the "Kindergarten Education Curriculum Guide" (2017) to plan curriculum. Children of nursery classes will not be asked to write, and there will not be mechanical copying exercises and drills on calculation.</p>	
Learning / Teaching approach & activities	
<p>Our teachers teach the curriculum by strategically using different approaches, and empower children to learn during playing games. We cultivate children's abilities in exploring, thinking and communication and creating by using the project approach and arranging visits, group activities and simulation games.</p>	
Assessment of children's learning experiences	
<p>Assessment of children's learning performance through continuous and summative observations, and "Children's Learning Portfolios" used as their learning records.</p>	

Monthly salary range of principal & teaching staff (Data as of Mar. 2023)

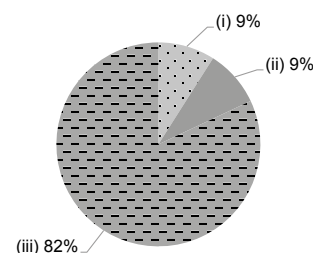
- (i) ≤ \$30,000
- (ii) \$30,001 - \$40,000
- (iii) > \$40,000



School Characteristics	
School vision and mission	
<p>1. Provide high quality early childhood education; 2. Promote parent-school partnership; 3. Enhance teachers' professional level; 4. Demonstrate Tung Wah's team spirit</p>	
Support to students	
<p>1. For new students -- Adaption Period. 2. Parents School -- to help parents understand their children and effectively deal with their behaviors and emotions, Seminars, Primary School Visits, Individual counseling. 3. P.1 Transition for Graduating Class -- Mock P.1 Adaption Period, Primary School Class Visits. 4. For existing students -- individualized teaching to take into account students' learning differences, adjusting their learning styles and actively promoting a co-fusion culture. 5. Funding for children's interest activities through grants by Tung Wah Group of Hospitals' Board of Directors. 6. Scholarships to encourage children's learning, including the Chiu-Yin Kwan Justice of the Peace Art Award Scholarships, Tung Wah Group of Hospitals Outstanding Student Award Scholarships, TWGHs Kindergartens Language Scholarship Programme, Eddie Wang Subsidies and Eddie Wang Emergency Assistance.</p>	
Support to non-Chinese speaking (NCS) students	
<p>Received Grant for Support to NCS Students; engage NCS parent volunteers to enhance communication between school and parents; create an enriched language environment for mastery of the Chinese language.</p>	
Support to students with special needs	
<p>Joining the On-site Pre-school Rehabilitation Services. "Onsite Preschool Rehabilitation Services - Sunshine Kids"</p>	
Link with parents	
<p>Parent-teacher association : Yes</p>	
Other activities / communication with parents	
<p>School Newsletters, Parents Day, Parents Seminars, School Picnics, Sports Day, Parents Class Visits, Parent Interest Classes, Parent Volunteer Team Activities and Parent-Teacher Committee</p>	

Working experience of principal & teaching staff in pre-primary education (Data as of Mar. 2023)

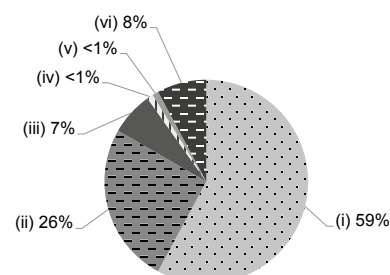
- (i) < 4 years
- (ii) 4 - 7 years
- (iii) > 7 years



2021/22 School Expenditure Information

Expenditure information based on audited account Yes

- (i) salary of principal & teaching staff
- (ii) non-teaching staff salary
- (iii) rent, management fees, rates & government rent
- (iv) teaching resources
- (v) staff training & professional development
- (vi) other expenses



Price of Major School Items (2022 / 23 School Year)

Summer uniform	\$78-98 / set	Winter uniform	\$226-270 / set
School bag	\$80 / each	Tea and snacks	\$600 / year
Textbooks	No such item	Exercise books/ workbooks	\$700 / year
Stationery	No such item	Bedding items	No such item